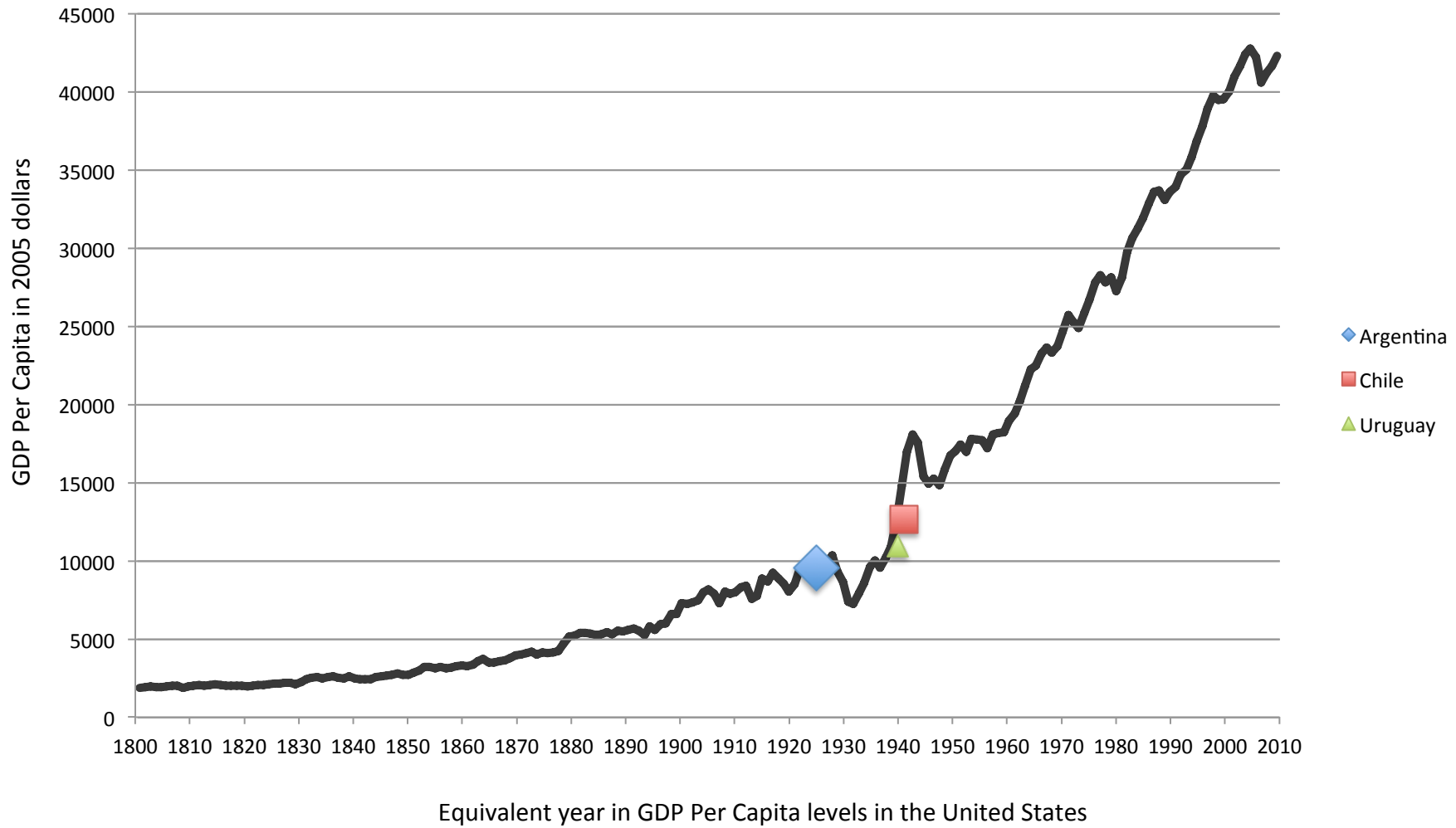


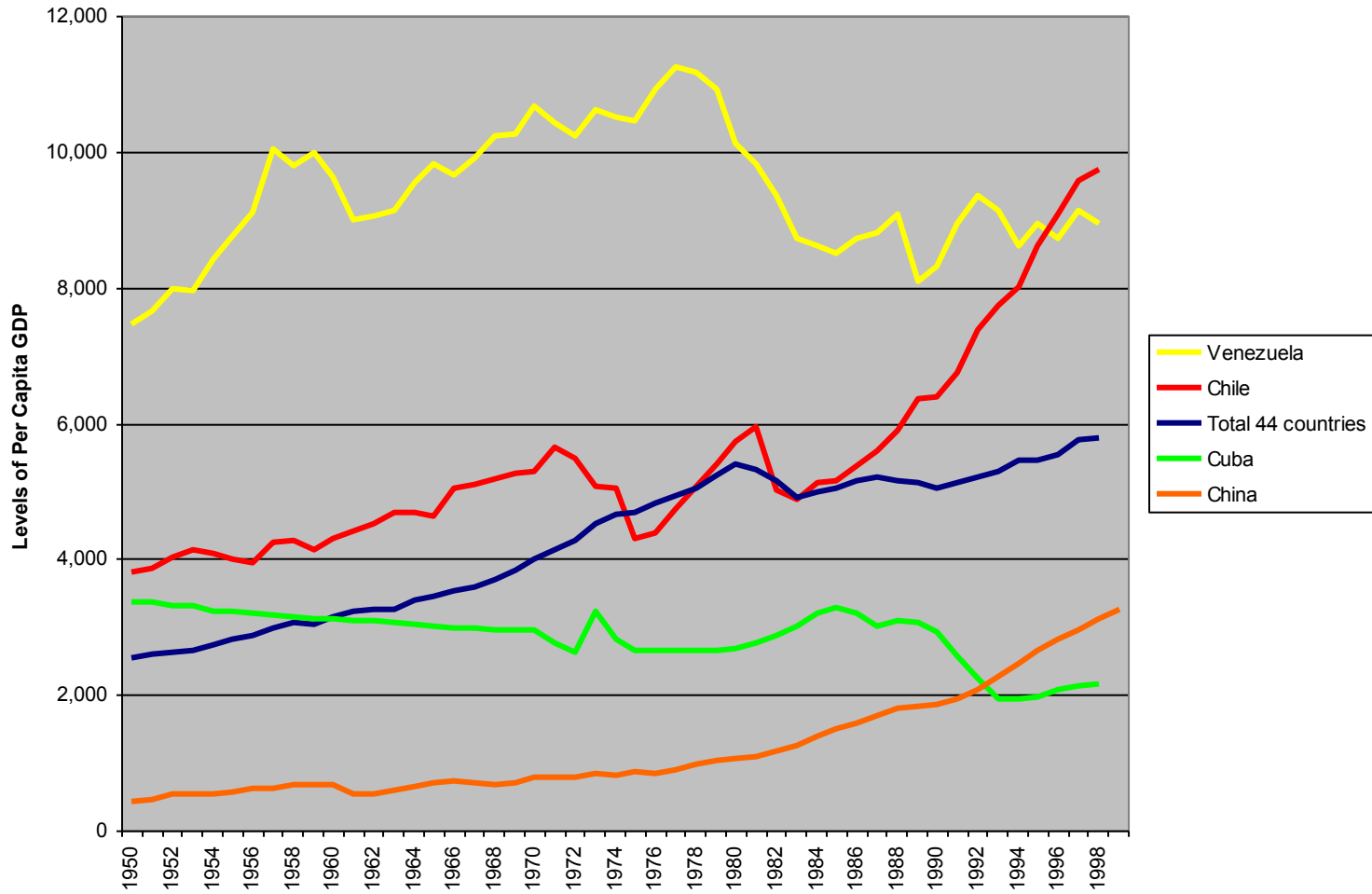
Washington, 20



2012

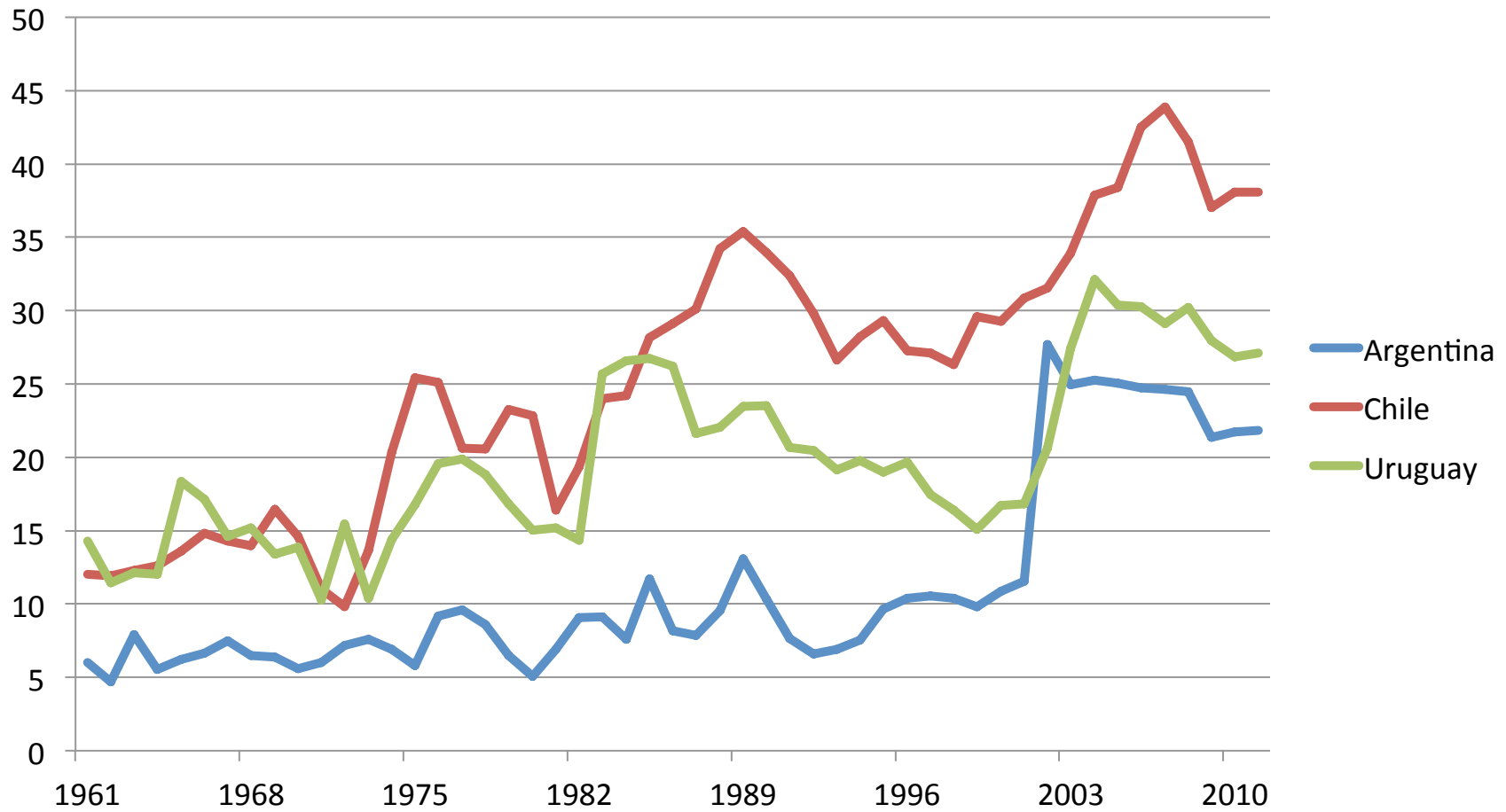


Levels of Per Capita in Countries, Annual Estimates, 1950-99



Source: Maddison, Angus. 2001. The World Economy: A Millennial Perspective. Paris: OECD.

Exports as a Percentage of GDP (since 1961)

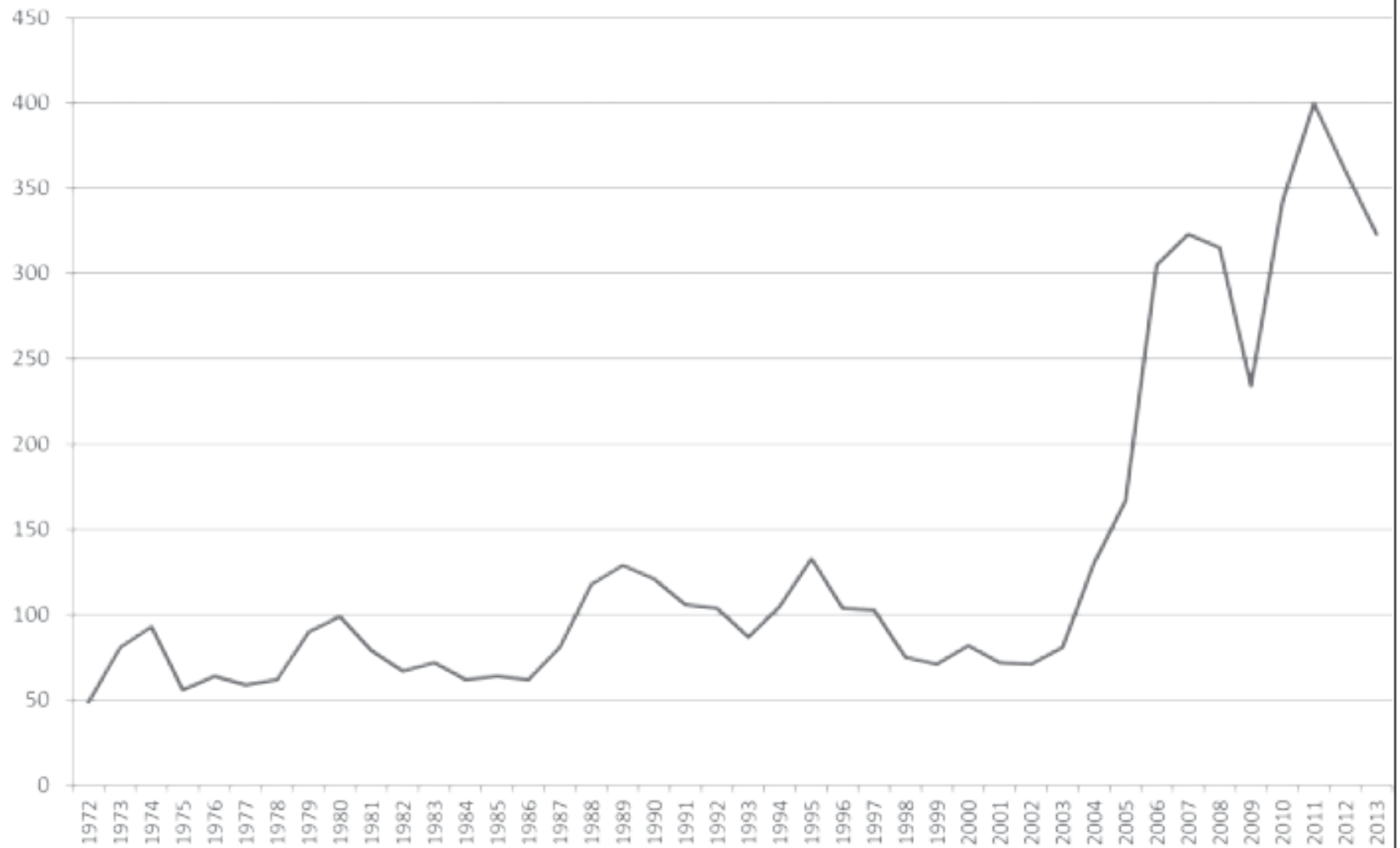


Source: World Bank

Hypothesis 1

Luck

Copper Price
Annual Average: 1972-2013 (US\$ cents/pound)

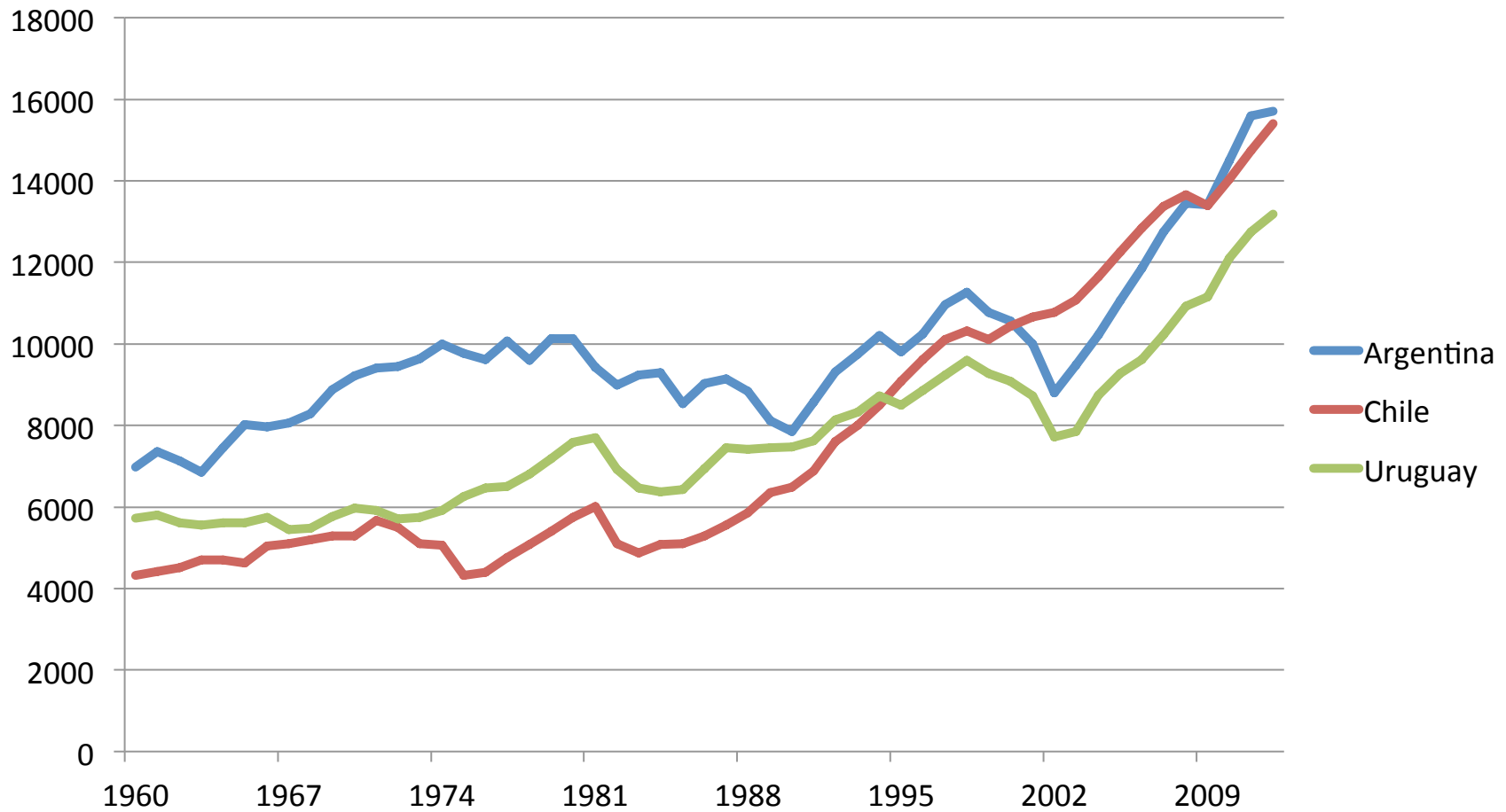


Hypothesis 2

Authoritarianism

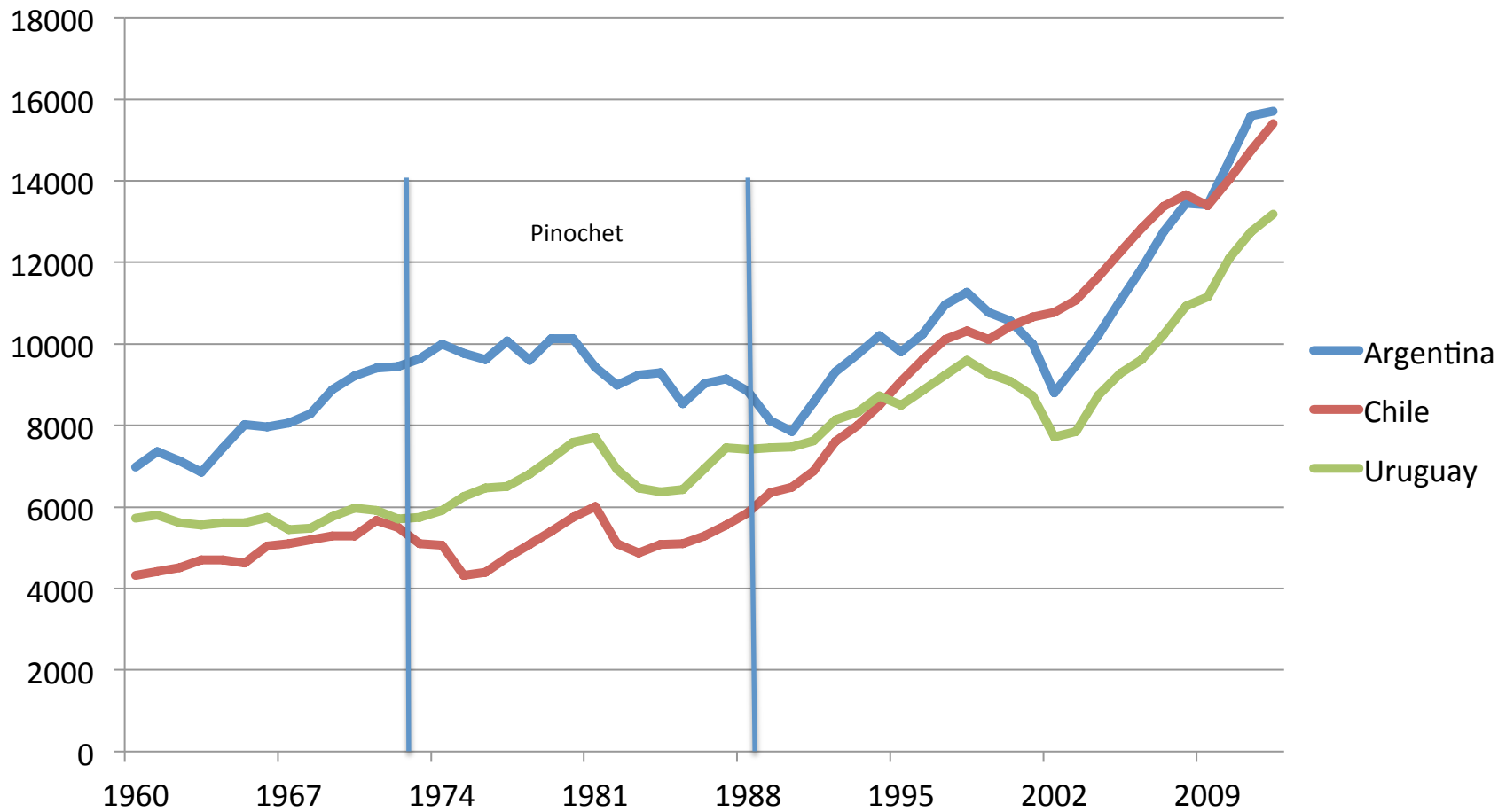
(Gen. Augusto Pinochet and Market Reforms)

GDP Per Capita (since 1960)



Source: World Bank

GDP Per Capita (since 1960)



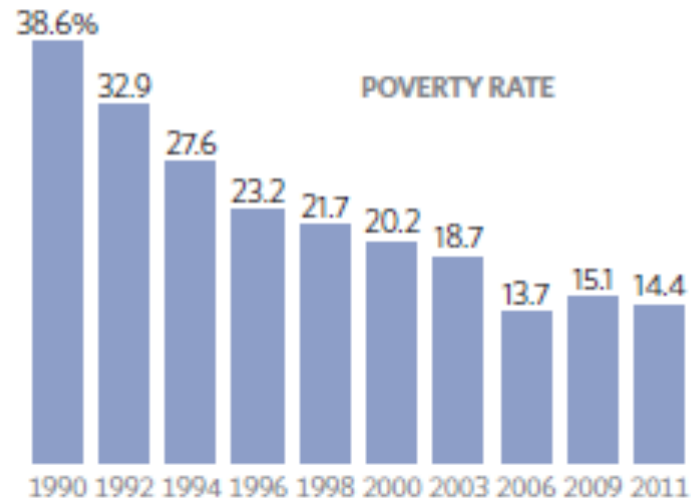
Source: World Bank

Hypothesis 3

Institutions
(Bipartisan moderation)

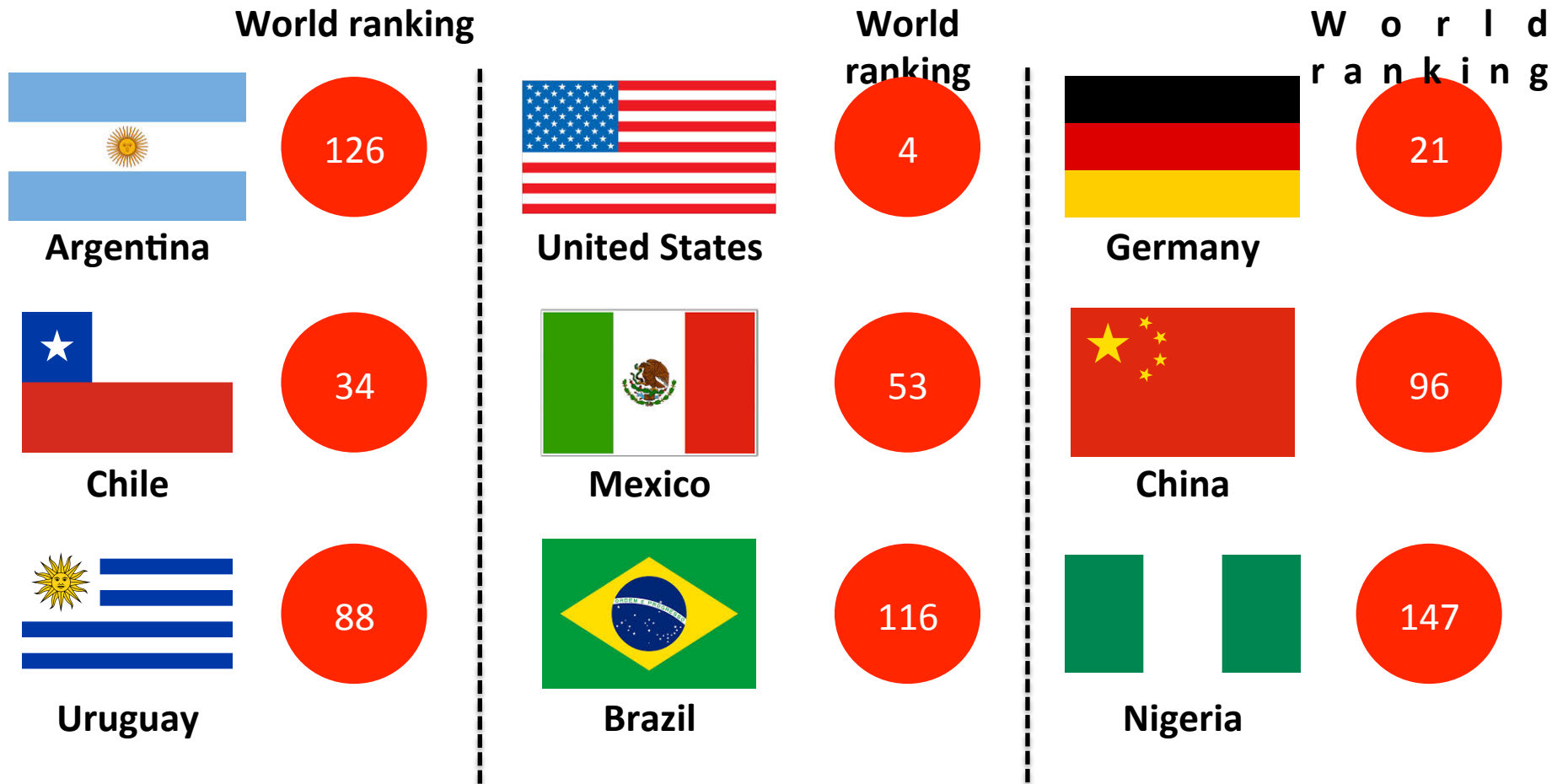
CHART 15

Poverty Rates



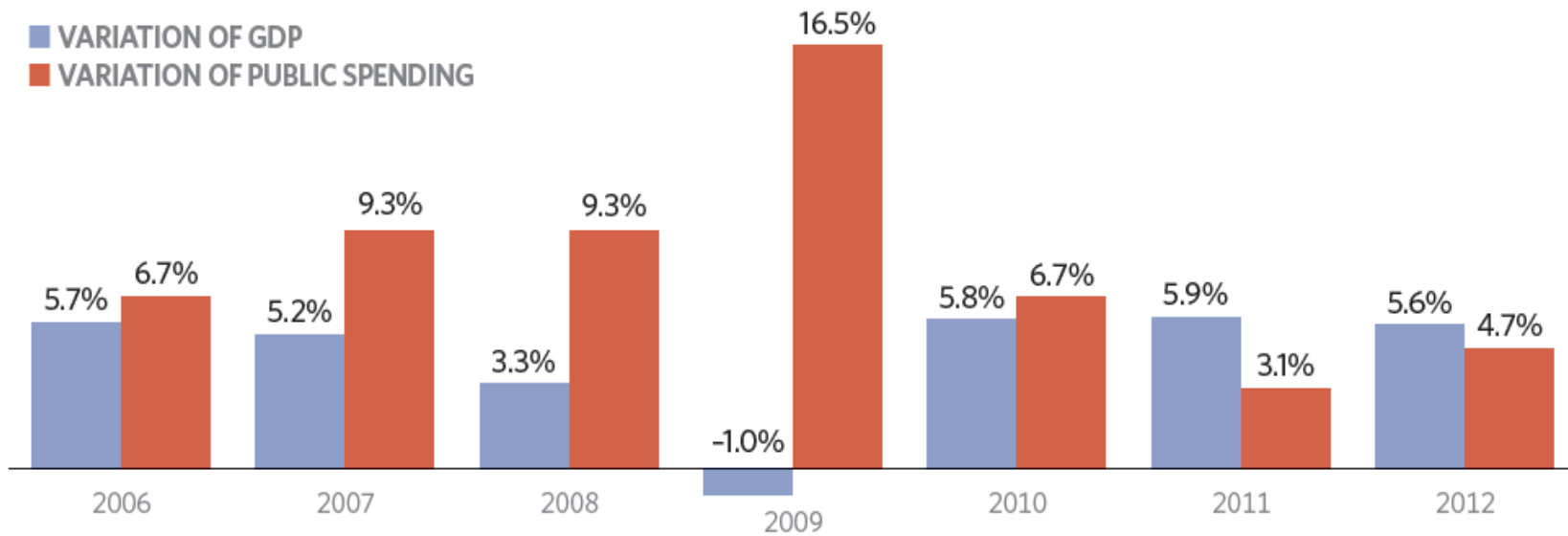
Source: CASEN Survey.

Ease of Doing Business Rankings

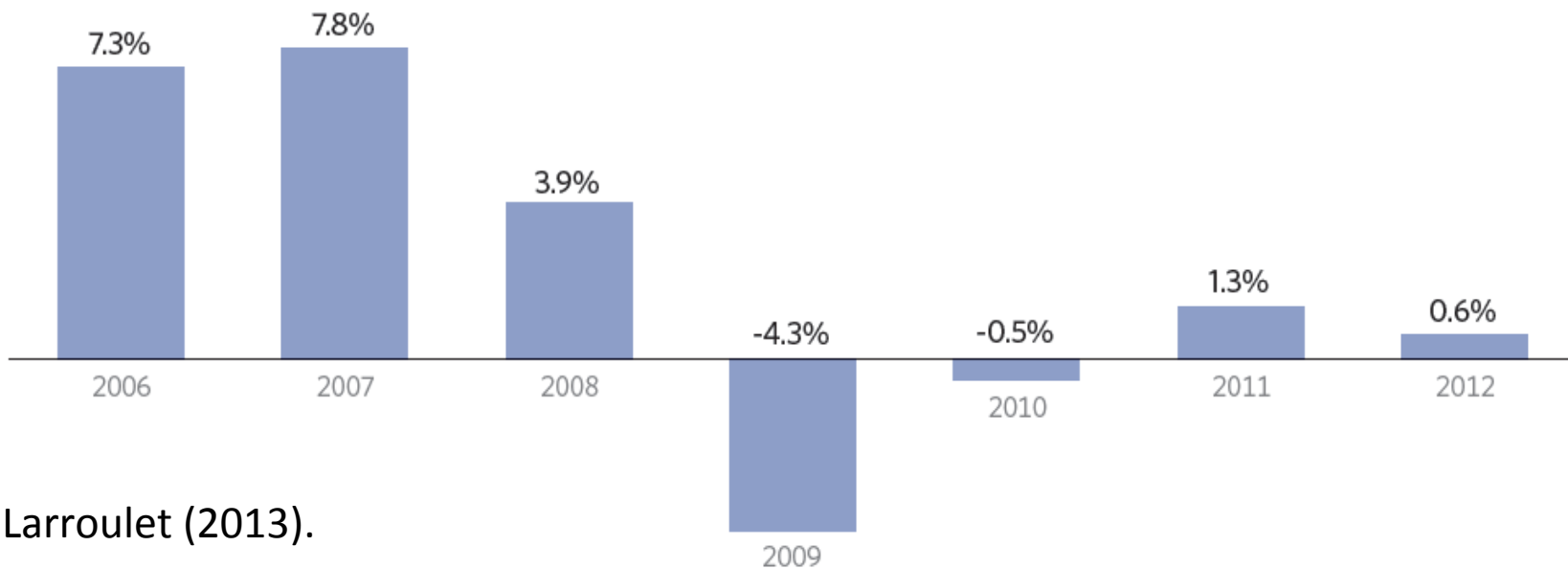


Source: World Bank, "Doing Business – Economy Rankings," <www.doingbusiness.org/rankings>

Public Spending and Government Balance



GOVERNMENT BUDGET BALANCE (% GDP)



Larroulet (2013).

The agenda for Michelet



2013:
GENERAL ELECTIONS
MAIN CONTENDERS

MICHELLE BACHELET
SOCIALIST PARTY

EVELYN MATTHEI
INDEPENDENT DEMOCRATIC
UNION



HYPOTHESIS 1:

CHILEANS HAVE LEGITIMATE SOCIAL AND ECONOMIC COMPLAINTS



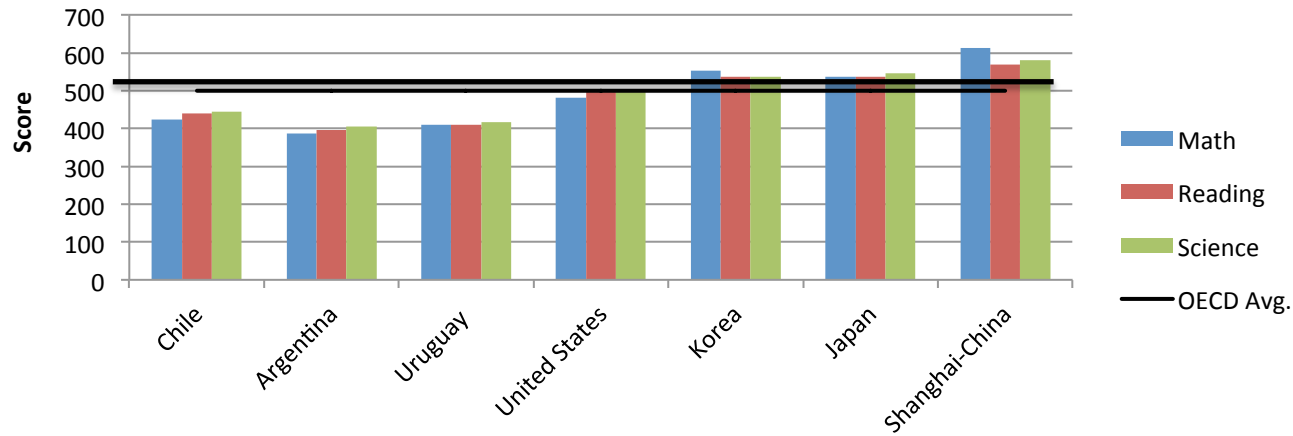
HYPOTHESIS 2:

CHILEANS HAVE NEVER BEEN BETTER OFF;
THE PROTESTORS ARE MERELY ALIGNED
WITH THE SOCIALIST PARTY-LED
OPPOSITION

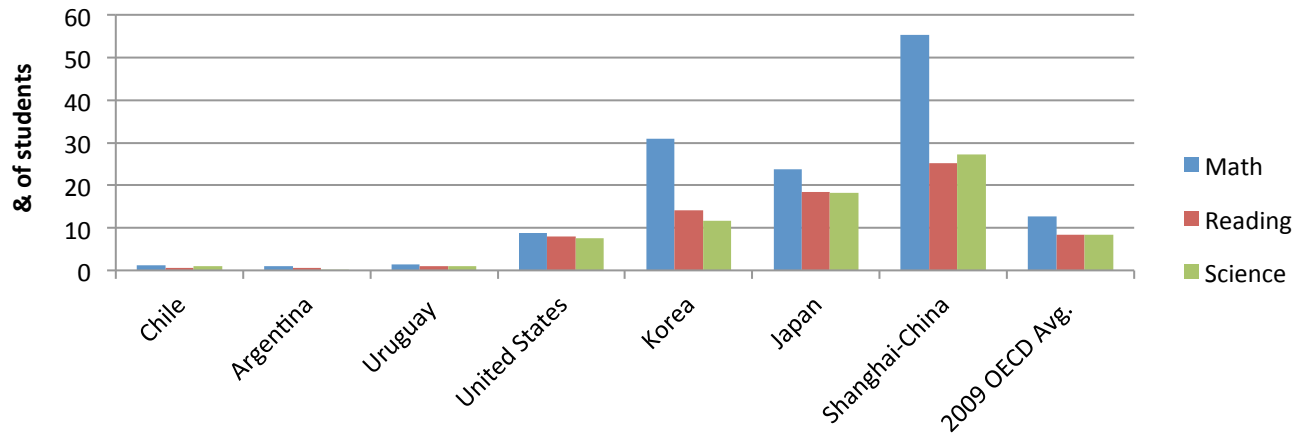
2011-PRESENT:
STUDENT PROTESTS

2012 PISA Results

Mean PISA Scores (2012)

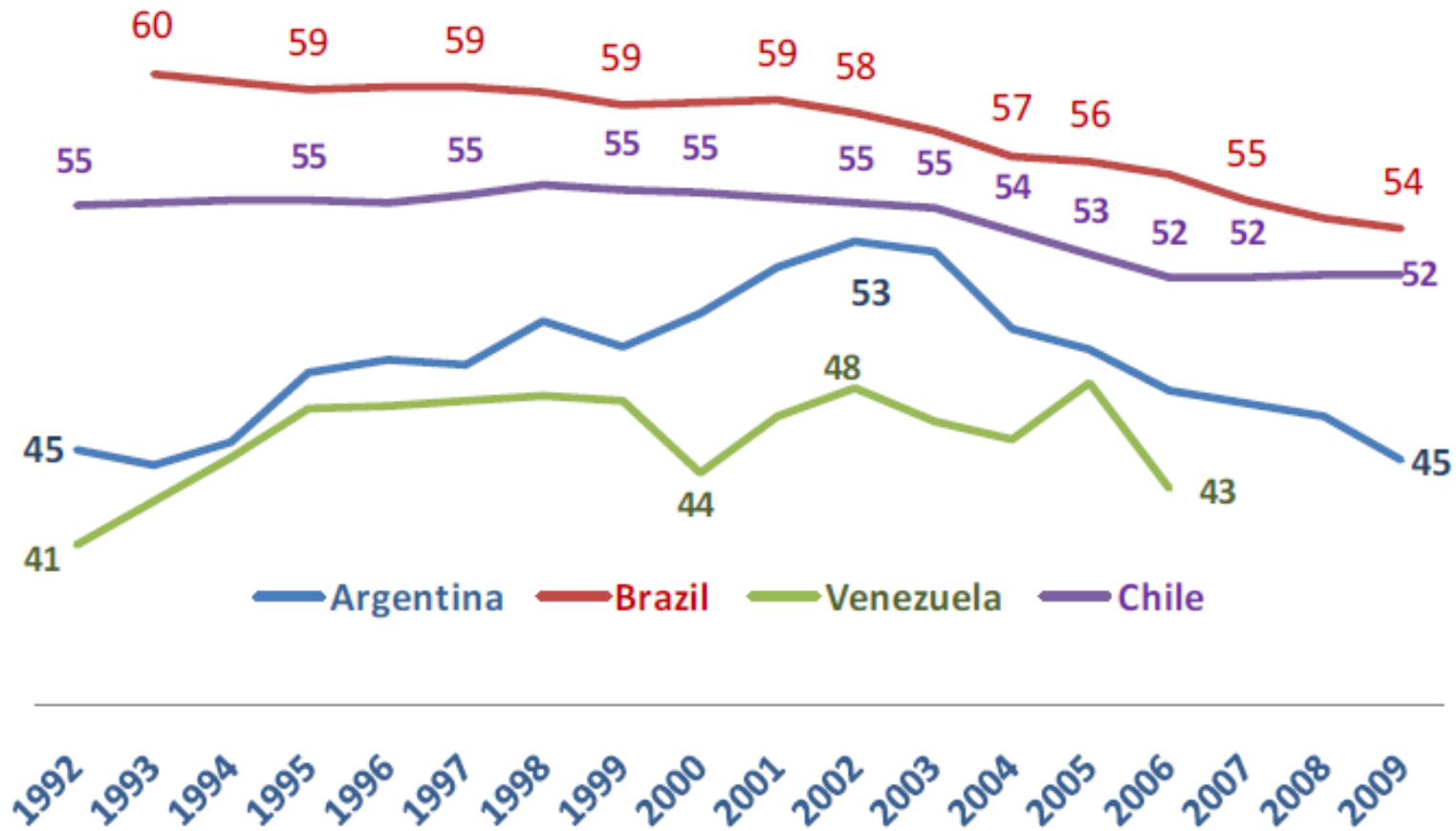


Percentage of students who scored Level 5 or above on PISA tests (2012)



Source: OECD

Figure 5: Inequality in Argentina, Brazil, Chile, and Venezuela (Gini coefficients, rounded)



Source: SEDLAC (CEDLAS and the World Bank) as downloaded December 2010.

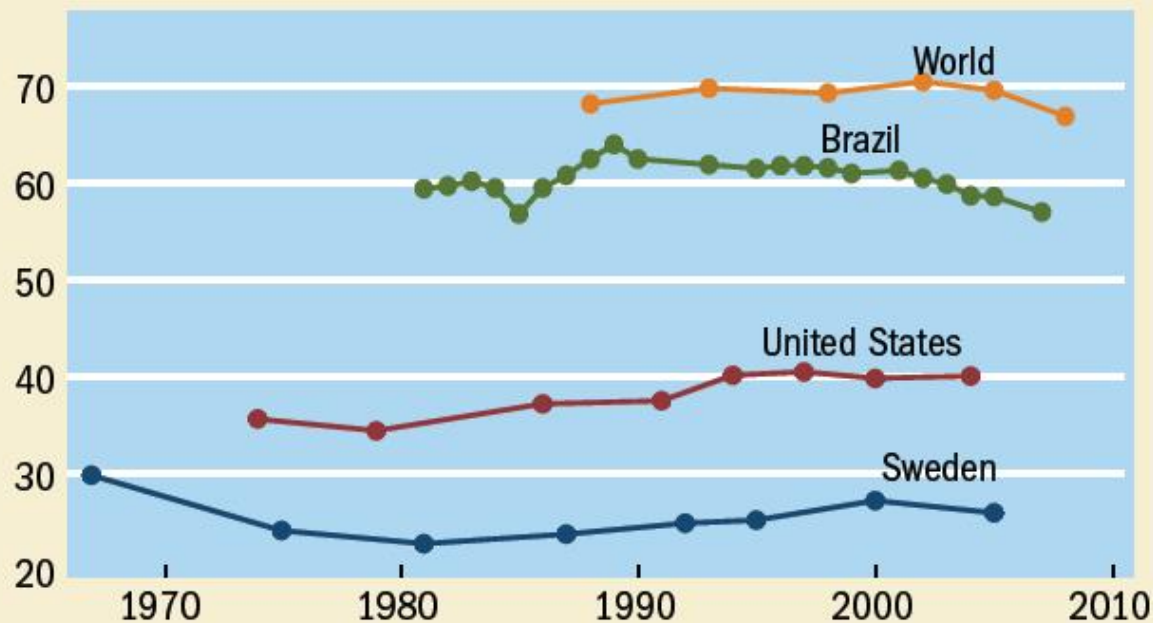
Source: McLeod and Lustig (2010).

Chart 1

Worldwide gaps

Global inequality—between world citizens—is higher than inequality within even the most unequal individual countries.

(Gini coefficient)



Sources: For United States and Sweden, Luxembourg Income Survey database; for Brazil, Socio-Economic Database for Latin America and the Caribbean (SEDLAC); for the world, Milanovic (forthcoming). The 2008 world Gini is a preliminary estimate.

Note: Gini based on disposable income.