

# Bright Horizons™ 6



Expand your skills. Chat with the experts. Join our community of kindred spirits on this exotic journey.

Our Speakers on Bright Horizons 6 are:

Jim Bell, Ph.D., David D. Blackwell, Ph.D., Guion S. Bluford, Jr., Ph.D., Noah Isakov, Ph.D., and Lawrence Krauss, Ph.D.

## Pricing & Booking Information

(Full details:

[http://www.InSightCruises.com/booking\\_d/sa06\\_booking.html](http://www.InSightCruises.com/booking_d/sa06_booking.html))

**Course Fees:** \$1,375. Only passengers booked through InSight Cruises will be admitted. The fee includes all 90-minute seminars below plus two private "open bar" InSight Cruises parties.

**Deposit:** \$600 per person.

Cabin Type:	Cruise Rate (per person)
Better Inside	\$799
Better Outside	\$899
Verandah	\$1,199+
Superior Suite	\$1,799
Full Suite	\$2,999

## Program

### The Space Shuttle Program

Speaker: **Guion S. Bluford, Jr., Ph.D.**

Countdown to contemporary treasure — a first-hand account of life in space. Dr. Guion Bluford, a veteran of four Space Transportation System (STS) missions (STS 8, STS 61-A, STS 39, and STS 53) will present a look at the Space Shuttle Program, from its inception to the wrap up of its service in 2010. Learn about training for shuttle duty, noteworthy aspects of daily routine in space on the Discovery and Challenger, and gain a behind the scenes look at the science and technology projects executed by Shuttle astronauts.

### The International Space Station

Speaker: **Guion S. Bluford, Jr., Ph.D.**

Join Dr. Bluford for a comprehensive survey of the International Space Station (ISS) Program. He will orient us to the history and complexities of this permanent human presence in space. From project inception to launch to ongoing development and daily living, pick up a new understanding of the logistics, function, and significance of the ISS.

The pricing above is subject to change. InSight Cruises will generally match the cruise pricing advertised, at the time of booking, offered at the Holland America website. If at the time of booking the cruise line notifies us that the price of cruise fare has *increased*, you will be notified of the new pricing before your reservation is booked.

**Physically Challenged:** The ship has a very limited number of specially equipped cabins for the Physically Challenged. Please let us know your specific needs.

**Sharing:** For those wishing to share a cabin with another passenger in our group in an inside, outside, or outside w/ verandah cabin only. The prices are the same as the per person double occupancy rates.

**3rd Person Rate:** ages 2 and older: \$550; under 2 years old: \$450.

**Single Occupancy:**

If you would like to be the sole occupant of a cabin, there is a single-occupancy upcharge: 100% for balcony cabins; 50% for non-balcony cabins.

**Port Charges, Taxes, and Gratuities:**

Port charges and taxes are \$76.71 per person and are in addition to the cruise pricing (these fees are subject to minor change). Holland America also charges, onboard, approximately \$11 per person per day for gratuities.

**The Future of the Space Program**

Speaker: **Guion S. Bluford, Jr., Ph.D.**

Travel back to the future with an indepth discussion on the future of the NASA Space Program. Dr. Bluford will address the issues and opportunities ahead as space exploration matures. You'll get the big picture of the Constellation Program (with its Aries, Orion, and Altair components) which will return humans to the moon and later take them to Mars. Come away with the insights and views on what lies ahead from Dr. Bluford, astronaut and aeronautical engineer.

**An Evening with Shuttle Astronaut Dr. Guion Bluford**

How has aeronautics affected society and vice versa? Having worked in space, what open questions does Dr. Bluford have about space exploration, and space? What are the core characteristics and qualities shared by astronauts i.e., what is "the right stuff"? Dr. Bluford will present food for thought arising from his experience in space (688 hours), in jet cockpits (5,200 hours), and in the field of aeronautical engineering. We'll have an out-of-this-world round of astronaut Q&A, too!

**Postcards from Mars**

Speaker: **Jim Bell, Ph.D.**

The NASA Mars Exploration Rovers Spirit and Opportunity landed on the Red Planet in January 2004, and have been driving, photographing, and analyzing their landing sites for the past five years. Prof. Bell has been the lead scientist in charge of the rovers' Panoramic Camera imaging system since the rovers were launched nearly a decade ago. Come along for an amazing journey of geologic exploration and learn about the ways that both rovers have been utilized to discover convincing evidence that Mars was once warmer, wetter, and much more Earthlike than it is today.

**Impact!**

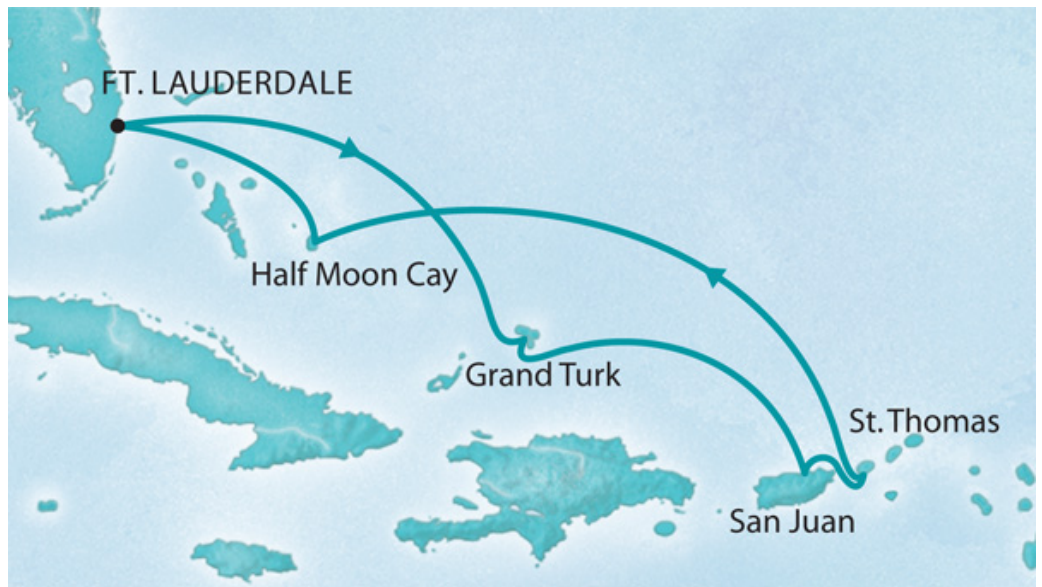
Speaker: **Jim Bell, Ph.D.**

The solar system is teeming with millions of asteroids and comets, and occasionally they crash into the planets with catastrophic consequences. Planetary scientist Jim Bell leads a discussion about the science fact and science fiction of the role of such impacts in shaping the geology and biology of our home world. Earth has been hit in the past, with severe consequences for life on our planet. Will Earth be hit again in the future? Almost certainly. Unlike any previous species in history, however, we have the chance to understand the threat ahead of time and, perhaps, to prevent a planetary-scale catastrophe.

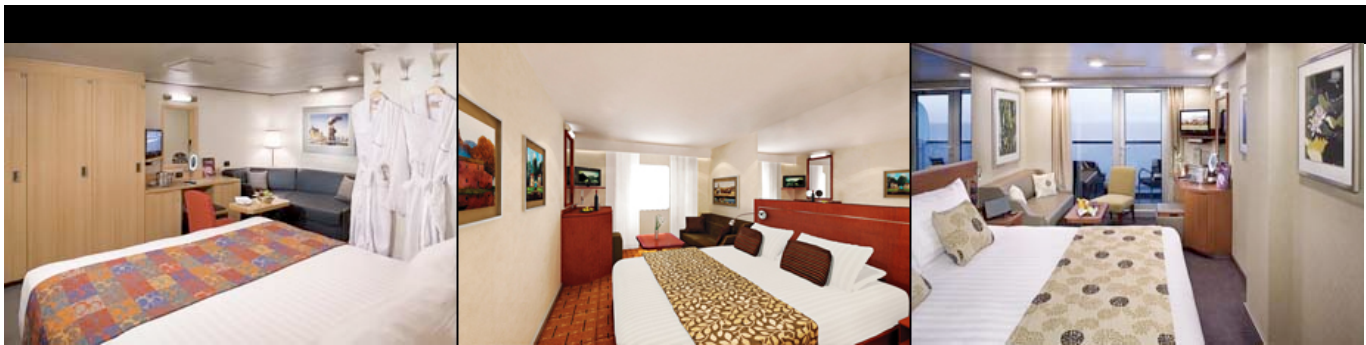
**Searching for Life in the Solar System and Beyond**

Speaker: **Jim Bell, Ph.D.**

Are we alone? The search for habitable environments and for life on other worlds is a major driving force for the exploration of the solar system. Join Prof. Bell as we explore the short list of worlds around us that may once have been (and perhaps still are, in places) habitable: Mars, Jupiter's moon Europa, Saturn's moons Titan and Enceladus, and perhaps other places as well. During the last decade scientists have also discovered an amazing diversity of life on our own planet, thriving in what were once considered hostile conditions. And during the same time, astronomers have discovered hundreds of planets orbiting other Sun-like stars, and some of them may be habitable as well. It's an incredible time to search for life in the solar system and beyond!



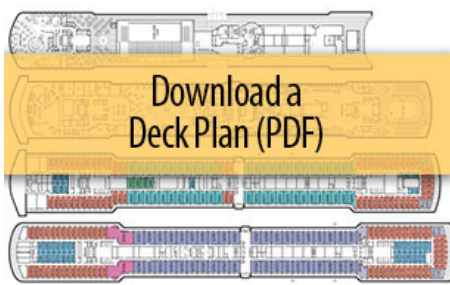
DAY	PORT	ARRIVE	DEPART	CONFERENCE SESSIONS
SATURDAY, DECEMBER 5	<u><a href="#">FT. LAUDERDALE, FLORIDA</a></u>	—	5pm	7pm, BON VOYAGE COCKTAIL PARTY
SUNDAY, DECEMBER 6	AT SEA	—	—	8:30am – NOON & 1:30pm – 5pm
MONDAY, DECEMBER 7	<u><a href="#">GRAND TURK, TURKS &amp; CAICOS ISLANDS</a></u>	7am	3pm	3:30pm – 7:30pm
TUESDAY, DECEMBER 8	<u><a href="#">SAN JUAN, PUERTO RICO</a></u>	10am	11pm	—
WEDNESDAY, DECEMBER 9	<u><a href="#">ST. THOMAS, U.S.V.I.</a></u>	8am	5pm	6pm – 8pm
THURSDAY, DECEMBER 10	AT SEA	—	—	8:30am – NOON & 1:30pm – 5pm
FRIDAY, DECEMBER 11	<u><a href="#">HALF MOON CAY, BAHAMAS</a></u>	8am	4pm	4pm – 7pm
SATURDAY, DECEMBER 12	<u><a href="#">FT. LAUDERDALE, FLORIDA</a></u>	7am	—	



Better Inside: \$799

Better Outside: \$899

Verandah: \$1,199 – \$1,399



Deck Plan of Our Ship (pdf)



Superior Suite: \$1,799

Full Suite: \$2,999

---

## Program (continued)

Full payment is due on September 1, 2009

(or, if you book after September 1, at the time of booking).

**Foreign Shipping Fees and Additional Payment Information:** There is a foreign shipping charge of \$60 (to cover the shipping of your cruise tickets, via FedEx) per foreign residence (\$35 per Canadian residence). There is a \$25 charge for returned checks.

**Air Add-ons:** Airfare from most major cities is available through the cruise line. You can call our office for this pricing. (These rates include transfers to/from the dock/airport plus transfers to/from your hotel if we've booked the hotel as well.) In most cases, however, you will find better airfares on your own. Online travel sites such as Expedia.com, or Orbitz.com are excellent resources.

**NOTE:** Holland America will not accept any booking unless a fully completed Reservation Form is accompanied with a per-person deposit:

[http://www.InSightCruises.com/booking\\_d/sa06\\_booking.html](http://www.InSightCruises.com/booking_d/sa06_booking.html).

Have questions? Want to book voice-to-voice? Please give us a call: 650-787-5665



[neil@InSightCruises.com](mailto:neil@InSightCruises.com)  
[theresa@InSightCruises.com](mailto:theresa@InSightCruises.com)

InSight Cruises, Inc.  
561 Windsor Drive  
Menlo Park, CA 94025  
650-787-5665  
CST# 2065380-40

### **Studying the Solar System in 3-D**

Speaker: **Jim Bell, Ph.D.**

Don your red-blue glasses and join planetary imaging expert Prof. Jim Bell on a voyage of 3-D discovery of the solar system. Stereo pictures of Mars, the Moon, Saturn, asteroids, comets, and other places taken by astronauts and robotic space probes provide new details about the geology and history of our planetary neighbors. Learn about the ways that 3-D images are taken, and the ways that they are used by scientists and engineers involved in space exploration. Viewing the solar system in 3-D is the next best thing to being there!

### **Intro to Geothermal Energy**

Speaker: **David D. Blackwell, Ph.D.**

Get in on the ground floor of geothermal energy. Dr. Blackwell will cover the natural foundations of this alternative energy resource. You'll deepen your understanding of the origin of the earth's heat, the role of plate boundaries, spreading centers and hot spots, mechanisms of tapping geothermal, and the risks and benefits, advantages, and disadvantages of tapping this resource.

### **Future of Energy-Geothermal as a Major Player**

Speaker: **David D. Blackwell, Ph.D.**

Any time zettajoules (10 superscript 21) enter the conversation about alternative energies, you know the potential for the resource is great. Dr. Blackwell will lay out the factors in play in a look at the practical future of geothermal energy. Raw and practical potential, inventory of accessible energy, environmental impact, and competitive position are some of the facets in the discussion. Geothermal economics are on the agenda, too: Short and long term investment and implications, direct and indirect costs, and domestic and imported sources.

### **Geology and Plate Tectonics of Europe**

Speaker: **David D. Blackwell, Ph.D.**

Take a guided tour of the European area of the vast Eurasian tectonic plate. From topology to geology to tectonics, you'll get a picture of the forces that created Europe, and continue to shape it today.

Basins, plains, volcanoes, and mountain ranges have stories to tell. Survey the terrain with Dr. Blackwell.

### **Plate Tectonics**

Speaker: **David D. Blackwell, Ph.D.**

Glide into an updated understanding of plate tectonics. Join Dr. Blackwell for a discussion of the development of the theory, its key principles, and its consequences. You'll learn about physical properties of the dynamic lithosphere, athenosphere, and mantle layers versus chemical layers of the earth, driving forces of plate movement, and the relationship of plate boundaries to geological events such as earthquakes and the creation of topographic features like mountains, volcanoes, and oceanic trenches.

---

## Program (continued)

### **Immune Mediated Responses: A Double-Edged Sword**

Speaker: **Noah Isakov, Ph.D.**

While scientific speculation about the immune system dates back to the Plague of Athens in 430BCE, the discipline of immunobiology defined itself in the 19th and 20th centuries. Refresh your picture of the immune system with Dr. Isakov, starting with discussions of:

- Introduction to immunobiology
- Basic concepts of the immune system
- Failure of host defense mechanisms

### **The Many Facets of the Allergic Responses**

Speaker: **Noah Isakov, Ph.D.**

Many faceted if not many splendored, allergic phenomena have increased in prevalence over the past several decades. Join Dr. Isakov for the latest thought on:

- Allergens, asthma and other types of immune-mediated responses
- Effector mechanisms in allergic responses
- Approaches for prevention and treatment of allergy

### **Understanding the Roots of Cancer**

Speaker: **Noah Isakov, Ph.D.**

Dr. Isakov will orient you to the evolving views of the genesis of cancer. Internal and external factors, oncogenes, tumor suppressor genes, cell transformation, immunosurveillance, immunoediting, and immunotherapy are all part of the mix. Learn:

- What causes normal cells to become cancerous
- How cancer cells from a primary tumor form metastases in remote organs
- Immune-mediated approaches for the treatment of cancer diseases

### **Monoclonal Antibodies and Cancer Immunotherapy**

Speaker: **Noah Isakov, Ph.D.**

Take a look under the hood of contemporary immunotherapy. From molecular biology to medicine, monoclonal antibodies are a valuable part of the scientist's toolkit. From his view deep in the trenches of immunobiology, Dr. Isakov will offer:

- An overview of antibody molecules
- A guide to the production of monoclonal antibodies with specificity against a predetermined pathogen
- The scoop on monoclonal antibody use in research, diagnosis, and therapy

### DAY TRIP TO ARECIBO OBSERVATORY

Get an insiders' tour of this iconic facility, and absorb an in-depth look at the unique contributions derived from Arecibo research and development. Join us as we wind through the rainforest-blanketed karst terrain of Northern Puerto Rico. We'll get a sense of the massive physical scope of the Arecibo radio telescope. We'll boldly go where ordinary visitors are not permitted. NAIC scientists will update us about the radio astronomy, planetary radar discoveries, and climatology research at the observatory. From the monitoring of near-earth objects to cosmology, astrophysics, and global warming research, you'll gain insight into the vital activities at Arecibo. *(Optional eight-hour tour price: \$175. Includes transportation, entrance fees, and a private luncheon at the Arecibo Observatory.)*

Plus, a 30-minute Q&A/open forum with the author of *The Physics of Star Trek* Lawrence Krauss, Ph.D.

---

## Program (continued)

### **An Atom From Boston**

Speaker: **Lawrence Krauss, Ph.D.**

Standing somewhere between natural history and biography, Dr. Krauss lays out the life history of an single atom from the beginning of the universe to the end. Life is a journey, and this atom's journey runs from nuclear physics to chemistry to cosmology, with passages through geology and biology along the way. Whether you are an atom aficionado, or more a "universe in a grain of sand" type, sit with Dr. Krauss for a refreshing look at an atom..

### **Einstein's Biggest Blunder — A Cosmic Mystery Story**

Speaker: **Lawrence Krauss, Ph.D.**

Recent discoveries have implications for our understanding both of the future of our universe and life within it and for our understanding of fundamental physics. Join Dr. Krauss as he covers the fate of the Milky Way, what lies beyond the event horizon, and cosmic phenomena of the next 100 billion years..

### **The Undiscovered Country**

Speaker: **Lawrence Krauss, Ph.D.**

We humans have undoubtedly questioned the origins of the cosmos for as long as we've walked the Earth but we've made spectacular progress in recent years. This progress forces us to discard much of what cosmology textbooks told us up until quite recently. Get the latest on competing ideas, their implications, and how they can be experimentally tested.



# Bright Horizons 6 Making Your Reservation

## E. Caribbean • December 5th – 12th, 2009

The following information will help you book your Bright Horizons cruise effectively and efficiently. Please read all the information carefully before completing the reservation form. At approximately four to five weeks prior to sailing you will receive your tickets. **Only passengers booked through InSight Cruises will be able to participate in the Bright Horizons Program.**

### HOW TO BOOK:

#### Select Plan I, II, III, IV, or V

Cabin prices vary by the category and type of accommodation you select. You can choose Inside cabins (without a window), Outside cabins (with a window, porthole, or verandah), Mini-Suites, and Suites. All cabins have a private bathroom with shower (outside cabins also have bathtubs), color TV, telephone, and two beds which can convert to a queen-size bed. Some cabins can accommodate a third and/or fourth person. A limited number of cabins for the Physically Challenged (PC) are available upon request. You have five (5) options when choosing how to sail with us:

**(I) TWO PERSONS SHARING THE SAME CABIN:** Double occupancy means that two passengers will be sharing the same cabin. All cabins have either two lower beds, or beds that may convert to a double or queen-size or king-size bed.

**(II) TRIPLE AND QUAD OCCUPANCY:** If three or four family members or friends wish to share the same cabin, they may do so. The third and fourth passenger rates are listed in the pricing information (see next column).

**(III) SHARE FARES:** This plan is for passengers who are coming on Bright Horizons #6 by themselves and wish to share a cabin with another passenger in our group in an inside, outside, or outside w/ verandah cabin only. The prices are the same as the per person double occupancy rates. Be sure to select the option on the online booking form that says "Do you want to share a room with another InSight Cruiser? (This is called our Guaranteed Share program)." **NOTE:** Share cabin assignments are generally done at time of ticket issuance, only — and shared cabin assignments are subject to change. If you can be matched, you will be matched with members of the same gender, and we factor in age and geography where possible.

**(IV) SINGLE OCCUPANCY:** If you would like to be the sole occupant of a cabin, there is a single-occupancy upcharge of 50% for cabins without a balcony or a 100% upcharge for all cabins with verandahs (i.e., balconies).

**(V) PHYSICALLY CHALLENGED (PC):** The ship has a very limited number of specially equipped cabins for the Physically Challenged. Please let us know your specific needs. PC Guaranteed Shares are not available. Here's some [written material](#), from Holland America, about PC accessibility. And here is a [video](#):



**CRUISE PRICING INFORMATION:** Government taxes are in addition to the per person cruise rates listed below. The cruise pricing (just below) is subject to change. If at the time of booking the cruise line notifies us that the price of cruise fare has increased, you will notified of the new pricing before your reservation is booked.

**In order for you to be a confirmed attendee we must have a fully completed Booking Form along with your \$400 per-person deposit.** A link to the Booking Form can be found at the bottom of this page. (Alternatively, you may call us to complete this Form.)

**FULL PAYMENT is due on September 1, 2009 ("FINAL PAYMENT Deadline") (or, if you book after September 1, at the time of booking).** Passengers are not confirmed on the manifest and cruise tickets are not issued until your account is paid in full.

[\*\*Book This Cruise Now!\*\*](#)

**All cruise prices are subject to change until your booking is confirmed. We will notify you of any price changes, and await your acceptance, before your reservation is considered "booked" and confirmed. Either party may cancel the booking within 14 days of initial \$400 deposit, with no penalty, for any reason. We'll send you an email confirmation (if you provide us with your email address) and an itemized invoice ("DEPOSIT AND FINAL PAYMENT CONFIRMATION") via mail/post within three (3) business days of your deposit. You must return a signed copy of your DEPOSIT AND FINAL PAYMENT CONFIRMATION form within 30 days of booking or your cruise reservation is subject to cancellation. If you do not return this form by the FINAL PAYMENT date, your cruise reservation will automatically be cancelled and cancellation penalties will be assessed. You will be sent reminders via email and by phone before your reservation is cancelled. Passengers typically receive cabin assignments upon booking but these cabin assignments are subject to change.**

**ALUMNI DISCOUNTS:** A \$25 discount is given for each previous InSight Cruise attended. Minimum discount is \$50 per person for previous InSight Cruisers.

**FOREIGN SHIPPING FEES and ADDITIONAL PAYMENT INFORMATION:** There is a foreign shipping charge of \$60 (to cover the shipping of your cruise tickets) per foreign residence (\$35 per Canadian residence).

Payments may be made by check, money order or major credit card (Visa, Master Card, Discover, Diners Club, or American Express). Checks are to be made payable to Int'l Technology Conferences, in U.S. dollars only, and drawn on a U.S. bank. There is a \$25 charge for returned checks.

**PRE-CRUISE HOTEL STAYS:** Sightsee Ft. Lauderdale from our on-the-beach homebase, the [Westin Ft. Lauderdale](#) (or equivalent). A transfer from the airport to the hotel and then from the hotel to the ship (two transfers total), and all taxes, are included in the prices below.

	<b>1 NIGHT</b>	<b>ADD'L NIGHTS</b>
SHARED DOUBLE	\$179	\$129
SINGLE OCCUPANCY	\$299	\$249
3RD and/or 4th PERSON	\$179	\$129

(All prices are PER PERSON. Hotel prices subject to change. If, when you book, the prices have changed you will be notified. Hotels stays can be removed from your reservation prior to FINAL PAYMENT Date without any penalty.)

**PRE-CRUISE COCKTAIL PARTY:** \$69. Shift mental gears and start your road trip by joining us at the Bright Horizons Pre-cruise Cocktail Party! Take this opportunity to meet your fellow Bright Horizons travelers. The reception will be held in the PRE-CRUISE HOTEL (Westin Ft. Lauderdale) the night before departure. Premium beer, wines, mixed drinks, and hot and cold hors d'oeuvres will be served.

**IDENTIFICATION REQUIREMENTS:** A Passport (valid through March 1, 2010) is required. Non-U.S. citizens residing in the United States will need valid Alien Registration (green) cards as well. All others must have valid passports and any required visas when boarding the vessel. All travel documents such as passports, visas, proof of citizenship, etc., that are required for embarkation, disembarkation at the ports of call, and re-entry into the United States are the responsibility of the passenger. Non-U.S. citizens are asked to check with government agencies, embassies or consulates to determine documentary requirements. You may be denied boarding without proper proof of citizenship.

Along with many thousands of American travelers, we rely on [Zierer Visa Service](#) for our visas (we are not affiliated with Zierer, we are simply happy customers).

**BRIGHT HORIZONS PROGRAM CANCELLATIONS and REFUNDS:** The Bright Horizons Program fee is subject to the following cancellation fees: \$95 if cancelling before September 1, 2009; \$195 if cancelling from September 1, 2009 to October 31, 2009; \$395 if cancelling between November 1, 2009 and November 15, 2009; no refunds offered if cancelling after November 15, 2009. All conference cancellation fees, however, can be applied to any future InSight Cruise!

**CRUISE CANCELLATIONS, REFUNDS, INSURANCE and CHANGES:** Any cancellation or any change of status (or request for a change in status) which relates to your booking must be transmitted, AS SOON AS POSSIBLE, to InSight Cruises in writing. If you have purchased insurance, and there is an unnecessary delay in notifying us of your change in status, your "cancellation date" will be affected and will likely adversely affect your insurance reimbursement.

From the 14th day after booking, a Cancellation Processing Fee of \$150 per person will be assessed (but will be applied towards any future InSight Cruise). Name changes are generally not permitted by the cruiselines. Per person cruise cancellation fees are based on date of notice to InSight Cruises (via in writing or email):

- ▶ Cancellation within 14 days of booking (prior to final payment date): full refund
- ▶ Cancellation more than 14 days after booking (prior to final payment): \$150 cancellation fee
- ▶ Cancellation on or after FINAL PAYMENT Date but 60 days prior to departure: You forfeit your \$400 deposit
- ▶ Cancellation between 59 and 22 days prior to departure: 50%
- ▶ Cancellation between 21 days prior to departure date of departure (or later): no refund

**Guarantee Shares please NOTE: If you cancel within 60 days of sailing, you forfeit your entire cruise fee.**



NOTE: "Departure Date" also incorporates any cruiseline air and/or purchased cruiseline pre-cruise hotel stays. Please understand that there will be no exceptions to our cancellation policy.

To protect against cancellation penalties, [Trip Cancellation & Interruption Insurance](#) is available and strongly recommended. InSight Cruises provides access to this insurance; a [TripInsurance.com Enhanced Protection](#) brochure is included with you initial invoice. TripInsurance.com is the most cost-effective product we've seen and for \$30 extra, trip cancellation or interruption due to unforeseen business reasons can be purchased. TripInsurance.com is only available for U.S. and Canadian residents. Trip Cancellation payments are not refundable (but sometimes are transferrable).



[neil@InSightCruises.com](mailto:neil@InSightCruises.com)   [theresa@InSightCruises.com](mailto:theresa@InSightCruises.com)

CABIN TYPE	<b>CRUISE RATES ARE PER PERSON, BASED ON DOUBLE OCCUPANCY PRICING &amp; AVAILABILITY ARE SUBJECT TO CHANGE</b>	
<a href="#"><u>BETTER INSIDE CABIN</u></a>	\$799	[ GUARANTEED SHARE (GS) AVAILABLE — SEE (III) ABOVE ]
<a href="#"><u>BETTER OUTSIDE</u></a>	\$899	[ GS & PHYSICALLY CHALLENGED (PC) AVAILABLE ]
<a href="#"><u>VERANDAH</u></a>	\$1,199–\$1,399	[ PHYSICALLY CHALLENGED (PC) AVAILABLE ]
<a href="#"><u>SUPERIOR SUITE</u></a>	\$1,799	[ PC AVAILABLE ]
<a href="#"><u>FULL SUITE</u></a>	\$2,999	[ PC AVAILABLE ]

**3rd AND/OR 4th PERSON RATE:** ages 2 and older: \$550; under 2 years old: \$450.

**NOTE: CRUISE PRICES SUBJECT TO CHANGE:** If, when you book, any of the prices on this page have changed you will be notified and have the option to cancel without penalty.

**WHAT'S INCLUDED IN THE CRUISE PRICE:** Port taxes of \$165 are included. Also included is all your food (excluding optional meals in the private restaurants), including 24-hour room service and a 24-hour pasta bar; tea, coffee, a half-dozen juices, and milk; use of the gym; and, every evening, Holland America provides top-flight Las Vegas-style entertainment in their large show lounge.

**WHAT'S INCLUDED IN THE BRIGHT HORIZONS PROGRAM:** Over 24 hours of programming in all! The Program fee is \$1,375. Traveling companions who do not want to participate in our Bright Horizons Program can simply enjoy their cruise and need not pay this additional fee.

**WHAT'S NOT INCLUDED:** Government taxes (\$76.71), gratuities (\$11 per person per day), your bar bill, soda, the spa, casino action, Holland America shore excursions, and any expenses of a personal nature are extra. (Taxes and fees are subject to minor change.)

**AIR TICKETS PURCHASED INDEPENDENTLY OF THE CRUISE:** We urge you to check airline cancellation penalties before purchasing airline tickets since international departure times and flights can change. Neither Scientific American nor InSight Cruises accepts liability for cancellation penalties related to domestic or international airline tickets purchased independently in conjunction with this cruise.

**AIR ADD-ONS:** Airfare from most major North American cities is available through Holland America. InSight Cruises passes on Holland America costs plus adds a \$50 per person service fee. Please call or email us for an exact quote. In most cases, however, you will find better rates on your own. The advantage of booking flights through the cruiseline is that they take responsibility for getting you on the ship. For mid-winter cruises, when flights are occasionally cancelled, this is an added measure of comfort!

**Need help? Have questions?**

**Want to book voice-to-voice?**

**Please give us a call: 650-787-5665**

**READ CAREFULLY:  
RESPONSIBILITY STATEMENT AND LIABILITY DISCLAIMER**

Bright Horizons is managed by InSight Cruises, hired as an independent contractor. InSight Cruises acts only as an agent for the respective suppliers by making arrangements for transportation, accommodations, and other services. Neither Scientific American nor InSight Cruises shall be held liable for personal injury, death, property damage or accident, delay, or irregularity arising out of any act or omission of these suppliers. Scientific American and InSight Cruises reserve the right, without penalty, to make changes in the published itinerary whenever, in their judgment, conditions warrant, or if they deem it necessary for the comfort, convenience, or safety of our participants.

Scientific American and InSight Cruises also reserve the right, without penalty, to decline to accept any person as a participant, or to require any participant to withdraw from the event at any time, when such action is determined by InSight Cruises staff to be in the best interests of the health, safety, or general welfare of the group or the individual participant, subject only to the requirement that the recoverable portion of the total amount paid that corresponds to the cost of unused services and/or accommodations be refunded, if applicable. Scientific American and InSight Cruises accept no liability for the purchase of non-refundable airline tickets to the cruise departure city and return. Baggage and personal effects are at all times the sole responsibility of the participant.

Dates, schedules, and program details, although provided in good faith based on information available at the time of publication of the brochure or catalog, are subject to change and revision.

**AS A CONDITION OF ACCEPTANCE OF ANY APPLICATION, EACH APPLICANT MUST AGREE TO THE STATEMENT SET FORTH BELOW:**

The undersigned has read carefully the Responsibility Statement and Liability Disclaimer set forth (left), the schedule of activities for this event, as well as the terms and conditions of application and participation as set forth in the event brochure and/or these webpages, and recognizes and accepts any risk associated with the event and the conditions, including the refund policy, set forth above. The undersigned further acknowledges that there are many risks and uncertainties inherent in any travel, including but not limited to the hazards of various modes of transportation, forces of nature, acts or omissions of foreign governments, terrorism, war or insurrection, theft, illness, and damage to person or property due to the negligent acts or omissions of event staff or others. In consideration of, and as part payment for, the right to participate in the event, the undersigned, on behalf of himself, his dependents, heirs, executors, administrators and assigns, agrees to release Scientific American, their officers, employees, representatives or agents, and InSight Cruises and its officers, employees and agents, from liability for personal injury, death, property damage or loss suffered by any person in connection with this event, even if caused by the negligence (but not the reckless, willful, or fraudulent conduct) of event staff or other related persons or entities. In addition, by registering for this event, the applicant certifies that he or she is mentally and physically capable of full participation in this tour.

**BY REGISTERING FOR THE BRIGHT HORIZONS CRUISE, THE PARTICIPANT AGREES TO THE RESPONSIBILITY STATEMENT AND LIABILITY DISCLAIMER AND THE TERMS AND CONDITIONS HEREIN.**

**We'll mail out a receipt shortly after you book. To be confirmed on the cruise, we must have a fully completed Booking along with your per person deposit. Passengers will receive cabin assignment upon booking but these cabin assignments are subject to change.**

I have read and agree with all of the above.

**Book or price this cruise now!**

**InSight Cruises** ([CST# 2065380-40](tel:206538040))

264 S. Meridith Ave.  
Pasadena, CA 91106

TEL: (650) 787-5665

Email: [neil@InSightCruises.com](mailto:neil@InSightCruises.com)