



Shore

Excursions

2008 ALASKA CRUISES



Holland America Line

A Signature of Excellence

SE-804



Contents

Make Your Reservations Online	1
Frequently Asked Questions	2
The Collections of Holland America Line	4
How to Choose Your Tours	7
Shore Excursion Prices	8
How to Book More Than One Tour in Each Port	8
The Benefits of Booking With Us	9
About Touring in Alaska	10
About Flightseeing	11
Haines, Alaska	13
• Sightseeing	13
• Adventure	16
• Visit Skagway	25
Juneau, Alaska	30
• Flightseeing	30
• Sightseeing	39
• Adventure	47
Ketchikan, Alaska	55
• Flightseeing	55
• Sightseeing	60
• Adventure	68

Seattle, Washington	79
• Sightseeing & Transfers	79
Seward, Alaska	82
• Sightseeing	82
• Transfers	84
Sitka, Alaska	87
• Sightseeing	87
• Adventure	94
Skagway, Alaska	99
• Flightseeing	99
• Sightseeing	102
• Adventure	112
• Visit Haines	120
• Adventure	120
Vancouver, B.C., Canada	123
• Sightseeing	123
• Transfers	125
Victoria, B.C., Canada	126
• Sightseeing	126
• Adventure	131
General Information	132





Make Your Reservations Online

Now you can easily choose your tour times, book your tours and receive confirmation of your shore excursion reservations 24 hours a day. Visit us online at

www.hollandamerica.com

Book online now, up until five days before sailing. Make your payment online via our secure website, and receive confirmation as well as your approximate tour departure times. You can also download the shore excursions, view tour prices, find answers to frequently asked questions and read general information.

Remember, online shore excursion reservations are processed prior to any requests made on board the ship and receive priority handling.

GENERAL INFORMATION

At the time of making your reservations online, we will advise you whether or not your reservations are confirmed or whether you have been waitlisted. Your credit card will be charged immediately for all confirmed reservations. Should space become available for a waitlisted shore excursion request, we will e-mail or otherwise contact you at that time and either immediately charge your credit card if you have already given us your credit card information or ask you to provide us with that information for immediate charge processing. Shore excursion reservations are subject to cancellation by us at any time prior to the credit card charge being accepted by your bank. If you or Holland America cancel a tour more than 10 days prior to cruise departure, we will issue a credit on the credit card that you used to pay for the reservation. For any cancellation within 10 days of departure, a credit will not be given on your credit card. Instead, we will apply an ONBOARD CREDIT ONLY policy under which the refund (less any cancellation fee) will show up as a credit to the shipboard account of the person who was to take the shore excursion. If the credit is not fully utilized during the cruise, the balance will be paid to that guest by the ship's Purser.



Frequently Asked Questions

WHAT SHOULD I WEAR?

Comfortable walking shoes are recommended for all shore excursions. When you visit places of worship (cathedrals, churches, etc.), we recommend dressing conservatively (shorts and sleeveless sundresses should not be worn), but casual clothing is perfectly acceptable. Dress in layers and have a jacket along. Bring an umbrella or raincoat, a hat and sunscreen.

WHAT ABOUT MEALS?

Most tour departures complement the ship's meal service hours. In-room dining is available on board.

HOW WILL I KNOW WHAT TIME EACH TOUR DEPARTS?

The on-board Shore Excursions Order Form in your stateroom will show departure times. This information will also be printed on your shore excursion tickets, which you will receive on board. Approximate tour departure times are posted on our website at www.hollandamerica.com.

I HAVE A DISABILITY. HOW DO I KNOW WHICH TOURS WILL BEST SUIT ME? WILL I HAVE A PROBLEM (DIS)EMBARKING THE SHIP?

Guests with disabilities should inquire in advance whether a shore excursion will be able to accommodate their needs. We have graded the Shore Excursions according to the relative level of activity they entail. The walking icons that appear at the beginning of each tour description provide a general idea of the level of activity to expect. Please refer to the "Choosing Your Tours" section in this brochure for specific information on the walking icons. It is important to keep in mind that shore excursion operators are subject to the laws of their own country including with respect to accommodating the needs of guests with disabilities. In most foreign countries, the laws are not as stringent as those in the United States. Please speak with the Shore Excursions Office as to whether you can expect to encounter difficulties (dis)embarking the ship in a particular port of call. In this regard, the decision whether or not to carry or provide other mobility assistance to a guest and their mobility assistance

device (wheelchair, walker, etc.) up or down a ship's gangway, or on or off a tender boat, is at the sole discretion of the Captain, made based on his evaluation of guest and crew safety. We encourage you to bring a collapsible wheelchair as space limitations may restrict the ability of some tour operators to accommodate motorized mobility aid devices.

DO ALL THE PORTS AND TOURS IN THIS BROCHURE PERTAIN TO MY CRUISE?

Not necessarily, as this brochure may cover more than one sailing. Please refer to your cruise itinerary to determine which ports you will visit, then turn to those port sections to see the tours. Not all tours in each port are available on all ships or all cruises.

ARE THERE ANY OTHER TOURS OFFERED THAT ARE NOT PUBLISHED IN THIS BROCHURE?

Yes, we often add tours to our program after the brochure is published. For additional tours that may now be available in the ports you are visiting, please check our website at www.hollandamerica.com.

I AM TRAVELING WITH FRIENDS AND WE WOULD LIKE TO BE ON THE SAME MOTOR COACH

The departure location for each shore excursion is printed on your shore excursion tickets. If you wish to travel with friends, please arrive at the designated meeting place together. This will enable the staff to allocate space for you on the same vehicle.

TOUR DURATIONS

This brochure is designed to help you select the excursions most suited to your interests. The individual tour descriptions include approximate durations. To allow our Shore Excursions Managers flexibility to coordinate your time in port with meals and activities on the ship, exact departure times are published in the Shore Excursions Order Form on board. For more information, please attend the Shore Excursions Presentation or visit the Shore Excursions Office.

TOUR DESCRIPTIONS

Tour descriptions may change after printing. Information that becomes available after this brochure is published will be posted in the Shore Excursions section of our website, which can be found online at www.hollandamerica.com. Significant changes will be noted on the Shore Excursions Order Form on board. Tour schedules are subject to change.



The Collections of Holland America Line

What fascinates you? A cooking class with a local chef? A private car, complete with driver and guide, so you can explore near or far? A chance to encounter wildlife or view natural wonders up close? The Collections of Holland America Line represent a small subset of the shore excursions you will find in this brochure. Each collection offers its own particular focus and is available only in select ports.



Medallion Collection

A series of exclusive experiences designed to accommodate our most discerning guests, our Medallion Collection tours are each carefully chosen to provide an in-depth perspective.

They offer unparalleled access to events and sights not normally readily available. First-class style, smaller groups, multi-day Overland Adventures—elite activities for a privileged few.



Encore Collection

Been there, done that? Think again. Our Encore Collection, designed especially for repeat guests, lets you discover what lies beyond the well-known attractions you've

already seen. Barbecue with Argentine gauchos, bike the tree-lined boulevards of Barcelona, ride an Icelandic pony across a windswept beach near Reykjavik. These tours showcase hidden gems, unusual angles and inside stories that will bring you back time and again.



World Wonders Collection

Natural treasures, architectural marvels, technical wonders: to the Seven Wonders of the World we add our own nominations based

on decades of leadership in global travel—the grand palaces of St. Petersburg, the *moai* statues of Easter Island, and the Great Wall of China, among others. What they have in common is the ability to inspire awe.



Signature Collection

This exclusive touring option for independent-minded travelers lets you completely customize and maximize your time ashore by reserving private transportation (along with an English-speaking driver and guide) in advance. Whether you travel by car or minivan, customized boat, classic floatplane or stretch SUV limousine, you choose the companions, sights and pace that perfectly suit you.

TO WHOM IS THE SIGNATURE COLLECTION SUITED?

The Signature Collection is for solo travelers, couples, families, friends and special interest groups traveling together. This may also be an excellent choice for non-ambulatory guests. Value and flexibility are just two of the advantages of first-class touring and luxury transportation. Privacy, comfort, safety, and personalized guide service are also yours to enjoy.

ABOUT THE TRANSPORTATION

Each type of transportation will be of the highest grade available in that port. Not all modes of transportation are available in all locations. For information about the transportation sizes and availability, please see our website at www.hollandamerica.com.

ALSO INCLUDED

The cost includes the service of a driver and English-speaking guide, unlimited mileage, road tolls, parking fees and bottled water. Foreign language guides may be available upon request.

NOT INCLUDED (UNLESS OTHERWISE NOTED)

Guests' entrance fees for attractions are not included in the price due to the wide range of attraction possibilities, uncertain number of attractions to be visited, and varying number of guests participating. We strongly recommend that you bring some local

currency to cover such costs as credit cards are not readily accepted in some ports. Lunch will not be included on any tour as many guests prefer to select their own dining venue.

ITINERARY PLANNING

If you need help planning your personal itinerary, the Shore Excursions Manager can assist you and will gladly answer your questions. This can be very helpful in many destinations where travel time, location, holidays, and opening hours of attractions need to be taken into consideration in order to maximize the efficiency of your time ashore.

PRICING

The cost of each type of transportation will be published online at www.hollandamerica.com.

ONLINE RESERVATIONS

The fastest and easiest way for you to reserve and pay for your Signature Collection experience is on the Holland America Line website. Visit us online at www.hollandamerica.com. Please note the cost will be per mode of transportation (not per person), so only one person in the party needs to make the reservation. The price shown on the website is the total cost for the transportation, driver and guide (not a per-person price). In many ports, availability is extremely limited. We encourage you to reserve as early as possible.

PAYMENT & TOUR TICKETS

Your credit card will be charged after your reservation is confirmed. Next, start planning what you'll do with your Signature Collection experience in each port. On board the ship, you will be given a tour ticket and a Preference Card to advise the Shore Excursions Office of the itinerary you have chosen.

BOOKING ON BOARD

The Signature Collection may be available for booking once you are on the ship, but this cannot be guaranteed. Please check with the Shore Excursions Office on board.

DISSEMBARKING THE SHIP

In some disembarkation ports, a private vehicle, driver and guide can be used for sightseeing en route to the airport. When booking, please advise the total amount of luggage for your party. Vehicle size and luggage space may limit the number of guests in the vehicle.



How to Choose Your Tours

Choose the shore excursions that interest you by using the icons as a general guide to the level of activity involved, and select the shore excursions best suited to your physical capabilities. These icons will help you interpret this brochure.



EASY ACTIVITY: Very light activity including short distances to walk; may include some steps.



MODERATE ACTIVITY: Requires intermittent effort throughout, including walking medium distances over uneven surfaces and/or steps.



STRENUOUS ACTIVITY: Requires active participation, walking long distances over uneven and steep terrain or on steps. In certain instances, paddling or other non-walking activity is required and guests must be able to participate without discomfort or difficulty breathing.



ADVENTURE: This tour requires a high level of fitness; suitable for those accustomed to strenuous activity.



LIMITED CAPACITY: The number of people able to participate in this tour is strictly limited. Reasons for limiting capacity may include the number of transportation seats available, or the need to maintain a safe ratio of guides for hikes, fishing and water activities. Tours require a minimum number of participants in order to operate.



MEAL: This tour includes a meal—lunch on daytime tours, or dinner on evening tours.



SNACK: This tour includes a small snack or tasting of local specialties. The snack is not a meal.



Shore Excursion Prices



The Benefits of Booking With Us

Prices can be found on our website at www.hollandamerica.com and are quoted in U.S. funds. Prices are subject to change without notice. Prices for children 12 years of age and under are available on some, but not all, tours. If no child's price is published online, the tour may be available to children at the adult rate; however, regardless of rate, all children under 18 must be accompanied by a responsible adult aged 21 or older participating in the same tour. A general guideline to pricing is found under each tour listing with symbols as follows:

\$ – up to \$50USD

\$\$ – \$51USD to \$150USD

\$\$\$ – \$151USD to \$250USD

\$\$\$\$ – more than \$250USD



How to Book More Than One Tour in Each Port

Make the most of your time in each port by combining different half-day tours to complete a full day of sightseeing. You might want to consider a morning kayak excursion and an afternoon cooking class; helicopter flightseeing and a glacier walk followed by a whale-watching cruise; or even a bike ride, a salmon bake and a rain forest hike—all in one day! Whatever your interests, and whichever pace suits you best, there's a huge variety of tours to mix and match in this brochure. To make combining easy, for tour departure times and durations, visit our website at www.hollandamerica.com.

When you book your shore excursions with Holland America Line, you can count on our Signature of Excellence[®] to consistently offer a superior experience ashore:

QUALITY

Clean and comfortable transportation equipment; we engage professional independent tour operators dedicated to customer satisfaction.

SAFETY

Tour operators have contractually agreed to comply with local government requirements and to carry liability insurance in amounts consistent with local standards to address personal injury and property damage claims.

CONVENIENCE

English-speaking guides; tour departure times set to coincide with the ship's schedule as well as with that of other tours so that guests desiring to do so can take multiple tours.

PEACE OF MIND

If a tour that you have purchased through Holland America Line returns late to the ship, we will almost never leave without you. In the very rare event that the ship must leave, we will arrange at our expense to get you to the next port of call (with independently booked tours, you are responsible for rejoining the ship at the next port of call).

VARIETY

Around the globe, our programs include "A Taste of..", Off the Beaten Track, panoramic, flightseeing and motor coach tours, with such adventures as dog-sledding, kayaking, snorkeling, rock-climbing, glacier hiking and private vehicle/vessel touring.

VALUE

Our award-winning shore excursions offer superior quality and competitive pricing; our guests consistently rate their shore excursion experience as excellent.



About Touring in Alaska



About Flightseeing

ABOUT CHILDREN

Prices for children age 12 years and under are available on some but not all tours. If no child's price is published online, the tour may be available to children at the adult rate; however, regardless of rate, all children under 18 must be accompanied by a responsible adult aged 21 or older participating in the same tour.

ABOUT THE WEATHER

Alaska is well known for its "liquid sunshine," changing weather and cooler temperatures, so be prepared! The best plan is not to let the weather determine the kind of time you have, but to dress in layers—a shirt, sweater and light raincoat will do—so that you can add or remove layers as needed. Shore excursions operate in all weather conditions. Cancellations due to weather are at the determination of the tour operator only. No exceptions!

ABOUT HIKING

Whether hiking a forest path or mountain trail in Juneau, or exploring the rain forest and tide pools of Ketchikan, it is absolutely necessary to wear comfortable hiking boots or athletic shoes.

ABOUT FISHING

Fishing in Alaska lives up to its reputation! While we cannot guarantee a catch, if you are going fishing, you may want to have a plan for what to do once you've reeled in your fish! If your tour is not designated as "catch-and-release," you can review the processing options with your boat captain or guide and have the fish forwarded to your home. Your catch will not be allowed on board the ship.

ABOUT WILDLIFE

Although Alaska's wildlife is abundant, we cannot guarantee any wildlife sightings on any of the shore excursions advertised in this booklet unless indicated otherwise. We are confident that each independent tour operator will make every effort to accommodate the safe viewing of wildlife whenever possible.

ABOUT WAIVERS

A waiver release provided by the local tour operator may be required for participation in certain tours.

If you do nothing else when you're ashore in Alaska, take *at least* one flightseeing tour. While these shore excursions tend to be some of the more expensive offerings, rest assured that the perspective gained from aloft is absolutely priceless—in fact, you will be forever changed in how you think about Alaska and the sheer magnitude of nature exhibited here. You will discover glaciers that seem to tumble from heaven to earth, ice fields that seem to stretch to eternity, and jagged, unforgiving peaks that relentlessly reach for the stratosphere. This experience is so markedly different from any on land or sea, there is simply no comparison. And if you've ever thought that all shore excursions necessarily involve a motor coach and a museum, it's time to broaden your horizons. Whether you merely set foot on a glacier's surface or whether you strap on a set of crampons, grab an ice-axe and step out onto a river of ice that has outlived dinosaurs and constellations, you're headed for the real Alaska. Make sure you really see it! Within this brochure you will find three different types of flightseeing options:

HELICOPTER

These tours are for more active flightseers, with the opportunity to step out onto a glacier, ride a dog-sled across the surface of the Icefield, or go ice-trekking with full gear and an expert guide.

FLOATPLANE

One of the most important forms of transportation in Alaska is the floatplane—versatile, practical, ubiquitous. Most commonly used for bear-watching and fishing adventures, floatplanes are able to pull up to remote beaches, bringing you to the heart of the wilderness within minutes of leaving the ship.

FIXED WING

This term refers to a small plane with wheels (not floats) that is often used for glacier flightseeing.

WEIGHT REGULATIONS

Please note that on all helicopter flightseeing tours, guests weighing 250 lbs or more will pay an additional surcharge over the published fare. Every guest may be weighed during the

check-in process. The tour operator will endeavor to be discreet during this process, but please be aware that individual circumstances may not allow for complete privacy. For security reasons, carry-on bags may not be permitted in the aircraft. Secure areas will be provided to store your items for the duration of the tour.



Haines, Alaska



The tours in this section operate when the ship is in Haines. Guests whose cruise itinerary does not include a port-of-call in Haines, but includes the port of Skagway, please see page 120 for tours to Haines departing from Skagway.



SIGHTSEEING

Best of Haines by Classic Motorcar



Approximately 1 hour • \$\$

A knowledgeable and entertaining guide shows you the highlights of Haines and shares with you the rich history of the area. Elegantly curved fenders, polished chrome grilles, oversized steering wheels, roomy comfortable interiors and wide white wall tires all work to bring you the best of Haines in a 1930s or '40s six-passenger, vintage automobile. Roam back in time through historic Fort Seward and down coastal roads for an outstanding photograph of your ship. In downtown Haines, see totem poles and Native clan houses, then drive along the fjord, rimmed with mountains and glaciers, to one of the most scenic old canneries in Alaska. Keep a sharp eye out for eagles, and perhaps whales, seals or dolphins, and maybe even a moose or two.



Offbeat

Haines



Approximately 2 - 2½ hours • \$

This small group tour takes you to three of Haines' most unusual and out-of-the-way attractions—the Hammer Museum, Extreme Dreams Art Studio and Dalton City. Begin with a ten-mile scenic drive along the Chilkat River. At the small artists' enclave of Mud Bay you will visit the Extreme Dreams Art Studio, owned by artists John and Sharon Svenson. John, a zany mountain climber, Sharon, a talented weaver, and Whoopee, their pet poodle, will greet you upon arrival. Their handcrafted timber frame art gallery sports a spectacular view of the Rainbow Glacier and is filled with unique and unusual creations by Alaskan artists. Continue with a tour of downtown Haines, Fort Seward and a visit to Dalton City, created for the Walt Disney film *White Fang*. Your guide will entertain you with stories from the winter of 1989; the year that pampered Hollywood film stars rubbed elbows with rugged Haines fishermen, loggers, and miners. Stroll down Main Street and learn about the attractions of this photogenic “gold rush town”—Haines Brewing Company, the Klondike Saloon, and the Haines Community Garden. End your tour with a visit to the Hammer Museum. You really have to see it to believe it! Meet the curator and find out why Haines is home of the only museum in the world dedicated to this under-appreciated household tool. Learn about the connection between Haines' Hammer Museum and the Smithsonian Institution in Washington, D.C. Touch, see, and learn about unique inventions such as the three-clawed hammer, the magnetic hammer, and the Tlingit ceremonial hammer, and leave with a smile on your face.

Chilkoot Lake Cruise & Wildlife Exploration



Approximately 3 hours • \$\$

Board an open-air pontoon boat for an enchanting tour of beautiful Chilkoot Lake. Here, you may have the opportunity to observe spawning sockeye salmon, fierce bald eagles and, hopefully, giant brown (grizzly) bears as they feed upon the salmon, undisturbed by your presence. Mountain goats are also often seen grazing along the cliffs, while black bear and moose feed on the intermediate slopes in the late spring/early summer.



From the coastal estuary to the glacial inlet river watch birds of all types. Virgin forests of spruce, hemlock, cottonwood and alder cloak the lower mountains while snow-capped peaks and glaciers shine above. Be enthralled by legends of Alaskan heroes and villains, local history, native lore and tales of the wild.

Please note: The boat is covered during inclement weather.

Historical Walking Tour



Approximately 1½ hours • \$

Haines is ideal for a walking tour and for taking an up-close look at the history, Native culture, local plants, and present-day lifestyle of this small Alaskan town. A local guide will show you the highlights of Fort William H. Seward, including Officer's Row, Soap Suds Alley, the parade grounds, and the old barracks building. Visit the former army hospital that houses Alaska Indian Arts, where totem poles, masks and rattles are created. Peer into local gardens as you walk the lesser-known paths to the town center, where you may choose to stop by the local museum, spend some time shopping, or return to the ship with your guide.



A Taste of Haines



Approximately 2 hours • \$\$

Sample some of the fresh products that Haines has to offer on this small-group tour. Meet your local guide and head out to Dalton City, a charming gold rush town created for the 1989 Walt Disney film, *White Fang*. Tour Haines Brewing Company, Alaska's smallest brewery with an annual production of only 300 barrels. Meet the brewmaster and learn about the challenges of producing beer in this small Alaska town while you sample Dalton Trail Ale and Eldred Rock Red. Continue with a driving tour of downtown Haines and Fort Seward, and arrive at Dejon Delights to



learn how the experts smoke salmon and halibut using smoldering Alaskan birch and black cottonwood. Sample one-of-a-kind recipes such as Lookout Stout-Smoked Sockeye and Lemon-Peppered Halibut. There will be time for shopping before returning to the ship.

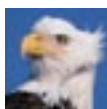
Please note: Guests must be 21 years or older to sample the beer.

Deluxe Haines Highlights



Approximately 3 hours • \$\$

This trip combines the history and highlights of one of Alaska's best kept secrets—the quiet, uncrowded, picturesque town of Haines. Board a motor coach at the dock and enjoy a narrated tour through historic Fort William H. Seward (the first US Army outpost in Alaska) on your way to downtown Haines. Visit the American Bald Eagle Foundation interpretive wildlife education center to learn more about these majestic birds and other native wildlife, then you'll drive south of town to Letnikof Cove on the Chilkat Peninsula, where glaciers, towering peaks, rivers and the sea all converge to create beautiful vistas. Here, you'll visit the Haines Packing Company's fish processing plant. The smokery, which you will see in action if your visit coincides with fishing season, was built in 1917 but it is now a state-of-the-art facility complete with pinbone extractors, blast freezers and vacuum packing machines. Return to Haines after your tour.



ADVENTURE

Eagle Preserve Float Adventure



Approximately 4 hours • \$\$

The world famous Chilkat Bald Eagle Preserve boasts the world's largest gatherings of bald eagles. It is also home to moose, bears, wolves, and a host of other animals. The best way to see the preserve is by floating quietly down the river, through the heart of it all. Throughout your adventure you will be surrounded by



towering mountains, hanging glaciers, lush forests, and fresh air—an adventure into the grandeur of Alaska!

Please note: Minimum age is 7 years. A buffet-style deli lunch is included.

Wilderness Kayak Experience



Approximately 4 hours • \$\$

Explore the stunning scenery of Haines and find out why so many people say there's no better way to see the beauty of Alaska! No experience is necessary—whatever your age or skill level, your expert guides makes this unforgettable experience easy. Mild weather and a variety of wildlife make Haines the ideal location for kayaking. With fresh- and saltwater destinations available, your



guide will choose the area where weather and wildlife trends are most favorable. You'll be outfitted with all the necessary gear and given a thorough introduction to kayaking. You'll be quickly at ease in your stable kayak, which is perfect for wildlife viewing and photography. You may see bald eagles, brown bears, seals, sea lions, moose or even a whale. A picnic-style lunch is served before you return to your ship.

Please note: Minimum age is 7 years. Guests over 6'6" tall or 300 lbs may not fit comfortably in the kayaks. Three-person kayaks are used. A deli-style lunch is included. Rain gear is provided when needed.

Eagle Preserve Wildlife River Adventure



Approximately 3¼ hours • \$\$

Experience the world famous Chilkat Bald Eagle Preserve, home to nesting bald eagles and the best moose habitat in the valley with more than 1,500 moose



sightings in the 2007 summer season. The Preserve is 48,000 acres of wilderness and today you will access the roadless portion of it in a specially-designed, flat-bottom riverboat, and travel miles of different channels of the Chilkat River. These boats are designed for this silt-laden river and the guide is easily able to hold against the current or turn around to give you the best photo opportunities. The animals are used to human presence, so bring your camera for your wilderness adventure in the heart of the Preserve. You will be surrounded by towering mountains, cascading waterfalls, hanging glaciers and unspoiled wilderness. The boats are uncovered for better wildlife viewing and photographic opportunities, but extra jackets and large waterproof, windproof lap blankets keep you warm and dry on your adventure. Join your hosts at their private property, with all amenities such as modern bathroom facilities. Sip a hot beverage with a snack in the heated pavilion or sit by the campfire and visit with your fellow adventurers.

Please note: Wildlife sightings are likely but are not guaranteed.

Sub-Alpine Mountain Explorer



Approximately 4 hours • \$\$

Take the wheel of a four-wheel-drive Kawasaki “Mule” and get ready for an Alaskan wilderness adventure on the Takshanuk Mountain Trail. Your journey begins with a guided motor coach transfer via historic Fort Seward (the first US military outpost in Alaska) along Lynn Canal to the base of the Takshanuk Trail. Here, you will be shown how to operate your automatic transmission, all-wheel-drive Kawasaki Mule, best described as a heavy-duty golf cart. The Mules are equipped with seat belts and offer easy accessibility. This tour allows adventurous guests, as well as semi-ambulatory guests or families with children, to experience the breathtaking views from an unspoiled Alaskan mountain wilderness. Beautiful waterfalls and crystal-clear creeks are just part of the natural scenery you’ll drive through on your way to the panoramic views at the 1,500-foot elevation sub-alpine meadows. On the way down, you’ll stop at an exclusive mountain lodge to enjoy a warm fire, stunning views and a gourmet meal before descending the rest of the trail.

Please note: Four guests or up to five family members can be accommodated per Mule. Restrooms are at the rest stop area. To drive the Mules you must be age 21 or over and must bring a driver’s license.

Glacier Point Wilderness Safari



Approximately 4½ hours • \$\$\$

This outstanding wilderness safari is a photographer’s paradise as you journey through deep fjords, lush rain forests, towering mountains, and colorful wildflowers, bringing you face-to-face with the majestic Davidson Glacier. Enjoy the fresh air and exercise; it is an experience you will never forget! Your tour begins at the dock in Haines with a 30-minute catamaran cruise through Alaska’s deepest fjord.

Watch for whales and sea lions en route to a remote beach landing at Glacier Point. A short, scenic drive by bus, and a fascinating ¼-mile walk take you to a place where the forest



suddenly opens up to reveal a breathtaking view of the glacier. Board a 31-foot canoe for a voyage of discovery to the face of the mighty blue glacier.

Please note: Participants need to be in good health and able to hike over uneven terrain. Dress warmly, bring a warm hat and gloves; wear comfortable walking shoes. Minimum age is 7 years. A box lunch will be provided.

“Guide’s Choice” Photo Discovery



Approximately 4 hours • \$\$

This tour provides a rare opportunity to focus on photographing the stunning scenery and wildlife of the Chilkat Valley. A limited number of participants will join a local, professional photographer on this four-hour journey. Your guide will select his favorite locations and provide you with ample time to set up the best shots. The emphasis is on taking time for excellent photography, rather than the photography being incidental. Even a simple “point and shoot” camera will work for this experience. Bring all your photography gadgets—you are assured space for your equipment in the transportation. Your guide will suggest shots, and discuss issues such as exposure, use of flash and depth of field. He is well versed in the wildlife and wildflowers at any given time of the season, and will ensure that you adhere to

ethical wildlife viewing protocols. With a small group, the guide has the flexibility to pick and choose locations that fit the group and the seasonal conditions. Some locations lend themselves to longer or shorter stops, depending on the light, wildlife activity and weather. You may end up photographing bears along the Chilkoot River, an explosion of shooting star wildflowers at Chilkat State Park, or young bald eagles exercising their wings at the edge of their nests. The theme is flexibility, rather than a rigid schedule. Mid-way through the tour, you will be treated to a snack of the local Dejon Delights smoked salmon.

Alaskan Wildlife Experience



Approximately 4 hours • \$\$

Ever wanted to pet a porcupine or feed a moose? Up-close wildlife encounters, intimate photo opportunities and stunning scenery are a part of the Alaskan Wildlife Experience. The tour begins with drive through the Chilkat Bald Eagle Preserve where your guide will acquaint you with the Native and natural history of the Chilkat Valley. Arriving at Kroschel Films Wildlife Center, you will be greeted by owner Steve Kroschel, an esteemed filmmaker who has spent a lifetime working with wild animals. He will guide you through this 60-acre park—home to more than 100 indigenous Alaskan animals. Many were orphaned, but now thrive in this protected habitat, retaining their independence while learning to trust humans. You'll enjoy amazing photo opportunities with twelve different species of Alaskan animals, including moose, wolves, Arctic fox, wolverines, lynx, reindeer and more. You'll also visit the American Bald Eagle Foundation interpretive center on the return drive to Haines and your ship.

Please note: This tour includes approximately ¼ mile of walking including one moderate slope. Wear sturdy walking shoes.



Nature & Wildlife Expedition by Day or by Twilight



Approximately 3 hours • \$\$

Travel with an engaging naturalist through the Valley of the Eagles to view Alaska's magnificent wildlife and enjoy breathtaking photo opportunities. Nestled between rugged glaciers and snow-capped mountains, the fertile Chilkoot Valley is home to generations of brown bears, bald eagles, mountain goats, river otters, spawning salmon, and numerous birds. Powerful spotting scopes afford close-up views of mountain goats in alpine meadows, bears along the river, and bald eagles in active nests. You can take photos through the scopes. Colorful harlequin ducks, marbled murrelets, loons, surf scooters, porpoises, seals and whales are among the seasonal highlights. Spotting scopes bring the action up close as bald eagles, gulls, ravens and ducks hover over fish in the river. On the shore of a picturesque lake, experience the lush understory beneath magnificent hemlock and spruce trees during a refreshing walk through an ancient muskeg. In August and September, twilight departures are added to this tour. Twilight departures offer a greater chance to spot brown bears. As the sun sets, bear families may descend on the river, leaving the cover of the forest to forage along the grassy banks. Your guide will point out the highlights of Haines and historic Fort Seward while driving back through downtown Haines.



Plases note: Wildlife sightings are not guaranteed. Current wildlife sighting updates are available at the Shore Excursions Office.

Haines Adventure Hike



Approximately 4 hours • \$\$

This spectacular hiking adventure immerses you in the incredible beauty of Southeast Alaska, where you will be surrounded with amazing mountain and ocean views. Your adventure begins with a fascinating town tour, including Fort Seward National Historic

Landmark and the parade grounds. Your guide will regale you with the interesting history and culture of the Haines area including the local gold rush and chronicles of the native Tlingits. Once at the trail head, you are off to enjoy the breathtaking countryside. The next 3½ hours will be spent surrounded by views of towering snow capped mountains and the Lynn Canal. You may see eagles, waterfowl, bears, moose, and more. Each departure is outfitted with several pairs of binoculars to maximize your opportunities to see up close the wildlife and the spectacular mountain and river scenery. Midway through your hike you will take a break to enjoy a delicious smoked salmon snack and to take in the magnificent views. This is a great family experience and kids are welcome. Bring your camera.

Please note: Exact hiking location may vary with weather conditions.

Valley of the Eagles Golf Adventure



Approximately 3½ hours • \$\$

The Valley of the Eagles Golf Links is one of the most scenic golf courses in the world, located directly along the banks of the Chilkat River with amazing views of the Cathedral Peaks, Chilkat Mountains, and the Lynn Canal. Beautiful blue glaciers and breathtaking waterfalls combine with the riverfront setting for an incredible visual experience. Abundant wildlife complements the scenery with frequent sightings of spawning salmon, bald eagles, moose, waterfowl, mink, otters, wolves, and songbirds. The course was ecologically designed to enhance the salmon streams,

and maintain the wetlands and vegetation that are native to the area. Your adventure begins with a short interpretive drive through historic Haines. At the golf course, you will be provided with clubs, pull-cart, balls, and shoes or overboots. The next 2½ hours will be spent enjoying the professionally designed nine-hole course. This is a great family experience and kids are welcome. A fun and interesting course layout meanders through the beautiful and wild Alaska landscape. At the end of the game you will be served a tasty snack with time to enjoy the views. Bring your camera.

Glacial Fjord by Bicycle



Approximately 3 hours • \$\$

Cruise along an ocean inlet, salmon-filled river and view a glacial lake by bicycle! A short and informative van ride takes you to the shore of Lutak Inlet where you begin your bike ride. Where the river meets the sea you cruise the flat paved road, watching for possible wildlife sightings including eagles, salmon, whales, sea lions and bears. Take in the gorgeous views across the emerald lake and inlet surrounded by glaciers, waterfalls, and jagged mountain peaks. This is a great tour to get some mild exercise and breath some pure Alaskan air.

Please note: The ride is approximately seven miles on a flat road with a short walk in the forest. Hybrid commuter-style bikes are used. A water bottle is provided and is available for purchase as a souvenir. Helmet use and waiver are required.



Freshwater Fishing on Chilkoot Lake



Approximately 4 hours • \$\$

Enjoy a scenic 20-minute drive to Chilkoot Lake, one of the most picturesque locations in southeast Alaska. Your fishing expedition begins aboard a 28-foot open-air pontoon boat (top can be put up if the weather demands it). Depending on the season, several varieties of wild stock salmon and dolly varden are the likely catches. Every fisher(wo)man is in control of his/her own spin-cast pole and tackle. There is a maximum of six guests per boat and the tour operator is the only company on the lake, so no crowds here! Your experienced guide assists with everything from new fishing methods to untangling your lines while you relax and absorb the grandeur of the surrounding snow-clad mountains.

Please note: This is a catch-and-release fishing excursion. Minimum age is 5 years. Alaska State law requires a valid 1-day fishing license, which may be purchased for us\$20 cash from your guide.

An Evening by Land & Sea



Approximately 2 hours • \$\$

The long Alaskan twilight is the perfect backdrop to combine a wildlife and natural history cruise with an exploration of the Haines area by motor coach. Explore the rich waters of Lynn Canal as you cruise via catamaran beneath the Chilkat and Coastal Mountain Ranges that rise 8,000 feet from sea level. Your crew is expert at spotting wildlife and placing you up close to see them in action. Near Seduction Point, watch for marine life such as humpback whales, sea lions and sea birds. Sail past intimate islands, coves, and the majestic Rainbow and Davidson Glaciers until you spot the Letnikof Cove beacon, site of a picturesque 19th-century salmon cannery. Here you will re-board the motor coach and tour the highlights of Haines. Enjoy the breathtaking beauty of the Chilkat Valley as you drive alongside the braided, glacial-fed river. Before returning to your ship you will tour Fort Seward and capture a photo from Picture Point.

Please note: A boxed dinner is included on the boat.



VISIT SKAGWAY

Add another port to your Alaska cruise itinerary. From Haines, you can visit Skagway, Home of the North Wind, one of Alaska's true pioneer, gold rush towns with a long and colorful history. The following tours depart Haines on a high-speed, 35-minute, fully narrated scenic ferry cruise on Lynn Canal—a daylight cruise along North America's longest and deepest fjord—to the town of Skagway. After participating in your shore excursion, re-board the ferry for the return trip to Haines, where your cruise ship will be waiting for your arrival.

Scenic Lynn Canal & Glacier Discovery by Helicopter (with Landing)



Approximately 6¼ hours • \$\$\$\$

Approximately 40-minute flight; 40 minutes on glacier

Enjoy the spectacular scenery of Lynn Canal as you travel by ferry to Skagway. Leave all traces of civilization behind and experience the infinite beauty of Alaska's remote glaciers. Lift off from the historic Skagway waterfront and head into a rugged region of sheer mountains, majestic valleys and massive glaciers. Jagged peaks towering over the Chilkat Glacier, cascading waterfalls, surrounding the Ferebee Glacier, or the spectacular "river of ice" known as the Meade Glacier, may be among the wonders you encounter. Flight routes and landing zones are selected daily to ensure that you receive the best that the area has to offer. Once you have reached your destination, you will



be given the rare opportunity to explore one of Mother Nature's greatest marvels. Enjoy the walking tour of a lifetime as your glacier guides answer your questions and explain the awesome forces at work. Back in Skagway, re-board the ferry for the trip back to Haines.

Please note: Glacier boots are provided. Guests weighing 250 lbs or more will pay an additional surcharge over the published fare. Time spent on the glacier is approximate and may vary due to weather and glacial conditions. See flightseeing information on page 11.

White Pass Summit Scenic Railway



Approximately 5½ hours • \$\$\$

Begin your journey via ferry from Haines to Skagway, where you will take an unforgettable round-trip journey aboard the White Pass & Yukon Route Railroad. Against all odds, this iron trail was built through some of the North's most ruggedly beautiful terrain and 100 years later is still in operation. Ride in a comfortable replica or restored car to the summit of the White Pass, through two tunnels, over trestles, and through remote valleys. Pass Bridal Veil Falls,



Inspiration Point and Dead Horse Gulch as your guide announces all the points of interest and tells the story of the Klondike Gold Rush. Reaching the White Pass summit at 2,865 feet, a seat exchange will occur allowing everyone to experience the excellent views during this three-hour round-trip rail journey. This narrow-gauge railroad is an International Historic Civil Engineering Landmark. It shares this honor with the Panama Canal, the Eiffel Tower and the Statue of Liberty, and is truly a World Wonder.

Please note: Your tour includes a box lunch and transfers to and from the train. Restrooms are located on each train car. You will not get off the train during the tour. Due to Alaska's extreme tides, there may be a steep ramp to climb at the floating ferry dock.



Historic Skagway, Fjord Cruise & Brothel Museum Experience



Approximately 5¼ hours • \$\$

The tour begins as you board the ferry for a scenic 45-minute cruise up the final stretches of the majestic Inside Passage. Look for waterfalls, whales and other sea life en route to historic Skagway. Enjoy the sights and sounds of this Gold Rush-era town as your guide imparts lively tales, tall and true. Visit the Gold Rush Cemetery and experience the sweeping views from Skagway's overlook. Continue your narrated tour through the streets of downtown Skagway, culminating at the world-famous Red Onion Saloon. The salon boasts a celebrated brothel museum, where you will be greeted by a lavishly dressed madam who will adorn you with a souvenir garter. Enjoy Alaskan Amber beer, wine, champagne, root beer, assorted desserts and other snacks as you are entertained by the incredible stories of the ladies who used to work these historic rooms. You will see the silver dress worn by one of the Red Onion's early madams, the original red lantern and other artifacts left behind by the "soiled doves." You may even catch a glimpse of Lydia, the Red Onion's resident ghost! Afterwards, shop and stroll Skagway's bustling boardwalks, rub shoulders with the local "nightlife." A motor coach will transfer you back to the ferry for a relaxing evening cruise back to Haines.

White Pass Rail, Klondike Highway & Gold Camp Adventure



Approximately 7 - 8 hours • \$\$\$

Transfer to Skagway by ferry and experience an unforgettable journey along the eastern side of White Pass aboard the world-famous narrow gauge White Pass & Yukon Route Railroad, built more than 100 years ago through some of the North's most rugged terrain. Board a comfortable, replica or restored car and retrace the original





route beyond the summit of White Pass at 2,865 feet through breathtaking scenery. Upon reaching Fraser, British Columbia, you

will board a motor coach for the journey down the west side of the White Pass canyon as you hear about Pitchfork Falls and Tormented Valley. Then, stop at historic Liarsville, a gold rush trail camp, to view cabins and tents once used as a bakery, laundry, saloon and bordello. Try your hand at gold panning—you're guaranteed to find some. Enjoy a snack of hot cider and cookies, and have your photo taken with a husky, or do some shopping before returning to Haines by ferry.

Please note: As this adventure crosses the US/Canadian border, you must bring the following identification with you: US & Canadian citizens must carry a passport, or valid driver's license and birth certificate, and carry their ship ID. All other nationalities must have a valid passport, visa and ship ID. A box lunch is included.

Tales of the Trail: Skagway & the Trail of '98



Approximately 7 - 7¾ hours • \$\$

Gold, riches, infamous characters, tall tales, turn-of-the-century buildings, two-ton bronze sculptures, fjords, glaciers, and spectacular scenery are all included in this tour. Depart the town of Haines by high-speed ferry headed to the gold rush town of Skagway. From a comfortable motor coach, begin your experience in Skagway's historic downtown area. View scenic streets lined with wooden boardwalks and century-old boomtown buildings. The first stop is the historical Skagway Gold Rush Cemetery to hear the tales of those that inhabited Skagway a century ago and forged a town that was once described as "little better than hell on Earth." Next, you're off to the view point above Skagway, 200 feet off the valley floor, where you can pose for your keepsake photo with Skagway in the background. Before you're let loose to explore the town of Skagway on your own, your coach will stop at the Skagway Sculpture Park. Here you

will be able to view more than one million dollars in bronze statutes, from a life size Alaskan grizzly, to a 1.6 scale horse (in tribute to Dead Horse Gulch) and the three-ton *Dream Chaser*. This 11-foot wide, 30-foot long, and 20-foot high Austin Deuel sculpture magnificently depicts one prospector's courageous journey into the Klondike Gold Fields. After your Skagway shopping experience, retrace the steps of the stamperders, driving to 3,292 feet above sea level to the famed White Pass Summit. You'll stop along the way to photograph waterfalls and the original Dead Horse Gulch. Marvel at the engineering feat of the White Pass & Yukon Route railway and revel in the natural beauty of the surrounding mountain peaks, waterfalls and glaciers. The ferry will return you to Haines.



Please note: A box lunch is included. Free time in Skagway varies. As this adventure crosses the US/Canadian border, you must bring the following identification with you: US & Canadian citizens must carry a passport, or valid driver's license and birth certificate, and carry their ship ID. All other nationalities must have a valid passport, visa and ship ID.





Juneau, Alaska

Glacier Flightseeing by Floatplane



Approximately 1¼ hours • \$\$\$

Approximately 40-minute flight; all window seats

The grandeur of Alaska will thrill and delight you on this multi-glacier, unforgettable flightseeing tour. Your floatplane flightseeing adventure begins as your aircraft departs from

Juneau's waterfront to fly past waterfalls and lush green rain forests en route to five distinctly different majestic glaciers of the 1,500-square-mile Juneau Icefield. Soar over the deep crevasses



and azure blue meltwater pools of the Norris, Hole-In-The-Wall, East and West Twin Glaciers, plus the mighty Taku. Of the 36 named glaciers of the Juneau Icefield, the Taku Glacier, five miles wide at its base, is the only glacier that is actually advancing, not retreating. The views and photo opportunities are terrific. Rain or shine, bring your camera to capture the magical memories this trip is sure to provide.

Please note: All participants enjoy a window seat for enhanced viewing and a headset for hearing the narration. See flightseeing information on page 11.

Taku Glacier Lodge Feast & Flight by Floatplane



Approximately 3½ hours • \$\$\$\$

Approximately 50 mins total flight-time; all window seats

You're in for the journey of a lifetime with glacier flightseeing, a remote log lodge, wilderness trails, wildlife, and a feast of king salmon. Fly in a classic floatplane over five breathtaking



FLIGHTSEEING

Fly-Out

Fly Fishing Adventure



Approximately 5 hours • \$\$\$\$

Approximately 3 hours fishing; 40-50 mins total flight-time

Untouched Alaskan wilderness awaits you on this premier fly fishing quest. Combine the highlights of Southeast Alaska with classic float planes, world-renowned fishing in remote waters, experienced local guides and abundant wildlife in a pristine wilderness setting. This foremost guiding service caters to the first timer with hands-on instruction. The experienced fly caster will enjoy the challenge of Alaskan fishing and the guide interaction. All fishing is done on an eco-conscious catch-and-release basis. Fishing species include cutthroat trout, dolly varden and various salmon species. All first class gear and equipment is provided, and an Alaskan smoked salmon snack and beverages are included. The only way to experience Alaskan fishing at its finest is to experience the heart of the Alaskan wilderness—something road access simply doesn't allow. Your guide will choose the stream or river fishing location based on current fishing reports, weather and scenic/wildlife variables.

Whether you are a seasoned fly fisherman, a photographer, or a discriminating traveler looking for the true wilderness experience, this is a once in a lifetime adventure.

Please note: Fishing is catch-and-release only. Alaska State law requires a valid 1-day fishing license, which may be purchased for US\$20 cash from your guide. See fishing information on page 10 and flightseeing information on page 11. To fit the chest waders, the maximum shoe size is 15 and the minimum shoe size is 4. Minimum age is 8 years.



glaciers of the Juneau Icefield, as well as deep blue crevasses, snow-capped mountains, cascading waterfalls and lush forests. The Taku River will be your “runway” as you land at the Historic Taku Lodge, built in 1923 and located across the river from the Taku Glacier in the heart of the Tongass National Forest. Savor a feast of baked beans, coleslaw, pioneer fruit compote, fresh herb biscuits and sourdough bread with grilled-to-perfection Alaska salmon. Russian tea, coffee or iced tea and lemonade chilled with glacier ice and special-recipe ginger cookies complete the meal. Beer and wine are available at an additional charge. Bears often visit the barbecue pit area in search of leftovers! Before your flight back to Juneau, take a guided nature walk or soak in the serenity of a place barely touched by time.

Please note: All participants enjoy a window seat for enhanced viewing and a headset for hearing the narration. See flightseeing information on page 11.

Mendenhall Glacier by Helicopter & Guided Walk



Approximately 2¼ hours • \$\$\$\$

Approximately 25 mins in helicopter; 20 - 25 mins on glacier

Travel into the Ice Age of the Mendenhall Glacier by helicopter



to enjoy breathtaking vistas of rain forests, alpine ridges, and mountain peaks, as well as icy spires, deep blue crevasses and meltwater pools. Descending towards the landing site, you may fly past the Mendenhall Towers—rock sentinels that soar to more than 7,000 feet. Explore the glacier’s surface on foot with your guide

before returning to Juneau. Bring binoculars and a camera.

Please note: Guests weighing 250 lbs or more will pay an additional surcharge over the published fare. Glacier boots are provided. See flightseeing information on page 11.

Dog Sledding on the Mendenhall Glacier by Helicopter



Approximately 2¾ hours • \$\$\$\$

Approximately 30 mins in helicopter; 60 mins at dog camp including 20-25 mins sledding

When you visit Southeast Alaska and take a glacier helicopter tour with a dogsled ride, you get an unforgettable experience. Fly over lush rain forest, deep blue crevasses and glacier-carved peaks as



your pilot gives you a spectacular flightseeing tour to the dogsled camp on Mendenhall Glacier. A professional musher and Alaskan sled dogs will allow you to experience the same feeling as if you were on the famous Alaska 1,000-mile Iditarod Race as you take in the awe inspiring scenery. You will have time to talk with the mushers or take pictures with the dogs and puppies before your helicopter takes you back to the heliport and civilization. Don’t miss out on this truly Alaskan experience.

Please note: Warm clothing and sunglasses are recommended. Glacier boots are provided. Guests weighing 250 lbs or more will pay an additional surcharge over the published fare. Time spent on the glacier is approximate and may vary due to weather and glacial conditions. See flightseeing information on page 11.

Dog Sled & Four Glacier Adventure by Helicopter



Approximately 2¾ hours • \$\$\$\$

Approximately 25 mins flightseeing; 1¼ hours at dog sled camp

Enjoy a combination of Alaska’s most highly desirable activities—helicopter flightseeing, a glacier landing, and a dog sled ride! Fly over the massive Juneau Icefield and see up close the “advancing” Taku Glacier, “cascading” Hole-in-the-Wall Glacier, and either the mysterious “floating” Dead Branch Glacier or the “river-like” East Twin Glacier before landing on the Norris



Glacier, home of the exclusive dog mushing camp. The highlight of your tour is a visit to the dog sled camp. Your guide takes you on a dog sled ride over the snow-covered glacier and tells you about the 1,000-mile Iditarod Race from Anchorage to Nome. Continue on your flightseeing trip soaring over the glacial landscape. Watch

for bears, moose and mountain goats below.

Please note: Bring sunglasses and dress warmly. Glacier boots are provided. Guests weighing 250 lbs or more will pay an additional surcharge over the published fare. Time spent on the glacier is approximate and may vary due to weather and glacial conditions. See flightseeing information on page 11.

“Pilot’s Choice” Glacier Explorer by Helicopter (with two Landings)



Approximately 2¾ hours • \$\$\$\$
 Approximately 50 mins in helicopter; 2 x 15-minute landings

Marvel at vistas seen by few—high alpine lakes, “icefalls” hanging from sheer cliffs, and some of the most remote peaks and glaciers in the Juneau Icefield. Your pilot will create the best



possible flightseeing based on the weather and glacier conditions. You’ll land in two different locations, where you will continue the tour on foot! During these two landings, you will learn about the environmental and geological processes at work, creating moraines, crevasses, seracs, and the amazing glaciers themselves.

Please note: Glacier boots are provided. Guests weighing 250 lbs or

more will pay an additional surcharge over the published fare. Time spent on the glacier is approximate and may vary due to weather and glacial conditions. See flightseeing information on page 11.

Four Glacier Adventure by Helicopter (with Landing)



Approximately 2 hours • \$\$\$\$
 Approximately 40-45 mins in helicopter; 15-20 mins on glacier

See four of Alaska’s most spectacular glaciers as your pilot flies over the ice spires and pinnacles of the “cascading” Hole-in-the-Wall Glacier, the “advancing” Taku Glacier, the “retreating”

Norris Glacier and either the mysterious “floating” Dead Branch Glacier or the “river-like” East Twin Glacier. Land



on a remote glacier to step out and explore the ancient landscape with your pilot as your guide. Peer down into a crevasse and look for a glacial stream. On the return trip, watch for bears, mountain goats and moose.

Please note: This tour is wheelchair accessible—see the Shore Excursions Office on board. Glacier boots are provided. Guests weighing 250 lbs or more will pay an additional surcharge over the published fare. Time spent on the glacier is approximate and may vary due to weather and glacial conditions. See flightseeing information on page 11.





The tours on pages 37 and 38 offer the unique opportunity to enjoy helicopter flightseeing and then to walk or trek around on a glacier's surface, like a true mountaineer. We offer three levels of trekking on the glaciers of the Juneau Icefield. The trek levels vary by length of time on the glacier and the amount of physical activity involved. Choose an experience based on your agility level. Each trek includes appropriate outerwear and mountaineering gear for the type of activity, and a 30- to 35-minute scenic helicopter flight to the glacier. Trips are conducted in small groups to facilitate an informative and in-depth glacier experience. **NO EXPERIENCE IS NECESSARY.** Depart from the heliport for one of the following three adventures and please see page 11 for more flightseeing information:

Exclusive to Juneau:

Ice Trekking Options on the Juneau Icefield

Level 1:

Helicopter Flightseeing & Glacier Walkabout



Approximately 3¼ hours • \$\$\$\$

Approximately 30 - 35 mins in helicopter; 1 hour walking on the glacier

This trip is a non-strenuous, one-hour interpretive walk. Your guide provides detailed explanations of the glacier environment, the surrounding area, and teaches proper use of the mountaineering equipment that is provided. There is plenty of time for photo opportunities. The amount of walking is moderate, over relatively flat to rolling terrain. Your pilot will choose the glacier landing site for the day.

Please note: Rain- and windproof outerwear, boots, and gloves are provided. Minimum age is 8 years. Guests weighing 250 lbs or more will pay an additional surcharge over the published fare. See flightseeing information on page 11.

Level 2:

Helicopter Flightseeing & Glacier Trek



Approximately 4¼ hours • \$\$\$\$

Approximately 30 - 35 mins in helicopter; 2 hours hiking on glacier

The trek is a two-hour hike through a glacial icescape. There is an early emphasis on learning the proper use of the mountaineering gear (rain- and windproof outerwear, gloves, boots, ice axe, crampons, harness, helmet) and understanding the glacier features and hazards so that remote areas of the glacier can be accessed during the trek. The trek includes more physical activity than the Level 1 Walkabout, interspersed



with detailed explanations of the glacier environment and surrounding area. Participants should be comfortable hiking for two hours over uneven and sometimes steep terrain. This trek is both adventurous and easy—no experience required. Bring your camera!

Please note: Guests must be in good physical condition and able to walk two miles over varied terrain, although two miles may not be covered in this tour. Minimum age is 12 years. Guests weighing 250 lbs or more will pay an additional surcharge over the published fare. See flightseeing information on page 11.

Level 3: Helicopter Flightseeing & Extended Glacier Trek



Approximately 5¼ hours • \$\$\$\$

Approximately 30 - 35 mins in helicopter; 3 hours hiking and climbing on the glacier

This trek is an Alaskan glacier adventure that includes three hours of hiking and climbing over the rugged terrain of the glacier. Upon landing, the guide teaches the basics of glacier travel and then leads your group on an exploration of the most



pristine and remote areas of the glacier. Opportunities for adventure photos abound as you are introduced to and practice basic climbing and rope techniques enabling you to safely climb and descend ice walls. The amount of walking is extensive and often on steep terrain with some technical climbing. All outerwear and mountaineering gear is

provided. No experience is required, but you should be in good physical condition and bring your spirit of adventure!

Please note: Guests must be in good physical condition and able to walk 3 - 4 miles over varied terrain, although 3 - 4 miles may not be covered in this tour. Minimum age is 16 years. Guests weighing 250 lbs or more will pay an additional surcharge over the published fare. See flightseeing information on page 11.



SIGHTSEEING

Juneau by Private Hummer



Approximately 4 or 8 hours • \$\$\$\$



This tour begins on the Juneau dock and is customizable at any point along the way. This tour is a private car service with a twist—you will have a Hummer H2 (a rugged, exciting vehicle modeled on the famous military HumVee) and knowledgeable tour guide exclusively at your service! Consider a private guided wilderness hike (1½ to 2 hours) to learn about old-growth rain forests. Perhaps follow that up with an exclusive Douglas Island Sea Kayaking Adventure (2¼ hours). A city and Mendenhall Glacier tour (1½ hours) offers views of Mendenhall Glacier from a spectacular vantage point. At the Forest Service Visitor Center you'll have a close up view of the glacier, 1½ miles wide and 150 feet high. You could choose a tour to the Shrine of St. Therese (3 hours), the Patroness of Alaska, located in a remote and scenic location. Or how about a historic gold history and gold panning adventure (1 hour)? You'll be taken to the very location where Joe Juneau and Richard Harris discovered gold more than 100 years ago and have fun panning for gold—keep all the gold you find! Other options include the Gold Creek Salmon Bake (1½ hours) in the lush foliage of the Southeast Alaska rain forest, with succulent Alaskan-caught wild salmon cooked over an open fire. Stroll up to a waterfall and view the remnants of an old mine. Roast marshmallows while enjoying live musical entertainment.

Please note: Selection of activities is made on board at the Shore Excursions office. There is no additional charge for participating in the suggested activities. Combining some of these options may result in duration of time less than the sum of the individual times noted. Please see pages 5 - 6 for more details. Meal at the salmon bake is included. Beer and wine are available at an additional charge. Maximum capacity is 4 guests.

Whale Watching & Wildlife Quest with Mendenhall Glacier or Alaska Salmon Bake Options

Embark on a cruise that guarantees you'll see whales and other Alaskan wildlife! Enjoy a motor coach ride to scenic Auke Bay and board a water-jet-powered catamaran specifically designed for daytime or evening wildlife viewing. Relax in the warm, comfortable cabin, surrounded by large windows, as you ply the



island-studded waters of Stephen's Passage. This area is world-renowned as a favored summer feeding ground for humpback whales. Once whales have been sighted, your captain will gently maneuver the vessel to allow exceptional viewing and photo opportunities as graceful ocean giants slowly arc their massive tail flukes into the air. Be sure to bring a

warm jacket to wear on the topside observation deck; the whales are often close enough to hear them breathe. An on-board naturalist will explain the behavior and habitat of wildlife you may encounter, including humpback and killer whales, Steller sea lions, Dall's porpoise, harbor seals, bald eagles and Sitka blacktail deer. The operators of this tour guarantee you will see a whale. If not, you'll receive a us\$100 cash refund (\$50 refund per child) as you disembark. In the past ten years, whales have been sighted on every tour! Bring a warm, rainproof jacket and your camera. The vessel is restroom equipped. Choose the Whale Watching & Wildlife Quest alone (A), or choose one of the other options (B-E) listed below:

A. Whale Watching & Wildlife Quest



Approximately 4 hours • \$\$
Approximately 3 hours on boat

For those short on time, but still looking for big adventure, the Whale Watching & Wildlife Quest described above is a great way to maximize your viewing of Alaska's marine wildlife.

B. Mendenhall Glacier & Whale Quest



Approximately 5¼ hours • \$\$
Approximately 3 hours on boat; 1 hour at the glacier's visitor center

Before or after your Whale Watching & Wildlife Quest as described above, experience another of Alaska's premier attractions. Take a narrated motor coach tour to view and photograph Alaska's most famous river of ice, the Mendenhall Glacier. At the newly renovated Visitor Center, talk with Forest Service interpreters and, through interactive exhibits, learn about the landscape-carving force of glacial ice. Stroll the glacier-view path, then back aboard the motor coach for the transfer to the ship. *Please note: This excursion is not recommended for guests using a wheelchair due to (dis)embarkation of transportation equipment.*

C. Evening Whale Watching Quest



Approximately 3½ hours • \$\$
Approximately 2½ hours on boat
Available only on ships staying in Juneau for the evening

Enjoy the Whale Watching & Wildlife Quest as described above in the peaceful ambiance of Alaska's long twilight, as you are treated to a delicious variety of appetizers including a baron of beef, reindeer sausage, smoked salmon, cheese and vegetable trays, hot shrimp dip, dessert bars, pastries and truffles. Tea, coffee and cocoa will be served. Beer, wine and sodas are available at an additional charge.

D. Mendenhall Glacier & Evening Whale Quest



Approximately 4¾ hours • \$\$\$
Approximately 2½ hours on boat; 1 hour at the glacier's visitor center

First, a narrated motor coach tour takes you to view and photograph Alaska's most famous glacier—the Mendenhall. At the newly-renovated Visitor Center you'll have the opportunity to visit with Forest Service Interpreters



and, through interactive exhibits, appreciate the landscape-carving force of glacial ice. Back aboard the motor coach you'll continue to Auke Bay and next, enjoy the Evening Whale Watching Quest as described above.

Please note: This excursion is not recommended for guests using a wheelchair due to (dis)embarkation of transportation equipment.

E. Best of Juneau!

Whale Watching Quest, Mendenhall Glacier & Alaska Salmon Bake



Approximately 6¼ hours • \$\$\$

Approximately 3 hours on boat, 1 hour at glacier, 1 hour at salmon bake

See it all on this ultimate combination tour—you'll start with a visit to the Mendenhall Glacier Visitor Center to see Alaska's best-known river of ice, talk with Forest Service Interpreters and, through interactive exhibits, learn about the awesome force of glaciers, then you'll enjoy the Whale Watching & Wildlife Quest described above. Beverages and snacks are served on the cruise. Finally, you're off to an outdoor salmon bake at Salmon Creek as noted in the "Alaska Salmon Bake" below.

Please note: Restrooms are available at all venues. This tour is not suitable for wheelchair access due to number of stops requiring (dis)embarkation of transportation equipment and uneven terrain.

Alaska Salmon Bake



Approximately 1½ - 2 hours • \$

An Alaskan feast, this salmon bake features Alaskan-caught wild salmon grilled over an open alder wood fire. Also enjoy



Cheechako baked chicken, Bonanza barbecued ribs, Chilkoot baked beans, wild-rice pilaf, a variety of fresh salads, corn bread and lemonade, coffee or tea. (Beer and wine are available for an additional charge.) Dine beside Salmon Creek in Southeast Alaska's rain forest and listen to a local musician—a translucent roof protects you rain or shine. After dining, toast marshmallows over a

crackling campfire and walk to view the beautiful Salmon Creek waterfall. Remnants of the historic Wagner Mine are evident here. Return to the ship by shuttle bus.

Please note: Tour not suitable for wheelchairs due to uneven terrain at the salmon bake. Bring a warm jacket. Restrooms are available.

Mendenhall Glacier & Alaska Salmon Bake



Approximately 3 hours • \$\$

Travel through Juneau's picturesque downtown to the mighty Mendenhall Glacier, a moving river of ice with rugged crevasses.

Stroll the many walkways or enjoy some time at the Visitor Center, then you'll board your motor coach for your tour to the



traditional Alaskan salmon bake at Salmon Creek described above. Return to your ship by shuttle bus.

Please note: This tour is not suitable for wheelchairs due to uneven terrain at the salmon bake.

Gold Panning Adventure & Alaska Salmon Bake



Approximately 3 hours • \$\$

Re-live Juneau's gold rush history by panning for gold, and then enjoy a delicious salmon bake at Salmon Creek! A costumed prospector will narrate your drive to historic Last Chance Basin, to view the remains of the Alaska-Juneau gold mine. Learn how to pan for gold and keep everything you find. Continue to the salmon bake as described above for a delicious Alaska taste treat, returning to the ship by shuttle when you're ready.

Please note: This tour is not suitable for wheelchairs due to the uneven terrain at Last Chance Basin and the salmon bake.

Historic Gold Panning Adventure



Approximately 1½ hours • \$



Re-live Juneau's gold rush history and pan for gold at Last Chance Basin, site of the original gold strike in 1880. Your bus will trace the route taken by Joe Juneau and Richard Harris in their search for gold over 100 years ago. Near the famous Alaska-Juneau gold mine, you will have hands-on experience panning for gold in Gold Creek. Keep all the gold you find!

Grand Tour of Juneau: City, Hatchery, Glacier & Gardens



Approximately 5½ hours • \$\$

At Glacier Gardens, tour a beautiful atrium of hanging baskets in full bloom. Forest, landscaped gardens and a cascading stream surround the atrium. Take a covered shuttle ride to the top of the mountain via the rain forest, with stops along the way allowing time for discussion of the many varieties of flora and fauna on display. Next you are off to Mendenhall Glacier. Stroll the walkways to the U.S. Forest Service Visitor Center to see the glaciology exhibits and film. Then, a short walk along one of the nature trails brings you to within one mile of the face of the glacier for an excellent photo opportunity. Finally, a scenic drive takes you past the University of Alaska's southeast campus, Auke Lake and to Juneau's Macaulay Salmon Hatchery and Visitor



Center. The facility offers interpretive displays on the life cycle of salmon. View live adult salmon and more than 100 species of Alaskan marine life.

Mendenhall Glacier & Gardens



Approximately 3½ hours • \$\$

Combine a Glacier Gardens rain forest adventure with a tour to the mighty Mendenhall Glacier! Nestled alongside Thunder Mountain is a stunning combination of hanging gardens, flowered pathways and temperate rain forest—Glacier Gardens. Your guide will escort you through the atrium surrounded by forest, landscaped gardens and a cascading stream. A covered shuttle will take you into the rain forest with frequent stops for admiring the flora and fauna. Enjoy the scenic overlook at the top of the mountain, before heading back down the trail. Next you will visit the mighty Mendenhall Glacier. Stroll the walkways to the Visitor Center's glaciology exhibits, or take a short walk along one of the nature trails bringing you to within one mile of the face of the glacier for an excellent photo opportunity.



Juneau Highlights: City, Glacier & Hatchery



Approximately 3 hours • \$

This tour offers an excellent overview of the state's capital city and its scenic attractions, including Mendenhall Glacier. By motor coach you'll take a guided tour through Juneau's picturesque downtown and past the Capitol building. View the mighty Mendenhall Glacier, a river of ice with rugged crevasses and a distinctive blue color, which appears deceptively close because of its immense size. At the U.S. Forest Service Visitor Center, take in the glaciology exhibits or listen to an interpretive talk with a Forest Service Ranger. A short walk along a nature trail brings you to within one mile of the face of the glacier. You'll also drive past the University of Alaska's southeast campus, Auke Lake and to Juneau's Macaulay Salmon Hatchery which offers interpretive displays on the life cycle of salmon and different hatchery operations. Salt water aquariums enable close-up viewing of live adult salmon and more than 100 other species of Alaskan marine life.

Mt. Roberts Tramway



5-minute ride each way • \$

Age 5 and under ride free

We recommend at least 1 hour at the top of Mt. Roberts

Soar by tramway to 1,800 feet above the city to take in one of the most expansive and beautiful views in Alaska, from the Chilkat



Mountains to the north, down Stephens Passage, over to Douglas Island, and into Silver Bow Basin where gold was discovered in 1880. Once at the top of Mt. Roberts, you will find that the Nature Center is the starting point of an extensive trail system including bear-viewing platforms and a live bald eagle exhibit. The Mountain House has a theater, restaurant, bar, several select gift shops and Native artists working on

fossilized ivory or silver carvings, making dolls, sewing garments, beading or creating large totem poles out of cedar logs.

Please note: Tickets allow unlimited rides throughout the day and include viewing the award winning Tlingit film "Seeing Daylight." The Mt. Roberts Tramway is an excellent choice to combine with any other tour for a full overview of Juneau and vicinity.

Underground Juneau Gold!



Approximately 3¼ hours • \$\$

Re-live Juneau's mining heritage on this tour of the remains of what was once the world's largest producing gold mill. Constructed in 1913, the Alaska Gastineau Mill was designed to crush and recover gold from 6,000 tons of rock per day. After a short ride to the site of the mill ruins, follow the path of the ore to the railroad superintendent's house. Here, enjoy a display of different mining techniques, equipment and the view of Gastineau Channel below. Venture underground into the conveyer tunnel through which crushed ore was transported to the mill below. Don a hard hat and proceed along a boardwalk into the 360-foot long tunnel carved into the mountainside.



Inside, experienced miners will demonstrate mining equipment and give you a feel for the mining lifestyle. Return to the mill site where you can pan for gold and garnets from the tailings of the mine. Paydirt is guaranteed and you can keep all you find! Your driver updates you on the mining industry's current role in Juneau as you return to town.

Please note: Dress warmly as the temperature inside the mine tunnel is quite cool.



ADVENTURE

Photo Safari by Land & Sea



Approximately 4¾ hours • \$\$\$

Capture everything from glaciers to whales on this excursion that features a naturalist photography guide. You will travel in a media-equipped shuttle bus and aboard a customized safari boat as your guide provides expert interpretation while also sharing tips and techniques to enhance your images. By land, at Mendenhall Glacier, you will be taken along the secluded Moraine Ecology Trail. This gentle walk leads to beaver dams, salmon streams and remarkable glacier panoramas—sites to inspire your creative photography. By sea, board a covered



exploration vessel for an unforgettable journey through the pristine waterways of Stephens Passage. Large panel windows open to give you unrestricted views, while your captain safely maneuvers to give you the best angle on the shot. This excursion has never had a trip without a star-studded cast—often including humpback whales, sea lions, orcas, harbor seals, porcupines, eagles, salmon or even black bears. See more of Alaska’s natural wonders as you strive to capture that “magical moment” in the medium that’s worth a thousand words.

Please note: Children 12 and under receive a free digital camera. Group size is limited to 14 participants to ensure a comfortable and interactive atmosphere. Walking distance is limited to approximately ½ mile on level, improved trails. Rain gear, bottled water and a granola snack are included. Tour operates in all weather conditions.

Mendenhall River Float Trip



Approximately 3½ - 4 hours • \$\$

This exciting, yet gentle, introduction to rafting begins with a drive to Mendenhall Lake where you’ll have a view of the glacier which is actually 1½ miles wide and 150 feet high at its face. Suit up with rain gear, life jacket and rubber boots. Each raft carries 8



- 12 people and is rowed by an experienced guide. Paddle rafts are available for the more experienced and adventuresome. Cross

Mendenhall Lake in search of icebergs then float down the river that winds its way through a park and beside some riverfront homes. Look for the hanging glaciers and towering peaks of the Juneau Icefield in the hinterland. You will encounter stretches of moderate rapids that add a little excitement to the trip (seasonal fluctuations in the water level affect the size of white water). Ashore, you will enjoy an Alaskan-style snack and return to town by coach. No prior experience is necessary—just bring an adventurous spirit!

Please note: Tour will operate in all weather conditions. Bring warm clothing, hat, gloves and an extra pair of socks. Guests must

weigh at least 40 pounds to fit into the life jackets required for participation. Cameras should be waterproof and disposable.

Douglas Island Sea Kayaking



Approximately 3½ hours • \$\$

Enjoy a narrated transfer to North Douglas Island for scenic views of the glaciers of the Juneau Icefield. You’ll be outfitted in life jackets and rain gear and your guide will teach you about paddling techniques. You’ll then board a two-person kayak for a sense of how the famed Aleut Indians traveled the coastal waterways of Alaska. As you paddle, keep your eyes open for any wildlife in the area, especially marine mammals and a variety of bird life. Paddle for 1½ - 2 hours, then enjoy a beverage and snack before transferring back to town.



Please note: Tour will operate in all weather conditions; wear warm clothing. Rain gear and life jackets provided. Minimum weight is 40 lbs; maximum weight is 260 lbs. Minimum age is 6 years.

Mendenhall Lake Native Canoe Adventure



Approximately 3½ - 4 hours • \$\$

Paddle across an iceberg-studded lake to the face of the dramatic Mendenhall Glacier in a 12-person, traditional, Native-style canoe. Navigate the shimmering waters of Mendenhall Lake as



your guide shares traditional legends of the time when the region’s first people, the Tlingit, traversed

the waters of Southeast Alaska. Land on the shore near Nugget Falls for a snack, then paddle back across the lake. This is an exhilarating outdoor adventure and participatory trip and some effort is required; however, paddling experience is not necessary.

Please note: Dress warmly and bring extra socks. Minimum weight is 40 lbs. Waterproof rain gear is provided.

“Guide’s Choice” Adventure Hike



Approximately 4½ hours • \$\$

Hike is approximately 4 - 6 miles

With more miles of trails than roads, Juneau is known as the place for an adventurous day hike! The trail is chosen to best suit the group’s ability and the day’s hiking conditions. You may hike high above the Mendenhall Glacier or on a path designated as a “National Historic Trail.” Witness cascading waterfalls, serene meadows, or quiet forest glens—just a few of the treasured places



that can be reached only on foot. Your experienced guide will provide you with stories and insights on this last great temperate forest, its fascinating

wildlife, glacially carved landscapes and lush foliage. Expect a refreshing outing with many opportunities for photography and lasting memories of Alaska.

Please note: This tour is suited to those who love to hike, and who are physically able to hike for 3½ hours, between four and six miles, with an elevation gain of 600 to 1,000 feet. Rain poncho, belt pack, bottled water and granola snack are provided. Wear sturdy shoes suitable for hiking and dress warmly in layers as the tour operates in all weather conditions.

Rain Forest & Sea Coast Nature Walk



Approximately 3 hours • \$\$

Walk covers approximately 1½ miles; 2 hours walking

Unlock the secrets of the forest and the intertidal shoreline while exploring one of Southeast Alaska’s most tranquil and peaceful trails. This enlightening eco-tour is ideally suited to those who appreciate the beauty and complexity of nature, and are able to walk a gentle pace for up to 1½ miles. Immerse yourself in the splendor of the land as you wind beneath a storied old-growth canopy, along a vintage wetland and out to a secluded beach. Even if you are not an avid walker, this is your opportunity to break from the hustle and bustle and take home a special “peace” of Alaska.

Please note: Tour includes water, walking sticks, rain ponchos and a free copy of The Alaska Rain Forest publication. Wear sturdy shoes suitable for trail walking and dress warmly in layers as the tour operates in all weather conditions.

Juneau Sportfishing



Approximately 5 hours • \$\$\$

Approximately 4 hours in boat

The protected waters of the Inside Passage near Juneau are home to bountiful populations of salmon. Join a charter boat operated by a Coast Guard-licensed captain for a spectacular fishing excursion. Depending on run timing, you will be pursuing king, chum, pink or silver salmon. Fish processing and shipment home are available at an additional cost. Along with great fishing opportunities, your outing will provide excellent scenery and a chance to view and photograph marine mammals and bird life.

Please note: Alaska State law requires a valid 1-day fishing license, which may be purchased for us\$20 cash from your



fishing boat captain along with a us\$10 cash king salmon stamp (during king season May-June). Light tackle fishing equipment, bait, tackle, rain gear, snacks and beverages are provided. Trolling involves using a downrigger to lower the bait to a specific depth. There are two downriggers, so up to four rods may be fished at once, allowing for fishing at different depths. Fishermen are rotated (instead of assigning rods) so that everyone has a fair chance to catch a fish. The rotation order is determined by lottery. The captain may elect to use only two rods if the fish are plentiful. Please see fishing information on page 10.

Glacier View Bike & Brew



Approximately 4¼ hours • \$\$

This tour is more than just a bike ride—it gives you a chance to experience the beauty that surrounds Juneau at a slower pace with friendly, knowledgeable, local guides. On the van ride to the departure point, you will hear about Juneau’s history and some interesting information about the city and its surroundings.

You’ll be fitted with a mountain bike and helmet, and attend a safety briefing. Auke Lake marks the beginning of the ride that takes you past memorable glacier views. The first stop is by the Chapel-by-the-Lake, a lovely old log chapel with a spectacular view of Auke Lake and the glacier in the background. The ride continues on the Juneau road system to the west side of the Mendenhall Glacier, with a beach stop for a snack. Then, proceed to the visitor area at the east side of Mendenhall Glacier. This portion of the ride includes a one-mile trail ride through the rain forest. At the end of the ride, and after a chance to spend time at Mendenhall Glacier, board a van for a short ride to the award-winning Alaskan Brewery. While at the Brewery, learn about the brewing process and sample their award-winning beers. The ride covers approximately 9.2 miles on a mostly flat road with some rolling hills.

Please note: Waiver must be signed. Minimum age to taste the beer



is 21 years with photo ID including date of birth. Guests under the age of 21 must be accompanied by their legal guardian to enter the brewery. Minimum height is 4’ 8”. Minimum age is 10 years.

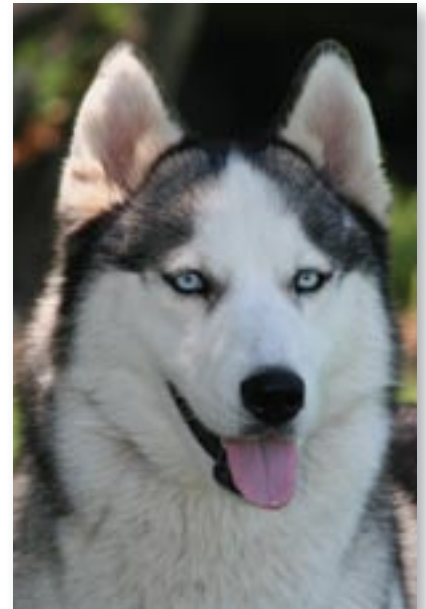
Sled Dog Discovery & Musher’s Camp



Approximately 2½ hours • \$\$

What better way to enjoy Alaska than to experience a team of powerful huskies in the great backcountry wilderness! This is your chance to glimpse a truly northern pastime. Learn about the life of sled dogs and their musher, and see these dogs in action when they pull you on a fast and thrilling summertime ride across dry ground. As you head out of Juneau to the dog camp, your guide will

acquaint you with both the town’s history and present day community. At the kennels, you’ll meet the dogs and climb onto a wheeled sled, custom made for running during the snowless summer months. The husky team will whisk you along a wooded trail through some of Southeast Alaska’s beautiful temperate rain



forest. Spruce and hemlock trees and 12-inch-thick spagnum moss surround you on this unique one-mile ride. When it’s over, sit down and enjoy a presentation by an Iditarod veteran, have refreshments and cuddle with some adorable husky puppies. Before heading back to town, you’ll wander through the musher’s camp with your guide and learn about the equipment, hard work, and great husky strength that goes into the life of dog sledding in the wild, rugged North.

Please note: This tour does not operate on snow.

Wild Coast Explorations by Private Boat



Approximately 3½ hours • \$\$\$\$



Set out aboard a deluxe catamaran to explore glacier-carved fjords and wild stretches of coast at your own pace. Your knowledgeable captain and expedition naturalist will help you design a unique cruise adventure that incorporates your personal interests. As soon as you depart Juneau's picturesque harbor, it is apparent why Alaska's capital city is not accessible by road. The steep mountain slopes surrounding town are grooved by countless avalanche chutes and waterfalls. Your private, expedition-style catamaran is the perfect vehicle for exploring this region's ice-hewn fjords and rugged coasts. Enjoy almost limitless opportunities for discovery. If you want to observe whales, sea lions, porpoise, bears and bald eagles, your skilled captain has a profound understanding of their preferred habitats and patterns of movement. He also knows the best places to explore and photograph glacier-carved peaks, untamed river deltas, secluded inlets, tidal estuaries and other natural wonders. If "hands-on" Alaska is your style, you may opt to haul crab pots to get a close-up look at the denizens of the deep, or stop by a commercial fishing boat at work to talk with the crew and admire the day's catch. And, if you wish, step ashore in a wild place of your choosing to explore tide pools, hike on game trails through old-growth forest, or just savor the serenity of an untouched land. Your expedition craft is a new, 33-foot catamaran designed specially for custom cruising. The spacious, heated cabin provides deluxe seating for six, a restroom and galley. The vessel also features large wraparound windows, an expansive open-air deck, and is fitted with a special bow-landing door to allow easy beach access. The day is yours. Explore the Inside Passage wilderness as you please.

Please note: Dress warmly in layers. Wear sturdy shoes if planning to step ashore. Bring your camera. Please see pages 5 - 6 for more details. Maximum capacity is 6 guests.



Ketchikan, Alaska



FLIGHTSEEING

Alaska Bear Adventure by Floatplane



Approximately 3¼ hours • \$\$\$\$

Approximately 45 mins total flight time

Approximately 50-60 mins at bear observation site

Tour operates approximately late July through mid-September

Take off from Ketchikan on a 20-minute flight by floatplane, headed to a remote site in the Tongass National Forest noted for its salmon rich streams and abundant wildlife. Upon landing, you will be met by a naturalist and be driven a mile along a forest road to the trail head. A short hike along an improved trail leads to a viewing platform overlooking a salmon spawning stream in a rich rain forest environment. Here, black bear gather to feed on runs of pink, coho and chum salmon, and bald eagles perch in the surrounding trees waiting for fish scraps left by the bears. In addition to black bear, the area is frequented by Sitka black-tailed deer, bald eagles, mink and marten. This is an incredible experience for the nature lover and photog-



raper. Ample time is allowed to observe the forest wildlife and ecosystem before the hike back to the van and the short drive to your waiting aircraft. The aircraft is equipped with CD stereo sound systems, and headsets for each individual guest to enjoy the narration provided. Each participant is guaranteed a window seat and the pilot will identify points of interest en route.

Please note: Wear comfortable hiking footwear and waterproof outerwear. Bottled water is provided. Access to this prime habitat is

restricted by U.S. Forest Service permit, to minimize impact and to protect the resources. This tour is not recommended for guests with physical limitations. The ¼-mile hike to/from the bear viewing area is over uneven, and sometimes difficult, slippery terrain with a few steps. This tour operates during prime bear viewing months. Wildlife sightings are frequent, however they cannot be guaranteed. See flightseeing information on page 11.

Neets Bay Bear Watch by Floatplane



Approximately 3 hours • \$\$\$\$
Approximately 50 - 60 mins total flight time
Approximately 1½ hours at Neets Bay
Tour operates approximately late July through mid-September

This once-in-a-lifetime wildlife expedition with the wild black bears of Southeast Alaska is certain to charm everyone from nature-lover to photo-enthusiast. Depart via floatplane, with all the amenities to make your trip a memorable experience, including digital CD audio systems and individual passenger headsets, to Neets Bay—one of the finest bear viewing locations in Alaska. The flight to Neets Bay is over the largest National Forest in the United States. Neets Bay is also home to one of Southeast Alaska's salmon hatchery operations. Upon arrival, a short hike down a ¼-mile, well-maintained wilderness road takes you to the viewing area where black bears often fish for their next meal. A naturalist guide will describe the habits of the bear and the life cycle of their favorite meal, the salmon. The secure, covered viewing area allows for up close observation of the bears in their natural habitat among the wilderness beauty of the Tongass National Forest. Other wildlife possibilities include eagles, Sitka black-tailed deer, mink, marten and seals.

Please note: Wear comfortable hiking footwear and waterproof outerwear. Bottled water is provided. Access to this prime habitat is restricted by U.S. Forest Service permit, to minimize impact and to protect the resources. There is a ¼-mile walk over uneven, and



sometimes difficult, slippery terrain with a few steps and narrow passageways. This tour is not recommended for guests with physical limitations. This tour operates during prime bear viewing months. Wildlife sightings are frequent, however they cannot be guaranteed. See flightseeing information on page 11.

Magnificent Misty Fjords by Floatplane



Approximately 2 hours • \$\$\$
Approximately 60- to 65-minute flight; 10-minute landing

Board an authentic Alaska seaplane and take off from Ketchikan's bustling waterfront on a scenic flight over the Tongass

National Forest. You are en route to the nation's second-largest wilderness area, encompassing more than two million acres.



To fully appreciate the vastness of the Misty Fjords National Monument, you must see it from the air. Since its identification by Captain George Vancouver in 1793, Misty Fjords has been called a scenic wonder not to be missed. You will see majestic fjords, waterfalls and lakes, and perhaps wildlife such as bears, mountain goats, deer, wolves and eagles. Individual headsets allow you to enjoy the lively narrative and inspirational music as you take in the dramatic beauty of a land slowly crafted by the hands of nature. See sheer granite cliffs, 1,000-foot waterfalls, crystalline lakes and low-hanging mists on your flight from Tongass Narrows over Revillagigedo Island to Misty Fjords. At the entrance of spectacular Rudyerd Bay, your introduction to the monument, watch for New Eddystone Rock—a striking remnant of early geological activity. Enjoy a brief lake landing in Misty Fjords, giving you an opportunity to experience the silence, serenity, and monumental beauty that surrounds you. Each guest is guaranteed a window seat.

Please note: This tour is accessible to guests with some physical limitations. See flightseeing information on page 11.

Misty Fjords Boat & Floatplane Adventure



Approximately 4 - 4¼ hours • \$\$\$\$

Approximately 3 hours on boat; 30-minute flight

Cruise on a high-speed water jet catamaran through Misty Fjords National Monument, surrounded by cliffs towering thousands of feet and waterfalls cascading into emerald waters. Your vessel pauses at a mysterious Native pictograph, before visiting Punchbowl Cove with its columnar basalt formations and the colorful Mossy Wall bird rookery. The towering volcanic spire known as New Eddystone Rock calls to mind the dramatic geologic forces that shaped this area six million years ago. A knowledgeable naturalist will provide in-depth commentary on the natural history of the area. Watch for bears, mountain goats, timber wolves, seals, sea lions, and humpback and killer whales. You will view an active eagle's nest, then at a floating dock, you will transfer to a floatplane and begin a flight over the pristine wilderness with a bush pilot. From the air, you can truly appreciate the magnitude and majesty of Rudyerd Bay, the crown jewel of this two-million-acre monument.

Please note: In the event of inclement weather, this tour may be offered as a five-hour, round-trip, cruise-only tour. See flightseeing information on page 11. Order of flight and cruise may be reversed.



Exclusive Mountaintop Flightseeing & Crab Feast



Approximately 3 hours • \$\$\$

Approximately 20-minute flight

This exclusive opportunity combines two of Alaska's favorite experiences—a flight on a De Havilland Beaver floatplane and dining on Alaskan Dungeness crab. Your flight begins as you take off from the Tongass Narrows, home to more floatplanes than any other port in the world. The bustling community of Ketchikan will quickly be revealed below as you take in the panoramic views of the spectacular mountains of the Tongass National Forest. Your flight narration will include the historic importance of the De Havilland Beaver floatplane and the many landmarks below. After twenty minutes of breathtaking scenery, you will land at the remote George Inlet Lodge—a rustic yet elegant wilderness oasis. Your host will greet you with



delicious smoked salmon as you learn about the colorful history of the George Inlet Lodge and its epic journey across 90 miles of ocean to its current location. Sip white wine or Alaskan Amber beer as you learn about Alaska, Ketchikan and the wilderness lifestyle. Then, you will be seated in the elegant Oceanside Dining Room and your feast will begin—a fresh romaine salad topped with homemade oriental-style dressing, followed by steamed baby red potatoes, Dungeness crab and melted butter! A piping hot second helping of crab will arrive shortly. Last, but certainly not least, indulge in rich, creamy cheesecake smothered in Alaskan blueberry sauce! A quick visit to the gift shop is a must before you depart. The second half of your journey is a narrated coastal drive back to downtown, passing totem poles, a fish hatchery, and the coast guard station of Ketchikan.

Please note: Flight path is subject to change due to weather conditions. Floatplanes can be difficult to board for mobility-challenged guests. A van is available for guests who may have trouble using the stairs at the lodge.





SIGHTSEEING

Private Alaska Touring

For a truly personal experience filled with intimate moments, discriminating travelers leave the beaten trail behind. These private touring options let you create the customized Alaskan experience of your dreams. Structure your time in port any way you like, whether it's touring the wharf, scouting for wildlife, fishing some of the best waters in the world, or exploring Revillagigedo Island. No matter what you choose, you'll receive personal attention from a knowledgeable local guide, hand-selected and matched to your individual interests. Your private excursion begins in historic Ketchikan; then you will continue your customized experience by one of the following:

A. Open-Air Skiff



Approximately 4 - 5 hours • \$\$\$\$

Ride in a private, open-air skiff just like the locals use—the authentic way to explore coastal waters for extraordinary fishing opportunities and wildlife viewing in a serene natural environment.

Please note: Maximum capacity is five guests. Minimum age is 5 years; maximum weight is 300 lbs.

B. Classic De Havilland Floatplane



Approximately 3 hours • \$\$\$\$

Approximately 90 mins total flight time

Thrill-seekers will love the breathtaking aerial views and amazing photo opportunities. Floatplanes can even land in remote areas and special places of interest.

Please note: Maximum capacity is five guests for a De Havilland Beaver. An upgrade to a 10-guest capacity De Havilland Otter can be requested.



C. Luxury SUV Limo



4 hours • \$\$\$\$

Travel in comfort, even when headed off-road to the places locals favor. This private limo is also a great way to explore the culture, cuisine and shopping of Ketchikan.

Please note: Maximum capacity is six guests for the SUV limo. An upgrade to a 10-guest capacity stretch limo can be requested. For more details and itinerary suggestions for Private Alaska Touring see pages 5 - 6 or visit our website at www.hollandamerica.com.

Ketchikan by Private Hummer



Approximately 4 hours • \$\$\$\$

This tour begins on the Ketchikan dock and is customizable at any point along the way. This tour is a private car service with a twist—you will have a Hummer (a rugged, exciting vehicle modeled on the famous military HumVee) and knowledgeable driver/guide at your service! You choose where you go and what you see, but among the options are Saxman Native Village, a walk through the rain forest, a beach walk, a stop at Herring Cove to look for wildlife in season, waterfall viewing, Ward Lake in the Tongass National Forest, and Totem Bight State Park. A small snack will include Alaskan smoked salmon, cheese, crackers, grapes and bottled water.

Please note: Meals not included. Please see pages 5 - 6 for more details. Each Hummer can accommodate up to four adults.

Misty Fjords & Wilderness Explorer



Approximately 4¼ hours • \$\$\$

Explore Misty Fjords, one of nature's most spectacular creations, while cruising in luxury aboard one of the fastest sightseeing vessels in Alaska. Leave Ketchikan's picturesque harbor, passing colorful float planes and fishing boats, in route to a wilderness experience into Behm Canal, surrounded by the pristine beauty of Misty Fjords. You'll stop to view an active bald eagle's nest,





and a Tlingit pictograph. Admire New Eddystone Rock, an immense volcanic spire rising from the emerald sea. Delight in an unhurried exploration of Rudyerd Bay, an ice-carved masterpiece deep within the Monument, as you glide quietly beneath 3,000-foot vertical cliffs. Feel the mist of glistening waterfalls and listen to the call of seabirds nesting on a rock face sculpted by glacial forces. On the cruise back to Ketchikan, enjoy a selection of snacks and beverages while watching for whales, seals, eagles and other species of wildlife. You'll also have the opportunity to experience Native culture and history presented by a Tlingit storyteller, watch a Native artist at work, or enjoy a tour-related video presentation.

Please note: Bring a warm, rainproof jacket. Operates in all weather conditions. Wildlife sightings are frequent, but not guaranteed.

Totem Bight Park & City Tour



Approximately 2½ hours • \$

Begin your journey with a scenic drive along the Tongass Narrows to Totem Bight State Park, home to one of the world's largest stand of totems. Stroll the Totem Bight trail under a canopy of majestic hemlock and cedar trees. At the end of the trail, you will find a large collection of totem poles. Through live-ly stories you will learn about the culture and lifestyle practiced by the Northwest Coastal Natives and have a chance to enter an authentic Native clan house. After a brief stop at the quaint Alaska Totem Trading Store, an entertaining city tour shows you the industries that made Ketchikan the "Salmon Capital of the World." Returning to the pier, catch a glimpse of



Ketchikan's colorful past as you drive past the Creek Street historic red-light district.

Please note: Wear warm layered clothing. Tour is wheelchair accessible with a companion to assist. Add The Great Alaskan Lumberjack Show for a great combination (see tour below).

Totem Bight & Lumberjack Show



Approximately 3½ - 4 hours • \$\$

Combine Totem Bight (above) and The Great Alaskan Lumberjack Show (below) to make a great day in Ketchikan, including the rain forest, totems, and the "art" of lumberjacking.

The Great Alaskan Lumberjack Show



Approximately 1½ hours • \$
One-hour show

Treat yourself to an action-packed experience at The Great Alaskan Lumberjack Show, where the world's best lumberjacks go head to head in more than a dozen exciting events such as chopping, sawing, relay races, axe throwing, log rolling and a 50-foot speed climb. The colorful host will introduce the events and offer a historic view of the Alaskan timber industry which has shaped this rugged land. Just a short walk from your cruise ship pier, this celebration of a bygone era is a rip-roaring good time and quality entertainment for all ages.



Please note: This show operates rain or shine in heated and covered grandstands. This is an excellent choice to combine with any other tour. Video recording is not permitted, but still photos are allowed.

Saxman Native Village: An Exclusive Inside Look



Approximately 2½ hours • \$\$

Don't be fooled by cheap imitations—this tour provides exclusive access to the Beaver Clan House, a working Native



carving center, and a chance to view the traditional Native dancers first hand. You can't buy this tour elsewhere, so if you're going to Saxman Native Village make sure you are part of this genuine, up-close look at the rich living culture of Southeast Alaska's Native Americans. The Tlingits welcome you in the traditional style that defines the culture of Southeast Alaska.

A short video program introduces you to the culture and history of Saxman. You will then enter the Beaver Clan House where you are welcomed by song and dance. Visitors are encouraged to participate in the final dance, before moving on to the Saxman Totem Park, one of the largest gatherings of totems in the world. Your guide will help unravel the mysteries of these towering, majestic poles. At the Village Carving Center, skilled craftsmen pass on their skill to eager apprentices. Fine Alaska Native art and small mementos are for sale. On the return trip, those who wish may be dropped off at the historic Creek Street District.

Please note: Tour is wheelchair accessible with a companion to assist. Add The Great Alaskan Lumberjack Show for a great combination (see tour below).

Saxman Native Village & The Great Alaskan Lumberjack Show



Approximately 4 hours • \$\$\$

Combine the two preceding tours to make a great day in Ketchikan. You will experience Native American culture through song, dance and stories, and learn of the "art" of lumberjacking through a rollicking demonstration of good-natured competition and hard-earned skill.

Please note: There may be a short wait prior to the Lumberjack Show. This time can be spent on your own or in the rustic company store located at the Lumberjack Show facility.

Best of Ketchikan by Land & Sea



Approximately 3½ hours • \$\$

Experience Ketchikan's rich maritime history, native culture and breathtaking wilderness surroundings, by land and by sea. Depart Ketchikan by motor coach as your driver/guide points out historic Creek Street where homes and shops are perched over the water on wooden pilings. At Saxman Village, stop to view one of the world's largest gatherings of totem poles. Your guide will interpret the meanings of these giant sentries that border the park and entrance to the Beaver Clan House. Continue to George Inlet, where a relaxing stroll through the rain forest brings you to the historic Libby Cannery. A short video will take you back to the days when rugged men and women toiled day and night to harvest and process the abundant Alaskan salmon. From the cannery dock, board a water-jet powered vessel with a heated main cabin, comfortable seating, a snack bar and restroom. As you explore the coastline of glacier-carved George Inlet an on-board naturalist will explain the natural history of Southeast Alaska's forests and ocean. Eagles, seals, porpoise and other species of wildlife are often sighted on this cruise. The captain will maneuver the boat to give the best possible view. Entering Tongass Narrows you will pass by a fascinating variety of working vessels. A mariner's view of Alaska's busiest port and your cruise ship will provide this tour's final backdrop for learning how Ketchikan earned its title as "Salmon Capital of the World."

Please note: Dress in warm layers; wear comfortable walking shoes.



City Highlights, Totems & Creek Street by Trolley



Approximately 1½ - 1¾ hours • \$

Learn the history and culture of Ketchikan as you travel aboard a festive trolley. You will be entertained by a lively guide while passing by some of the city's most colorful landmarks. Travel



through downtown Ketchikan and pass the bustling boat harbor, lush City Park and beautiful Ketchikan Creek. Next, you'll have an opportunity to stretch your legs on a brief photo and shopping stop. Photograph majestic totems up close, and shop at one of Ketchikan's finest stores to purchase authentic Native-made items as well as curios. Finally, you're off to

Creek Street—Ketchikan's historical red light district. There's time to explore Creek Street on your own for 30 minutes, then your trolley driver will be waiting for you at the other end of the boardwalk to take you back to your ship. Alternatively, you may enjoy at your leisure the many shops and eateries of the downtown area and make your own way back to the ship.

Rain Forest Sanctuary & Eagle Center



Approximately 2¼ hours • \$\$

This eco-exploration includes a guided nature hike, bald eagles, Alaskan reindeer, a Native totem carver and a historic sawmill at an exclusive reserve located in the forested mountains at rustic Herring Cove. This pristine natural environment is home to bald eagles, black bear, seals and a variety of birds and other species attracted by the major salmon runs in the abundant marine estuary. A naturalist will guide you along an improved trail through the heart of the dense forest, among tall stands of hemlock, spruce and Alaska cedar, stopping at strategically located viewing areas. At a protected, open estuary, you'll follow Eagle Creek along an elevated wooden boardwalk overlooking grassy wetlands. Major runs of salmon return to spawn here. Listen to the symphony of bird activity in this spectacular setting. Seasonal ecosystem changes result in varying levels of wildlife activity. After a half-mile trail walk you will have a chance to feed reindeer, visit the historic Herring Bay Lumber Company sawmill, see bald eagles up-close at the Bald Eagle Center, and observe a master Native totem pole carver at work. Snacks and beverages are provided and shopping opportunities await in the general store.

Please note: Wildlife sightings are not guaranteed. Tour operates in

all weather conditions. Rain ponchos provided. Wear comfortable walking shoes and warm clothing.

Clover Pass Jet Boat & Totem Tribal House



Approximately 4 hours • \$\$\$

Take off on this unique tour that allows you to see Ketchikan's wilderness backcountry along with a stop at a traditional Native American village. Your tour begins with a scenic narrated drive en route to breathtaking Salmon Falls Resort. Here you will enjoy a light meal in the log dining room and have a chance to explore the picturesque grounds and cascading waterfall. Then it's time to take in more scenic wilderness beauty in a comfortable, high-speed, fully-enclosed, 46-passenger jet boat. Learn of the flora, fauna and sea life of the area as your boat captain whisks you across the pristine waters of Clover Pass. Your guide will entertain you with stories of coastal living and you'll be able to view many of the remote homes along the island-studded channel. The next part of your journey takes you to Potlatch Park. Enter the park and learn the history of the region's first inhabitants. You'll have the opportunity to enter a traditional Native tribal house and view and photograph stately totems up close. End your visit to Potlatch Park with a stop at Alaska Totem Trading, which is a quaint gift store and vintage vehicle and gun museum. Returning to town you will be entertained by a lively tour past some of the city's most colorful landmarks.





ADVENTURE

Wilderness Hike & Jet Boat Expedition



Approximately 4 hours • \$\$\$

Come join this guided wilderness hike in the remote, privately-owned White River Valley. Enjoy a narrated city tour as your motor coach takes you into the wilderness surrounding Ketchikan. Meet your guide at the trail head and get ready for a journey into the rain forest. After a brief walk through the muskeg, you will find yourself meandering along an improved trail that follows White River. Your guide will tell you all about the wonders of the Tongass National Forest and help you identify many different types of flora and fauna that inhabit the area. Your hike will take you through areas of old growth and recent clearcut as you learn about the abundant resources of the Tongass. Keep your eyes open for wildlife as the White River Valley is teeming with animals, from eagles and salmon to deer and bear. Your hike ends at the White River Base Camp where you will transfer to a waiting jet boat for a beautiful nature cruise back to town.

Please note: The hike is approximately two miles over uneven terrain. The trail is improved, but is not gravel. Wear comfortable, waterproof walking shoes; they may get dirty or muddy.

Wilderness Guided Fly Fishing



Approximately 4½ hours • \$\$\$

Tour operates mid-July through September only

Beginners and experts escape to a remote, privately-owned river valley in the great Alaskan outdoors for a choice of outstanding fly-fishing or spin casting. Once you have been fully outfitted, your guide will take you to one of his favorite fishing spots to fish for cutthroat trout, dolly varden, or pink and coho salmon (varies seasonally). It is common to spot black bears, bald eagles, ducks, geese, and river otters on the river. The river valley and river itself is privately owned by a local Native corporation. This tour has exclusive use of the river which is surrounded by old and second-growth forest which is home to abundant wildlife.

Please note: Fishing is catch-and-release only. Alaska State law requires a valid 1-day fishing license, which may be purchased for us\$20 cash from your guide. Minimum age is 14 years. See fishing information on page 10.

Exclusive Guided Fishing & Wilderness Dining



Approximately 5 - 6 hours • \$\$\$\$

Approximately 2 - 3 hours fishing

Experience an authentic fishing excursion in the unspoiled wilderness of Alaska's coastline. You'll be outfitted with waterproof boots, bib overalls, hooded jacket, hat and gloves. Then, glide into a breathtaking landscape aboard a stable, open-air, 20-foot skiff. Cast a line, and what you catch will become the fresh basis of a gourmet campsite meal! With only four guests per boat, your professional guide customizes the excursion to fit your interests and skill level. Along the way, you may view seals, eagles, whales, birds,

porpoise, spawning salmon, and even bears. With quality fishing gear, hone your skills landing rockfish, red snapper, ling cod, halibut or salmon. After fishing, the skiff heads to a wilderness campsite, where a crackling fire awaits in the rain



forest of ancient cedars and spruce. Here, you'll enjoy a gourmet meal of your own freshly caught fish, served atop a saffron-infused, bouillabaisse-inspired stew (no shellfish). Savor sourdough rolls with garlic-aioli spread, a signature rhubarb and blueberry bread pudding, and steaming mugs of coffee or hot chocolate. You'll leave having experienced the Alaskan way of life.

Please note: Alaska State law requires a valid 1-day fishing license, which may be purchased for us\$20 cash at the Outfitting Room. Participants must be physically active, as this tour requires negotiating uneven terrain and the skiff is open to the elements. Rain gear, rubber boots, comfortable float jackets, wool socks, hats, gloves, fishing equipment and tackle, are provided. Minimum age is five years. See fishing information on page 10.



Eagle Islands Sea Kayak



Approximately 3¼ - 3½ hours • \$\$

Your paddle in the Tongass National Forest begins with a ride to Clover Pass at the north end of Ketchikan. You will be introduced to your tandem kayak and receive a safety briefing from your guide. Gain confidence as you paddle out to the Eagle Islands. The protected waters provide the ideal way to see the



tranquil, lush, green setting of the Tongass National Forest. You will learn about the natural and cultural history of the area while keeping a keen eye out for bald

eagles and their nests, seals, jumping salmon and when the tide conditions are right, sea stars.

Please note: Minimum age is 8 years. Maximum weight is 230 lbs. Maximum height is 6' 7". Approximately 85 minutes paddling.

Tatoosh Islands Sea Kayaking



Approximately 4 - 4½ hours • \$\$\$

Your adventure begins with a ride to the north end of Ketchikan. At the Outdoor Adventure Center, you will gear up for a quick and exhilarating motorized inflatable boat ride to the Tatoosh Islands. Upon arrival at this isolated and protected area, your guide will present an informative kayak demonstration and safety talk before launching from the beach in your double sea kayak. Keep an eye out for inter-tidal life, bald eagles, minks, river otters, seals and sea lions in the serene island environment of the Tongass National Forest.



Please note: Minimum age is 8 years. Maximum weight is 230 lbs. Maximum height is 6' 7". Approximately 1 hour and 40 minutes paddling.

Orca Beach Rain Forest Nature Trail



Approximately 4 hours • \$\$

Approximately 1 hour hiking; ¾-mile hike

Join a trail guide for a hike through a natural, unspoiled old-growth coastal forest by way of a secluded beach. After hiking this gently sloped, historic trail, a light snack is provided as you take time to explore the natural beauty around you. A motorized inflatable boat provides an exhilarating cruise along the coast. Bring your camera and binoculars.

Please note: Rain gear and life jacket provided. Wear warm, waterproof clothing. Not recommended for guests with back problems. Minimum age is 6 years. Minimum weight is 40 pounds.

Backcountry Jeep® & Canoe Safari



Approximately 4 hours • \$\$

Take the wheel of a four-wheel-drive Jeep Wrangler® and wind your way caravan-style along abandoned logging roads in the Tongass National Forest. Your group leader provides commentary by means of interactive radio. Learn of the timber industry's reforestation methods and of the area's natural history. For the Jeep® portion, groups of four will be assigned to each vehicle. The drive ends at Lake Harriet Hunt, where you will climb into an easy-to-paddle, 20-person native-style canoe, in which you and your companions will navigate across the mountain lake ecosystem. On the other side of the lake, enjoy a snack and your guide will lead a short nature walk through the lush old-growth rain forest before you re-board the canoe and paddle back across the lake.



Please note: Total paddling time is 30 - 40 minutes. Dress comfortably. All Jeeps® have radio communication with guide vehicle. Tour will operate in all weather conditions. Drivers must be at least 25 years old, and must show a valid drivers license, and must sign a liability/insurance waiver. Driving responsibilities may be rotated. Children must weigh at least 40 lbs to fit into required life jacket for canoe portion.

Ketchikan Motorcycle Tour



Approximately 3½ hours • \$\$\$\$

This award-winning motorcycle tour (2007 Best Alaska Shore Excursion Editor-in-Chief Award, *Porthole Cruise Magazine*) takes participants on Alaska State Highway 7 winding between sea and forest. Listen to the lore and legends of Alaska told by



your guide at beautiful scenic stops. This tour covers approximately 50 miles using Harley-Davidson® Sportsters® equipped for two-up riding with comfortable Sundowner® seats, sissy

bars and windshields. Stops may include Knudson Cove Marina, where soaring bald eagles can be seen, Tongass National Forest Trail head, Potlatch Park, where totem poles are carved, and the Green Coffee Bean Company to enjoy some of Ketchikan's finest coffee. Join the growing number of motorcycle enthusiasts who choose to see this part of Alaska on two wheels.

Please note: Helmet use is mandatory. A valid driver's license with motorcycle endorsement is required. Riders must be willing to demonstrate riding skill prior to tour departure. Waiver release form must be signed. Tour participants are required to put a deposit of \$2,500 on a major credit card for insurance deductible, which is credited when equipment is returned undamaged, including motorcycle and riding gear. Minimum age is 21.

Mountain Point Snorkeling Adventure



Approximately 3 hours • \$\$

Immerse yourself in Southeast Alaska's breathtaking underwater world as you snorkel the calm and clear waters of Mountain Point. You'll be toasty warm in a state-of-the-art ¼-inch (7mm) wetsuit complete with hood, boots and gloves as you hover among Alaska's diverse and colorful marine life. Thanks to the Japanese Kiroshio current, long summer days and the lack of glaciers in this area, water temperatures reach a surprising 65 degrees F in summer! Mountain Point is Southeast Alaska's premier snorkeling destination. The site has shallow tide pools

teeming with marine life and steep underwater rock walls for free-diving, all just five miles from your ship. Change into your wetsuit in the comfort of heated dressing rooms. There



is secure storage for your belongings and all equipment is provided for this truly unique adventure. Your guides are PADI professionals with Rescue Diver, Divemaster or SCUBA Instructor certifications. High quality equipment is used, complete with prescription masks, Scubapro Twin Jet fins and optional weightbelts for free-diving. Complete instruction, in-water supervision and entertaining in-water narrative make this award-winning excursion suitable for beginners and experienced snorkelers alike. During your one-hour guided marine life tour you will observe and handle a variety of multi-colored sea stars, urchins, sea cucumbers and the giant sunflower star. Discover the myriad of fish and colorful invertebrates that inhabit these waters while snorkeling over the kelp forest. Back at the shop, enjoy a hot beverage before returning to your ship.

Please note: Minimum weight is 90 lbs; maximum weight is 260 lbs. Bring a towel and a swimsuit to wear under the wetsuit. Waiver release form must be signed. Participants should be reasonably physically fit. Past or present medical conditions may restrict participation.

Rain Forest Canopy & Zipline Expedition



Approximately 3¼ hours • \$\$\$

Live the thrill of gliding through the top of a rich rain forest canopy along a series of eight dual cable ziplines with three aerial bridges suspended between tall spruce, hemlock and cedar trees, bordering the magnificent Tongass National Forest. This major rain forest reserve embraces one of Alaska's richest salmon spawning streams and a pristine inter-tidal estuary. Abundant wildlife habitat here includes a high concentration of bald eagles, black bear and a variety of other species. At Herring Cove an all-terrain custom 4x4 Unimog will transport you up a steep rain forest hillside to the canopy chalet. Professionally trained guides



will outfit you with state-of-the-art safety equipment and provide a detailed orientation before you mount the first platform. Your rain forest canopy challenge features a flight over eight ziplines—6,000 feet of high-tension cables and ground-based nature trails. Your guides will progressively ease you into the forest canopy along cables ranging from a short 100 feet to the 850-foot, pulse-pounding “Ben’s Revenge.” Eagles and

bears are often seen from the platforms. Discover Eagle Creek falls, and cross three hanging bridges offering breathtaking views of the virgin forest below. You will be up to 135 feet above the forest floor. Throughout this adventure you will be surrounded by the sights and sounds of the rain forest wildlife preserve. The final zipline emerges from the rain forest and transports you over lush grassy wetlands to a viewing tower, 55 feet above ground. Descend the stairs and gear down at the base camp. Upon completion of this amazing experience, enjoy a snack and hot beverage, view your photograph and shop in the General Store.

Please note: Wildlife sightings are likely but cannot be guaranteed. Minimum weight is 90 lbs; maximum weight is 250 lbs. Minimum age is 12 years. Full use of limbs required. Pregnant women and guests with injuries/seizure disorders are not allowed to participate in this tour. Completion of waiver release form required. Closed-toe shoes required. Long pants and layered clothing recommended. Rain gear provided.

Adventure Kart & Jet Boat Expedition



Approximately 4 hours • \$\$\$

Don’t just visit Alaska—experience it! Learn about the history and economy of Ketchikan as you travel to the staging area for your adventure on a specially-designed, off-road military Tom-Car go-kart. After a brief safety orientation, set out on your go-kart on a one-hour trek through a privately-owned rain forest preserve. A remote backcountry road threads along the scenic shoreline of George Inlet. Glacier-carved Mahoney Basin,

surrounded by sheer cliff, dense forest and waterfalls is your destination. Drivers and passengers have a chance to switch places here. Next, you will board a jetboat for a thrilling one-hour ride back to Ketchikan, viewing George Inlet from the water.



Please note: Rain gear, helmet, snack and beverage are provided. Guests who intend to drive a go-kart must present a valid driver’s license. Persons weighing less than 40 pounds or under 50 inches in height are not permitted on this tour. Maximum weight is 300 lbs.

Bering Sea Crab Fishermen’s Tour



Approximately 3½ hours • \$\$

This tour brings you as close as you’ll ever likely get to the Alaskan crab fishing industry, allowing you to brush up against the real experience. Real fishermen share some the passion and vitality that drives them to this life. See and touch the amazing creatures that are part of their everyday experience while staying warm, dry and comfortable the entire time. Set out into the calm protected waters of Southeast Alaska on the *f/v Aleutian Ballad*—the same vessel seen on the Discovery Channel’s *Deadliest Catch* program, but completely modified with your comfort, enjoyment, and safety in mind. The heated and sheltered state of the art on-board amphitheater prepares you for an experience unlike any other. Alaska’s commercial fisheries come alive so close to the action that you will see water dripping from 700-pound king crab pots as they land. Be prepared with your camera as king and snow crab, octopus, prawns and sharks, just to name a few, are set on deck just a few feet away from you. The animals are placed in a live tank before being released back into the wild. This is an extraordinary experience of life aboard a beautiful working boat. Alaska is home to whales, seals, otter and sea lions. Capture these magnificent creatures with your camera. What you’ll take home is an Alaskan adventure so real the memories will last a lifetime.

Please note: Dress in comfortable, warm layers. Bring foul weather gear if you have it.

An Alaskan Chef's Table



Approximately 2 hours • \$\$

Dust off your fondest memory of an exquisite meal highlighted by an entertaining host by stepping out of the ordinary. Today you will be an honored guest for a meal that will not only please your palate, but will entertain you by highlighting Ketchikan's individual epicurean culture.



Whether you rank yourself as a true gourmet, or are simply a fine dining connoisseur, this is a tour to savor. Entering the private club room overlooking the harbor, you'll feel an immediate sense of intimacy with just a handful of guests as you settle in with your host. Hear of Norwegian grandmothers cooking up fish cakes in the Lutheran church basement, competing for the title of best in town. Relive tales of stormy

nights at sea while comparing the rich tastes of spot prawns, and king or Dungeness crab. A five-course tasting menu is planned to highlight Alaska's sustainable, wild bounty. Your personal chef serves a succulent meal while sharing secret methods of "brining," roasting, smoking and grilling. Leave with the recipes and knowledge to duplicate your sumptuous meal for friends and family at home.

Wilderness Exploration & Crab Feast



Approximately 4 hours • \$\$\$

This truly Alaskan experience features the pulling of Dungeness crab pots by boat from a wilderness estuary. It is topped off with a crab feast in a historic cannery building now converted to an elegant ocean-side lodge. Leave downtown Ketchikan and embark on a fully narrated drive that follows the scenic coastline past a cannery, an old sawmill, totem poles and waterfalls. Arrive at George Inlet Lodge and board a 36-foot enclosed catamaran.



On your journey up the fjord, you will pass the old George Inlet Cannery and learn about the fish traps and "pirates" that plagued the area years ago. View a short-seam silver mine and the Mahoney Glacial Cirque, with snow capped mountains and 2,000-foot waterfalls. Below the cirque, the Mahoney River Valley is home to bears, eagles, and salmon that return to spawn annually. Orca whales, sea lions, and seals frequently visit the area in search of the abundant food supply. Cross the fjord to a remote crab estuary and witness the awe-inspiring grandeur of the Tongass National Forest, the largest temperate rain forest in the world. This isolated cove is home to hundreds of Dungeness crab. Volunteers will assist in pulling up crab pots and gain knowledge from a hands-on opportunity to see the crab up close and learn about their anatomy and life cycle before the crab are set free. Important measurements and statistics are recorded for Fish & Game. Once the pots are reset, it's back to the warm and inviting George Inlet Lodge, where a delicious Dungeness crab meal awaits you. Relax amid the rustic charm and the Alaskan hospitality of the George Inlet Lodge while you learn about its origins as a working cannery. After a quick lesson in the art of crab cracking, you will enjoy the succulent delicacy of this Alaskan favorite. Your banquet will include a beverage, oriental salad, steamed baby red potatoes, one full Dungeness crab, and a slice of cheesecake smothered in Alaskan blueberries.

Please note: Dress in comfortable, warm layers. Foul weather gear is provided if necessary.



Ketchikan Salmon Fishing



Approximately 5½ hours • \$\$\$

Approximately 4 hours on boat

Enjoy a 25- to 30-minute guided bus tour along the Tongass Narrows on your way to the marina. Board a modern fishing boat, and head to the nearby salmon fishing grounds. Eagles, whales, seals, sea lions or other wildlife may be on the agenda as well! With only 4 - 6 guests per boat, you're off for a fine



adventure fishing in the sheltered waters of Clover Passage. Rain gear is supplied, but footwear is

not. Wear deck- or rubber-soled shoes and appropriate outdoor clothing.

Please note: Alaska State law requires a valid 1-day fishing license, which may be purchased for us\$20 cash from your fishing boat captain along with a us\$10 cash king salmon stamp (during king season May-June). Trolling involves using a downrigger to lower the bait to a specific depth. There are two downriggers, so up to four rods may be fished at once, allowing for fishing at different depths. Fishermen are rotated (instead of assigning rods) so that everyone has a fair chance to catch a fish. Rotation order is determined by lottery. The captain may elect to use only two rods if the fish are plentiful. A light snack is provided. See fishing information on page 10.



Seattle,
Washington



SIGHTSEEING & TRANSFERS

Boats, Bridges & Billionaires with Airport Transfer



Approximately 3 hours

With prepaid transfer voucher – \$

Without prepaid transfer voucher – \$\$

Meet your driver/guide dockside for a narrated drive to Lake Union. Step aboard a sightseeing boat and enjoy both Lake Union and Lake Washington on this 1½-hour cruise. Hear live narration on the fascinating history and interesting facts of

Seattle. See Gasworks Park and the historic houseboat and floating home communities, including the home featured in the movie *Sleepless in Seattle*. Your tour will bring you through the Montlake Cut into Lake Washington, passing by the University of Washington's

Husky Stadium, cruising further into the lake past the world's longest floating bridge. Here, you will catch a glimpse of the residence of Seattle's most-recognized Microsoft multi-billionaire. Explore Seattle's unique blend of city living and the natural beauty that surrounds it, with the chance to view both Mt. Rainier and the Cascade Mountains. Limited food and drinks are available for purchase on board. After returning to Lake Union, you'll re-board your motor coach for a narrated ride to the SeaTac International Airport or return to the ship.

Please note: Available to guests with flights departing after 1:30pm.



Panoramic Seattle & Airport Transfer



Approximately 2 hours

With prepaid transfer voucher – \$

Without prepaid transfer voucher – \$\$

Didn't have time to see the sights of Seattle before your cruise? Join this fully narrated driving tour to learn the history of Seattle past and present. You'll not only experience the heart of Seattle in the vibrant downtown core, you'll also see some of the sights that make Seattle famous. Cross a drawbridge to reach the Ballard and Fremont neighborhoods. A road sign as you enter Fremont declares this eclectic district to be the Center of the Universe, and demands that you set your watch ahead five minutes. Catch a view of the magnificent campus of the University of Washington and Husky Stadium—a football field boasting one of the finest views in Seattle. You'll pass right by the Space Needle, both historic and amazingly futuristic at the same time, and the bizarre Experience Music Project building which you will find either monstrous or marvelous, with little likelihood of middle ground! Watch for the world famous Pike Place Market packed with farm-to-market stalls and colorful flowers, then your tour ends with a transfer to Sea-Tac International Airport or return to the ship.

Please note: Available to guests with flights departing after 1:00pm.



Best of Seattle & Airport Transfer



Approximately 3½ hours

With prepaid transfer voucher – \$

Without prepaid transfer voucher – \$\$

Past and present thrive side by side in Seattle, and you'll see the best of what Seattle has to offer. View Seattle's new sports stadiums, then discover the historic flavor of Pioneer Square, Seattle's birthplace dating back to 1852. Pass the International District and tour through the downtown core and shopping district and circle the Seattle Center campus on your way to the Space Needle, where you'll soar to the top by elevator for an unforgettable vista of the Emerald City. From here, you'll head through newly renovated Belltown to the Pike Place Market—the West Coast's largest and oldest open-air farmers' market. Here you'll have the opportunity to browse the hundreds of curio shops and local artisan stalls. Don't forget to check out the "Flying Fish"—one of the more famous vendors at the Market. Your tour ends with a transfer to SeaTac International Airport or return to the ship.



Please note: Available to guests with flights departing after 2:00pm.

SeaTac Airport Transfer

Approximately 45 minutes • \$

As a convenience to guests who have not pre-booked an airport transfer, we offer transportation to the airport for guests with flights departing after 11:30am on the day of disembarkation.



Seward, Alaska



SIGHTSEEING

Alaska Sealife Center



Approximately 2½ hours • \$\$

The Alaska Sealife Center is a \$56-million-dollar facility funded in part by the *Exxon Valdez* settlement, dedicated to understanding and maintaining the integrity of Alaska's marine ecosystem through research and rehabilitation. Experience a world of wonder where sandfish flutter across the ocean floor and jellyfish drift with the changing current. Interactive exhibits and displays allow you to come face to face with Steller sea lions and a chorus of seabirds, and to hold a living starfish. Artistically designed



habitats mirror the natural surroundings of Resurrection Bay, which is located just outside the center.

Please note: This tour is unguided and is available to guests on northbound sailings Vancouver to Seward. It can be purchased by those who are staying in Seward and by those transferring to Anchorage in the afternoon.

Resurrection River Float Trip



Approximately 2 hours • \$\$

1½-hour float; ½-hour transfers & orientation

Come join us for a relaxing float on the Resurrection River. This trip departs near the face of Exit Glacier and floats eight miles down the river. Enjoy expansive views of the Resurrection Valley and learn about the area from your guide.

Please note: Dress in layers and bring sunglasses and a camera. Minimum age is 5 years. This tour is available to guests on northbound sailings Vancouver to Seward. It can be purchased by those who are staying in Seward and by those transferring to Anchorage in the afternoon.

Exit Glacier Tour



Approximately 2 hours • \$\$

Experience one of Alaska's few walk-in glaciers—Exit Glacier.

On this two-hour tour a naturalist will talk about the effects the glaciers have had on the area. At the end of the road, follow the flat, easy, half-mile walk on a path through alder forest to the glacier's terminus. The first half of the path is paved. Exit Glacier is three miles long and descends some 2,500 feet from the Harding Icefield. You can experience the end (or terminus) of the glacier firsthand on this tour.

Please note: Dress in layers and bring a rain coat. This tour is available to guests on northbound sailings Vancouver to Seward. It can be purchased by those who are staying in Seward and by those transferring to Anchorage in the afternoon.



Iditaride Wilderness Sled Dog Ride



Approximately 2 hours • \$\$
1½ hours on tour; ½-hour transfers

Visit the Seavey Homestead in Seward, home of the 2004 Iditarod champion Mitch Seavey. Tour the racing kennel, experience a two-mile summer dog sled ride, cuddle the adorable puppies and learn about the Iditarod. You will laugh at the some of the hair-raising tales from the trail. Tours are guided by Iditarod mushers and are great fun for all ages and abilities.

Please note: This tour does not operate on snow. This tour is available to guests on northbound sailings Vancouver to Seward. It can be purchased by those who are staying in Seward and by those transferring to Anchorage in the afternoon.



TRANSFERS

The following tours are available to guests transferring from Seward to Anchorage on the day the ship arrives in Seward. These tours can be purchased independently, or can be added to your existing transfer arrangements. Pre-book these tours on our website at www.hollandamerica.com or at the Shore Excursions Office on board. All tour times include the transfer and the tour.

Kenai Fjords National Park Cruise



Approximately 9 - 10 hours
With prepaid transfer voucher – \$\$
Without prepaid transfer voucher – \$\$\$
Time on boat approximately 6 hours

Board a dayboat in Seward for a wildlife and glacier cruise in Kenai Fjords National Park, providing maximum opportunity for seeing whales, sea lions and otters, a massive tidewater glacier and the beauty of the glacially carved cliffs of the park. After your cruise, transfer to Anchorage by motor coach.

Please note: This tour is only available to guests on northbound

sailings Vancouver to Seward, with flights departing Anchorage after 7:00pm, or for guests who are overnighing in Anchorage.

Portage Lake & Glacier Cruise



Approximately 4 hours
With prepaid transfer voucher – \$
Without prepaid transfer voucher – \$\$

En route from the ship in Seward to Anchorage, add a visit to Portage Glacier.

Traveling the scenic Seward Highway, you will stop to board the *mv Ptarmigan* with an enclosed, heated cabin, and cruise to within 300



yards of Portage Glacier for fantastic views of the blue-white icebergs that decorate Portage Lake. You may even witness the “calving” of an iceberg from the glacier. The tour continues along Turnagain Arm to end in Anchorage.

Please note: This tour is only available to guests on northbound sailings Vancouver to Seward, with flights departing Anchorage at 2:00pm or later, or for guests who are overnighing in Anchorage.

Portage Lake & Glacier Cruise with Anchorage Sightseeing



Approximately 8 hours
With prepaid transfer voucher – \$\$
Without prepaid transfer voucher – \$\$\$

Transfer from your ship in Seward to Portage Lake for a spectacular one-hour cruise to Portage Glacier aboard the *mv Ptarmigan*, and cruise within 300 yards of the glacier. Continue on to Anchorage and see some of the city’s historical points of interest. Visit the 25-acre Alaska Native Heritage Center, displaying several interactive exhibits developed in recognition of and tribute to the distinct culture of the Alaskan people.

Please note: This tour is only available to guests on northbound sailings Vancouver to Seward, with flights departing Anchorage after 5:00pm, or for guests who are overnighing in Anchorage.





Sitka, Alaska

Seward to Anchorage Transfer by Motor Coach



Approximately 3 hours • \$\$

This transfer is for those guests who purchased their airfare independently (not through Holland America Line). It does not include sightseeing, and proceeds directly from the ship in Seward to Anchorage, stopping only at the Egan Convention Center downtown, and at Anchorage Airport.

Please note: This transfer is available only on the day you leave the ship in Seward.

Seward to Anchorage Transfer by Cruisetrain



Approximately 4½ hours

With prepaid transfer voucher – \$

Without prepaid transfer voucher – \$\$

Board a unique, single-level dome car with great panoramic windows. Your train passes the Resurrection River Divide, Lower



Trail Lake, Moose Pass, and a host of glaciers en route to Anchorage. Canyons, cascading waterfalls,

glaciers and spectacular scenery await at every turn. Enjoy a meal in the dining car—breakfast, lunch, snacks and beverages are available for purchase. Skirt the edge of Turnagain Arm as you head for Anchorage. Upon arrival at Anchorage International Airport, you will disembark the train and head into the terminal, or be transferred to the Egan Convention Center in downtown Anchorage.

Please note: This transfer option is only available to guests on northbound sailings Vancouver to Seward, with flights departing Anchorage at 2:30pm or later, or guests spending the night in Anchorage.



SIGHTSEEING

Up-Close Exclusive Cruise Adventure



Approximately 3½ hours • \$\$\$\$



A beautiful vessel is at your command for a wide choice of activities featuring a stunning variety of wildlife and soul-stirring coastal scenery. You choose the activity and the pace of your unique marine adventure as you indulge your senses and imagination on Sitka Sound's pristine, island-studded waters. Wildlife is plentiful here, and your captain has a profound knowledge of the preferred habitats and movement of whales, sea otters, sea lions, porpoise, seals, brown bears and bald eagles. He also knows the best places to explore and photograph awe-inspiring volcanic formations, glacier-carved peaks, secluded passages and other natural wonders. Weather permitting, you may wish to circumnavigate the rugged coast of St. Lazaria National Wildlife Refuge—breeding grounds for thousands of seabirds, including puffins, auklets and murrens. An expert naturalist will accompany you if you opt to go ashore on remote islands to beachcomb, explore tide pools, or just savor the peacefulness of an untouched place. The vessel is a 30-foot, expedition-style catamaran with a spacious, heated cabin, equipped with deluxe seating, a restroom and galley. Viewing opportunities abound from the large wrap-around windows and open-air deck, along with a special bow-landing door for easy beach access.



Please note: Dress

warmly in layers; wear sturdy shoes if you plan to go ashore. Rain poncho, binoculars, snacks and beverages are provided. Maximum capacity is six guests. Please see pages 5 - 6 for more details.

Colonial Russian America & Cultural Tour



Approximately 2½ hours • \$

Several distinct periods of Alaskan history are preserved within the island community of Sitka—from the early Native American civilization through the Russian Colonial period and the Pacific Theatre of World War II. Before the European colonists arrived in Alaska, the Eskimo, Aleut, Athabaskan, and Tlingit native groups lived off the land here. View artifacts from that period that reside in the Sheldon Jackson Museum, showcasing the ingenuity and skill of the Native settlers living in an unforgiving land. Then, you'll leave the museum to learn about the Russian colonial period that forever changed the lives of the native groups. Your route will take you past the Russian Bishop's house, Castle Hill, the Russian Blockhouse and site of the early Native Village. Crossing over O'Connell Bridge to Japonski Island, you'll see former buildings and barracks from World War II when Sitka was home to a PBY (Catalina) Aircraft Base. Stop at St. Michael's Cathedral, the "Mother Cathedral of Orthodoxy for All of America," and step inside to see icons and priceless religious artwork dating back to the late 15th century. Hear the miraculous story of how this artwork was saved from the Main Street fire of 1966, which destroyed a third of downtown Sitka. Your final stop will be at Centennial Hall to watch the New Archangel Dancers performing dances from the original provinces of Russia. Enjoy a rousing show with authentic music and costumes of a bygone era. This is an excellent way to discover Sitka and identify other historic attractions to visit on your own during your call.

Historic Russian America & Raptor Center



Approximately 3½ - 4 hours • \$\$

Visit the historical highlights of this former "Russian Capital" and tour through the Alaska Raptor "Bald Eagle" Center, staffed mostly by volunteers who rescue the birds, provide rehabilitative care for them, and hopefully release the birds back to the wild. After your introduction to the Center, you will see the "bird on a



glove" presentation. View the clinic, outside deck habitat area, and the eagle flight center. Photograph the birds throughout the grounds. A stop at St. Michael's Cathedral gives you time to explore the first Russian Orthodox cathedral in America to view priceless icons and religious artifacts. You will also visit the Sitka National Historical Park where the 1804 Battle of Alaska was fought, with a chance to view and photograph totems and Cultural Center exhibits. On a brief drive through the historic district, see the Russian Cemetery and Castle Hill, site of the 1867 land transfer ceremony and purchase of Alaska from colonial Russia. End your tour with an authentic Russian Folk Dance performance presented by the New Archangel Russian Dancers. You will have the option of returning to the ship's tender pier or remain in the downtown shopping area.

Please note: Tour involves walking on level, wide gravel pathways.

Sea Otter Quest & Alaska Raptor Center



Approximately 4¼ hours • \$\$

This excursion combines two of Sitka's most popular wildlife viewing experiences. First, board a deluxe, waterjet-powered sightseeing vessel and set out to explore the marine wilderness, to observe sea otters, whales, Steller sea lions, porpoise, harbor seals,

brown bears, Sitka blacktail deer, and a variety of marine birds with an on-board naturalist. Upon returning to Sitka you will visit the renowned Alaska Raptor Center, where injured birds of prey receive medical treatment. A wildlife interpreter will guide you through the Bald Eagle Flight Building, and you will meet some of the birds perched in outdoor habitats. Browse the gift area and bird exhibit tables before returning by motor coach to the pier.

Please note: This trip guarantees you will see an otter, a whale, or a bear. If not, you'll receive a us\$100 cash refund (\$50 refund per child) at the end of the voyage. Tour includes admission into St. Michael's Russian Orthodox Cathedral, should you choose to explore on your own after the tour. Dress warmly and bring a rain-proof jacket to wear on the boat's observation deck, and to enjoy the outdoor bird habitats and rain forest trails at the Raptor Center.

Silver Bay Nature Cruise & Salmon Hatchery



Approximately 2 hours • \$\$

This relaxing adventure features a cruise through a beautiful, glacier-carved fjord and an exclusive tour of a working salmon hatchery. You'll also learn about the rain forest's natural history as the boat glides so close to shore that you can almost touch the trees. If you spot wildlife, the Captain will maneuver the boat to give the best possible view. Step ashore at the remote Medveje Salmon Hatchery in Bear Cove to learn how Southeast Alaskan fisherman are successfully working with fisheries biologists to raise chinook, coho and chum salmon to supplement wild salmon stocks. Depending on the season, you may also see thousands of salmon swimming in floating pens being prepared for release, or gathering in the cove to ascend the fish ladder. On the cruise back to Sitka, you'll have a close-up view of the beach where, in 1804, Tlingit warriors fought a valiant but futile battle against a Russian warship for control of their ancestral home. Approaching the harbor, see the spires of St. Michael's Russian Orthodox Cathedral and other Sitka landmarks. A ticket to St. Michael's Cathedral is included in the tour.

Please note: Vessel restroom and hatchery facilities are not wheelchair accessible. Dress warmly and bring a rainproof jacket to wear at the salmon hatchery. Guests on afternoon departures will want to visit the cathedral prior to the tour—just show your tour ticket at the cathedral for admission.

Sea Otter & Wildlife Quest



Approximately 3 hours • \$\$

Enjoy guaranteed wildlife viewing on this award-winning cruise through one of the world's most beautiful coastal environments.

You will have the opportunity to observe sea otters, whales, sea lions, porpoise, harbor seals, brown bears, black-tailed deer, bald eagles and a variety of marine



birds. An on-board naturalist will explain the workings of this remarkable ecosystem. You'll also learn about the sea otters' recovery following their near-extinction at the hands of Russian fur hunters in the early 1800s. The waterjet-driven tour vessel has been specially designed to navigate Southeast Alaska's narrow island passages and open bays, allowing for spectacular wildlife viewing at close range, and features a warm and comfortable cabin with enclosed seating, large windows, a snack bar, and restrooms. This tour guarantees you will see an otter, a whale, or a bear. If not, you'll receive a us\$100 cash refund (\$50 refund per child) as you disembark the vessel. The tour includes admission into St. Michael's Russian Orthodox Cathedral, if you choose to explore the area on your own either before or after the tour.

Please note: Dress warmly and bring a rainproof jacket to wear on the observation deck. Guests on afternoon departures will need to visit the cathedral prior to the tour—just show your tour ticket at the cathedral for free admission.

"Captain's Choice" Wildlife Quest & Beach Trek



Approximately 3 hours • \$\$\$

Approximately 2-hour cruise; 1 hour on beach

Embark on an intimate wildlife viewing adventure aboard a deluxe catamaran, and step ashore on a remote island to explore the rugged coast. Your knowledgeable Captain will use his understanding of tides, weather and seasonal conditions to





design an expedition uniquely suited to the day. The maneuverability of a waterjet-powered craft will allow you to explore areas unreachable by conventional boat. Whales, sea otters, puffins and brown bear are just a few of the species that thrive in Sitka Sound's pristine environment. As animals are sighted, the Captain will skillfully maneuver the vessel to provide optimal viewing, and an expert

naturalist will explain their fascinating life-cycles and behaviors. Enjoy the encounter from the comfort of the spacious, window-lined cabin, or experience it with all your senses from outside on deck. Next, go ashore on a remote island. Delight in a quiet exploration of colorful tide pools, trace the meandering tracks of wildlife, or settle on a giant beach log to reflect on the stunning beauty around you. While beach-combing, keep an eye out for Japanese fishing floats and exotic flotsam. Enjoy a snack on the relaxing cruise back to Sitka.

Please note: Wear sturdy footwear and warm clothing. Participants should be in good health and able to hike up to ½ mile over wet, uneven terrain. Minimum age is 8 years. Operates in all weather. Rain poncho, binoculars, snacks and beverages are provided.

Sea Life Discovery by Semi-Sub



Approximately 2 hours • \$\$

Glide through eel grass beds, drift through giant kelp forests and explore rich, rocky shoals in comfortable style aboard Alaska's



only heated, rest-room-equipped, semi-submersible tour vessel. The cold waters of Alaska teem with life, including jellyfish, anemones, crab, fish,

starfish, and a variety of aquatic plants. Large, underwater viewing windows allow you to encounter the undersea world up close. A scuba diver using high-quality, underwater video reveals even more of the world beneath the sea, and an open-top aquarium brings you sea creatures right on board the vessel. Refreshments will be served. Return through Sitka Channel, with its fleet of fishing vessels, float planes, and bustling waterfront. This underwater tour is very different from those in other parts of the world.

Bird Watching & Nature Walk



Approximately 3 hours • \$\$

This tour is geared for avid bird-watchers working on their life lists, people interested in learning more about birds, and for companions of bird watchers. Alaska's bird checklist includes 445 documented species and an additional 35 unsubstantiated species. This tour focuses on birding and incorporates natural history of the area. Habitats to be explored include the seashore, estuary, muskeg, and the rain forest. Participants will learn about the birds that live in the Tongass National Forest, the largest temperate rain forest in the world. Sightings may include eagles, kingfishers, great blue herons, redheaded sapsuckers, orange crowned warblers, and sea ducks in season, thrushes, and winter wrens. The tour includes two hours in the field looking for birds, and covering up to two miles on foot. Participants need to be fit enough for the mostly level walk on a gravel trail and be dressed comfortably to be outdoors in the rain forest. A chocolate bar and water bottle will be provided.

Please note: This is a non smoking tour. Minimum age is 16 years. The nature of the tour is to walk quietly and slowly with long periods of standing and observing.

Historic Sitka & Nature Walk

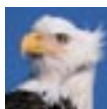


Approximately 3 hours • \$\$

Explore Sitka on foot in the company of a knowledgeable guide. On your 2½-mile walk, stroll around the base of Castle Hill, where Alaska was purchased from Russia, through the historic district, past Totem Square, the Prospector Statue and Russian Blockhouse. Pass St. Michael's Russian Orthodox Cathedral and

the Russian Bishop's House en route to Sheldon Jackson College (home to James Michener during the writing of his book, *Alaska*). At Sitka National Historical Park, flat walking trails lined with authentic totems guide you through the lush Tongass National Forest. On the way to the Raptor Center, you'll encounter the swamp-like muskeg that is home to most of Alaska's bird, plant, and wild berry life. Explore and photograph the Raptor Center's open bird habitat and clinic area with great views of bald eagles, owls, hawks, and other birds of prey. At the end of the tour you may elect to stay in the historic downtown area next to the cathedral, or return to the tender pier.

Please note: Although this tour does not include a stop at St. Michael's Cathedral, the tour includes admission into the cathedral, should you choose to explore on your own after the tour. This tour covers walking over uneven ground, a trail and stairways. Bottled water and a snack bar are provided.



ADVENTURE

Tongass Rain Forest Nature Hike



Approximately 3 hours • \$\$

Bus transportation takes you to the trail head of the Starrigavin Muskeg Trail. Set out with a guide who is well-versed in the flora, fauna, and history of Sitka and the surrounding area. Enjoy great mountain views, weather permitting, as your hike begins



with a gradual half-mile descent to Starrigavin Creek. From here, it is a half-mile level boardwalk through the Starrigavin Estuary bird viewing area, complete with restrooms. Cross the road and begin the 1½-mile Mosquito Cove Loop Trail, gaining approximately 300 feet in elevation. Walk along the beach back to Old Sitka, where you will transfer back to the dock.

Please note: The entire hike is four miles in length and is for those who are in moderate shape. Operates rain or shine. Rain gear, a complimentary water bottle and a chocolate bar are provided. Minimum age is 8 years. This is a non-smoking tour.

Wilderness Sea Kayaking Adventure



Approximately 3 hours • \$\$

Meet on the dock and prepare for your adventure by suiting up in rain gear and life jackets. Board a motorized inflatable raft for an exhilarating ride to the floating kayak base camp, where your guide will provide instruction on the use of ocean-going, two-person kayaks. These maneuverable boats allow you to explore the protected bays and inlets from a serene, natural perspective. Groups of four to six kayakers will be led by a guide well-versed in the marine environment of the area. Paddle approximately 1½ hours before returning to the base camp for a hot beverage, snack and transfer back to town.

Please note: Operates in all weather conditions. Use of rain gear and life jacket included. Warm clothing recommended. Minimum age is 6 years. Minimum weight is 40 pounds; maximum weight is 250 pounds. No prior experience necessary.

Sitka Bike & Hike



Approximately 3 hours • \$\$

This guided tour of the south end of the Sitka road system is geared for those who want to see a part of Sitka that visitors rarely experience, get some exercise, and enjoy the fresh clean air. The tour focuses on the local history, lore, and fauna. The route passes closely to the Pacific Ocean and overlooks stunning Silver Bay. You will also hike to Thimbleberry Lake, crossing an impressive waterfall and enjoy Whale Park (via steep stairways). Expect a gently rolling four-mile ride and one mile of hiking.

Please note: All riders are required to wear a provided helmet. Wear



comfortable clothes and shoes. Storage is provided for items not needed for the tour. Rain gear, pants and jackets are provided when needed; tour operates rain or shine. Minimum height is 4'10" and minimum age is 10 years. A snack will be provided. This is a non-smoking tour.

Advanced Mountain Bike Tour



Approximately 4 hours • \$\$

This tour is designed for the physically fit and experienced mountain biker—it's a challenging ride! Start from downtown Sitka and parallel the coast during the majority of the ride. On



the way, you'll stop at Whale Park for a breathtaking view of Silver Bay and at the old Alaska Pulp Mill site, you'll turn off for the climb to Blue Lake. The ride is strenuous and gains approximately 500 feet of elevation as you pass tumbling waterfalls, but there are stunning views at the top. Take in hanging gardens, waterfalls, a deep blue lake and awesome mountain scenes. If weather, road or bear conditions do

not permit the ride up to Blue Lake, the tour will continue past the mill site for six miles along Silver Bay to the Metavichi Fish Hatchery, which also offers an incredible view with great photo opportunities. Water and lunch are included. Mountain bikes with front shocks are provided. Ride will operate rain or shine.

Please note: Minimum height is 4'10" and minimum age is 15 years. Participants must be familiar with a 21-speed bike with grip or trigger shifting. All riders must wear a helmet, which is provided. A short optional hike may be included if time permits.

Half-Day Salmon Sportfishing



Approximately 4 hours • \$\$\$

Sitka Sportfishing is one of Southeast Alaska's best-kept secrets. Sitka Sound offers an abundant supply of king, silver, chum and pink salmon. Combine this with dramatic views and opportunities to see marine wildlife, and you have an exciting excursion to

experience. Your Captain is a Coast Guard-licensed, experienced fisherman. All equipment, tackle, bait and rain gear are provided. Dress warmly and wear rubber-soled shoes or boots. Your catch can be processed locally and shipped home at an additional charge (U.S. destinations only, credit card payment accepted).

Please note: Alaska State law requires a valid 1-day fishing license, which may be purchased for us\$20 cash from your fishing boat captain along with a us\$10 cash king salmon stamp (during king season May-June). Trolling involves using a downrigger to lower the bait to a specific depth. There are two downriggers, so up to four rods may be fished at once, allowing for fishing at different depths. Fishermen are rotated (instead of assigning rods) so everyone has a fair chance to catch a fish. The rotation order is determined by lottery. The captain may elect to use only two rods if the fish are plentiful. Maximum of 6 guests. Please see fishing information on page 10.

All-Day Salmon & Halibut Fishing



Approximately 7½ - 8 hours • \$\$\$\$

Join us for a full day of Alaska-style ocean sportfishing. Sitka enjoys an excellent catch rate for salmon and halibut. Depending on the season you will pursue king, silver or chum salmon and halibut. You will fish with a maximum of six guests.

Salmon fishing is done by "trolling" with downriggers or anchoring and "mooching." Halibut fishing is done by anchoring and jigging. Halibut fishing can be weather dependent and there is a motion sickness advisory on this tour. Fishing the open ocean can be subject to ocean swell and wind chop. Your captain will



do his best to fish both species, salmon and halibut, but on a small percentage of days, the halibut grounds are too rough to fish. In that event, the focus will be salmon.

Please note: Alaska State law requires a valid 1-day fishing license, which may be purchased for us\$20 cash from your fishing boat captain along with a us\$10 cash king salmon stamp (during king season May-June). Trolling involves using a downrigger to lower

the bait to a specific depth. There are two downriggers, so up to four rods may be fished at once, allowing for fishing at different depths. Fishermen are rotated (instead of assigning rods) so that everyone has a fair chance to catch a fish. The rotation order is determined by lottery. The captain may elect to use only two rods if the fish are plentiful. Lunch, snacks, soft drinks and water are provided. Please see fishing information on page 10.

Sitka Photography Tour



Approximately 3 hours • \$\$

This tour is for photographers, both serious and aspiring, who wish to photograph parts of Sitka rarely seen by visitors. Join an experienced Southeast Alaska photographer for a three-hour customized Sitka photography tour. Possible sights include wildflowers, berry bushes, alpine forest regions, and salmon spawning



streams in season. Other viewing opportunities may include tide-pools, boat harbors, muskegs, estuaries, beaches, small lakes, eagles' nests, and more. Together, guests and guide will determine photography locations according to weather, season, and group interest. Explore the Tongass National Forest, the largest temperate rain forest in the world, where you can expect to learn about the flora, fauna, and history of the Tongass. A chocolate bar is provided. Transportation is by private van. This tour goes rain or shine and is non-smoking. Depending on the locations to be visited, some access to alpine and other areas may require exertion. Guests should prepare themselves and their equipment for inclement weather.

Please note: Minimum age is 12 years. This tour is designed to take you to spectacular scenic areas for photographic opportunities. It is not a lesson in photography or in how to use your camera.



Skagway, Alaska

The tours in this section operate when the ship is in Skagway. Guests whose cruise itinerary does not include a port-of-call in Skagway, but includes the port of Haines, please see page 25 for Skagway tours departing from Haines.



FLIGHTSEEING

Glacier Discovery by Helicopter (with Landing)



Approximately 2 hours • \$\$\$\$

Approximately 40-minute flight; 40 minutes on glacier

Leave all trace of civilization behind and experience the infinite beauty of Alaska's remote glaciers. Lift off from the historic Skagway waterfront and head into a rugged region of sheer mountains, majestic valleys and massive glaciers. Jagged peaks towering over the Chilkat Glacier, cascading waterfalls, surrounding the Ferebee Glacier, or the spectacular "river of ice" known as the Meade Glacier, may be among the wonders you encounter. Flight routes and landing zones are selected daily to ensure that you receive the best that the area has to offer. Once you have reached your destination, you will be given the rare opportunity to explore one of Mother Nature's greatest marvels. Enjoy the walking tour of a lifetime as your glacier guides answer all of your questions and explain the awesome forces at work.

Please note: Guests weighing 250 lbs or more will pay an additional



surcharge over the published fare. Time spent on the glacier is approximate and may vary due to weather and glacial conditions. Glacier boots are provided. See flightseeing information on page 11.

Dog Sledding & Glacier Helicopter Flightseeing



Approximately 2 hours • \$\$\$\$

Approximately 30-minute flight; approximately 1 hour at dog camp

Combine your helicopter flightseeing tour with the experience of dog sledding! After flying over spectacular glacier sites, you will land at a dog camp situated atop a majestic glacier above



Skagway. Experienced guides will introduce you to the world of dog sledding. The young and young at heart will have the opportunity to either stand on the sled and mush or relax on the sled and observe the breathtaking environment. Meet the professional mushers and friendly dogs that have made the Iditarod dog race famous.

Please note: Warm clothing and sunglasses are recommended. Glacier boots are provided. Guests weighing 250 lbs or more will pay an additional surcharge over the published fare. Time spent on the glacier is approximate and may vary due to weather and glacial conditions. See flightseeing information on page 11.

Heli-Hike & White Pass Rail Adventure



Approximately 5 hours • \$\$\$\$

Combine a scenic helicopter flight and a ride aboard the historic narrow-gauge White Pass & Yukon Route Railroad with a wilderness hike in the Tongass National Forest—a perfect mix of exercise and breathtaking scenery. First, board a helicopter for the flight over the Juneau Icefield on your way to Glacier Station. Set out on a 4- to 5-mile hike along the remote upper Skagway River and through pristine old-growth, coastal, temperate rain forest to view the magnificent Laughton Glacier with its hanging 4,000-vertical-foot icefalls. Your guide provides information about the region's unique natural history, plants and animals

throughout the hike, allowing plenty of time for wildlife viewing and photographs. Bears, mountain goats, moose and more call the Laughton Valley home. Returning to Glacier Station, board the White Pass & Yukon Route Railroad for the 14.1-mile scenic ride back to Skagway, while enjoying a snack of backcountry delights en route.



Please note: Participants should be in good physical condition; this is a wilderness hike over uneven and sometimes difficult terrain. Wear a lightweight, long-sleeved shirt and/or sweater and shoes with ankle support. Rain jacket, gloves, day-pack with water and candy bar are provided. The tour does not cross the US/Canadian border; however, the train itself crosses the border prior to the tour. Therefore, you must bring the following identification with you: US & Canadian citizens must carry a passport, or valid driver's license and birth certificate, and carry their ship ID. All other nationalities must have a valid passport, visa and ship ID. Minimum age is 9 years. Elevation gain for the hike portion is 300 feet. Guests weighing 250 lbs or more will pay an additional surcharge over the published fare. See flightseeing information on page 11.

Glacier Country Flightseeing



Approximately 1½ hours • \$\$\$

Approximately 60-minute flight

Take to the air departing from the Skagway Airport for spectacular views of the incredible glaciers of the northern Inside Passage. Immerse yourself in a wilderness experience of pure glacial grandeur and amazement. Your pilot will whisk you away in the comfort of a Twin Otter as you fly over truly breathtaking scenery in the Skagway and Haines area, including Glacier Bay (weather permitting) as it was meant to be seen. Your pilot will choose the best flight route depending on current weather and glacier conditions for a spectacular adventure over the most scenic glacier areas. From tidewater to hanging glaciers, some of

the area's most dramatic sights are along the same routes first explored by John Muir more than one hundred years ago. Survey this unforgettable landscape and marvel at the power of nature as it continually reshapes the mountains and valleys below. Examine glacial dynamics as seen only from the air and watch rivers of ice as they carve their way through monumental bedrock. Your flight is fully narrated with music, and you will enjoy learning about the history and geography of the area through your headset. Large windows and a route guide aids in identifying the stunning sights along the way, making this flight one you will never forget. You will agree that glaciers are a sparkling jewel among the sights that crown any visit to Alaska.



SIGHTSEEING

Best of Skagway!



Approximately 6½ hours • \$\$\$

Ascend into the beautiful mountains on the White Pass & Yukon Route Railroad. From a replica or restored rail car you will see incredible scenery as your tour guide shares the history of the Klondike Gold Rush. In Fraser, British Columbia, embark a deluxe motor coach to travel the spectacular Klondike Highway taking in the sights of Tormented Valley and Pitchfork Falls along the way. At the foot of the pass, next to a waterfall is Liarville Gold Rush Trail Camp and Salmon Bake. A cast of sourdoughs and dancehall girls will entertain you with a hilarious melodrama and poetry by Robert Service, and teach you the art of gold panning! Then, you will be set free in the Liarville gold area, where you are guaranteed to find that precious metal! Head for a barbecue of freshly grilled wild Alaskan salmon, baked chicken, rice pilaf, baked beans, a variety of salads, cornbread, coffee, lemonade and dessert. After lunch, wander over to the camp and enjoy the waterfall and sights of Liarville and



have your picture taken with one of the dance hall girls or a lovable freight husky. Finally, you will visit the world-famous Red Onion Saloon and brothel in historic Skagway. The Red Onion's Madams will fill your glass with Alaskan Amber beer, wine, or root beer as you are entertained by tales of the girls who used to work in these historic rooms! See the priceless silver dress worn by the Onion's first Madam, and many other original artifacts left by the "soiled doves."

Please note: Minimum age is 16 years. The brothel museum is not wheelchair accessible. As this adventure crosses the US/ Canadian border, you must bring the following identification with you: US & Canadian citizens must carry a passport, or valid driver's license and birth certificate, and carry their ship ID. All other nationalities must have a valid passport, visa and ship ID.

Salmon Bake & Gold Panning Camp



Approximately 2½ hours • \$\$

For a dining experience you'll never forget, board a motor coach for a trip to the Liarville Gold Rush Trail Camp, located on the outskirts of Skagway. Your meal is prepared over an open wood fire using recipes handed down by the women who cooked in the camps and goldfields of 1898. Sit down for a freshly grilled fillet of wild Alaskan salmon, baked chicken, rice pilaf, baked beans, a variety of salads, cornbread, coffee, lemonade and dessert. After your meal, gather at the Liarville Hippodrome where a cast of sourdoughs and dancehall girls will dazzle you with melodrama, recite Robert Service poetry and teach you the art of gold panning. You are guaranteed to find gold in every pan! Once you've made your fortune, take time to wander through the camp and visit the general store, saloon, bordello and laundry tents to view the antiques and vintage clothing left behind by the miners and the ladies of the evening. Have your picture taken with one of the dancehall girls or the camp mascot—a lovable freight husky!

Please note: The trail camp is wheelchair accessible with assistance.



White Pass Rail, Klondike Highway & Gold Camp Adventure



Approximately 4½ hours • \$\$\$

Experience an unforgettable journey along the eastern side of White Pass aboard the world famous narrow gauge White Pass & Yukon Route Railroad, built more than 100 years ago through



some of the North's most rugged terrain. Board a comfortable, old-fashioned rail car and retrace the original route beyond the summit of White Pass at 2,865 feet through breathtaking scenery. Upon reaching Fraser, British Columbia, you will board a motor coach for the journey down the west side of the White Pass canyon as you hear about Tormented Valley and Pitchfork

Falls. Then, stop at historic Liarsville, a gold rush trail camp, to view cabins and tents once used as a bakery, laundry, saloon and bordello. Try your hand at gold panning—you're guaranteed to find some! Enjoy a snack and have your photo taken with a husky, or do some shopping before returning to Skagway.

Please note: As this adventure crosses the US/Canadian border, you must bring the following identification with you: US & Canadian citizens must carry a passport, or valid driver's license and birth certificate, and carry their ship ID. All other nationalities must have a valid passport, visa and ship ID.

White Pass Summit Scenic Railway



Approximately 2½ - 3½ hours • \$\$

Take an unforgettable round-trip journey aboard the White Pass & Yukon Route Railroad. Against all odds, this iron trail was built through some of the North's most ruggedly beautiful terrain and 100 years later is still in operation. Ride in a comfortable, restored or replica car to the summit of the White Pass, through two tunnels, over sky-high trestles, and remote valleys. Pass Bridal Veil Falls, Inspiration Point and Dead Horse Gulch as



your guide announces all points of interest and tell the story of the Klondike Gold Rush. Reaching the White Pass Summit at 2,865 feet, a seat exchange will occur, allowing everyone to experience the excellent views during this round trip rail journey. This narrow-gauge railroad is an international historic Civil Engineering



Landmark. It shares this honor with the Panama Canal, the Eiffel Tower and the Statue of Liberty, and is truly a World Wonder.

Please note: The train is wheelchair accessible. Restrooms are located on each train car. Food is not available for purchase on the train. You will not get off the train during the tour. The 4:30pm departure is a shorter duration due to fewer trains on the pass. The same distance is traveled, just in less time.

Ultimate Yukon & White Pass Railroad



Approximately 8 hours • \$\$\$

You've traveled so far already; it's time to make the 65-mile journey into the Yukon! Climb aboard a deluxe motor coach and experience the magic and the mystery of the famed Yukon Territory via the South Klondike Highway which leads to the top of the White Pass—3,292 feet above sea level. Majestic peaks, waterfalls, and glaciers can all be seen on this incredible drive. Leaving White Pass and the USA behind, you'll enter Canada and the unspoiled and untamed beauty of the Yukon Territory. Marvel at the chain of lakes that form the headwaters of the Yukon River, explore the rustic town of Caribou Crossing (Carcross), snap a quick photo of the "world's smallest desert," and enjoy the tales of the Klondike Gold rush throughout your journey. At Caribou Crossing, you will be treated to a delicious chicken barbecue lunch complete with homemade donuts. After your meal, explore the indigenous wildlife museum and scan the hills for Dall sheep and bears. Back in Fraser, British Columbia,

you'll board the White Pass and Yukon Route Railroad for a truly unforgettable ride down this historic and breathtaking narrow-gauge railroad.

Please note: As this adventure crosses the US/Canadian border, you must bring the following identification with you: US & Canadian citizens must carry a passport, or valid driver's license and birth certificate, and carry their ship ID. All other nationalities must have a valid passport, visa and ship ID.

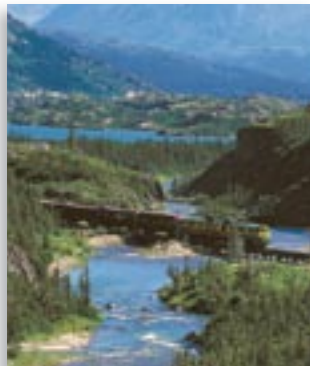
White Pass Summit Club



Approximately 2½ hours • \$\$

Imagine coming to Alaska on an exclusive cruise ship 100 years ago to take one of the most adventuresome excursions of the time—traveling Skagway's White Pass & Yukon Route—the “Scenic Railway of the World.” Today, you will go first class all the way, with a champagne toast at the Summit served by a personal attendant. You will receive a brass ornament of certification, certifying your entry into one of the most elite clubs in Alaska, the “White Pass Summit Club.” During this 2½-hour excursion, you will be given a full commentary of the history of the Klondike Gold Rush and describe how this railroad became an International Historic Civil Engineering Landmark. Experience the breathtaking panorama of mountains, glaciers, gorges, waterfalls, tunnels, trestles and historic sites from the comfort of restored or vintage rail cars—all with a touch of class.

Please note: The train is wheelchair accessible. Restrooms are located on each train car. Food is not available for purchase on the train. You will not get off the train during the tour.



time—traveling Skagway's White Pass & Yukon Route—the “Scenic Railway of the World.” Today, you will go first class all the way, with a champagne toast at the Summit served by a personal attendant. You will receive a brass ornament of certification, certifying your entry into one of the most elite clubs in Alaska,

the “White Pass Summit Club.” During this 2½-hour excursion, you will be given a full commentary of the history of the Klondike Gold Rush and describe how this railroad became an International Historic Civil Engineering Landmark. Experience the breathtaking panorama of mountains, glaciers, gorges, waterfalls, tunnels, trestles and historic sites from the comfort of restored or vintage rail cars—all with a touch of class.

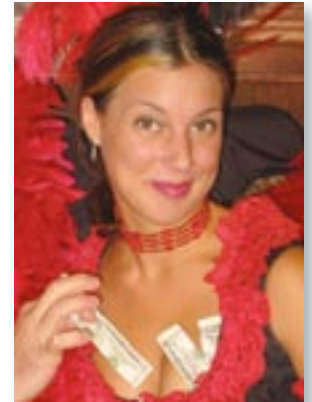
Please note: The train is wheelchair accessible. Restrooms are located on each train car. Food is not available for purchase on the train. You will not get off the train during the tour.

Ghosts & Goodtime Girls Historical Walking Tour



Approximately 2 hours • \$

Step back in time with one of the sensational madams of the Red Onion Saloon. Lavishly costumed and highly entertaining, she will guide you through the streets and back alleys of Skagway, where women of the evening rubbed shoulders with notorious characters such as Soapy Smith and Skookum Jim. Stories of Klondike Kate, Oregon Mare, Pea Hull Annie and Diamond Lil depict the lusty, adventurous, and sometimes tragic lives of thousands of women who stampeded north. You will pass historic 1898 buildings as you learn of Skagway's rich history. Your experience culminates with a stop at the world famous Red Onion Saloon's restored brothel museum. Here, join in a champagne toast and explore the halls and bedrooms of this celebrated brothel, observing original relics and images of the ladies who worked there. If you're lucky, you might even catch a glimpse of the resident ghost, Lydia!



Please note: Minimum age is 16 years. The brothel museum is not wheelchair accessible.

A Taste of Skagway at Jewell Gardens



Approximately 2½ hours • \$\$

Get ready to be inspired as you visit the famous Jewell Gardens to explore the grounds and taste some of their wonderful garden recipes along with Alaskan wines. Your



motor coach will drop you at the door of one of the most beautiful gardens in all of Alaska. Stroll through this unique northern show garden as your knowledgeable guide shows you the unusual varieties grown in Alaska and just how quickly flowers and vegetables can mature to enormous proportions in “the land of the midnight sun.” You will be harvesting items from the garden to use in the kitchen. After touring the garden, it’s on to a cooking demonstration using fresh, organic ingredients from the garden. Sip Alaska-made wine as you discover just how easy it is to cook from the garden as the chef demonstrates recipes for garden-fresh herb scones, a rhubarb treat and a seasonal soup. Taste what is made, and learn how to add color and flavor with edible flowers. The goal is to inspire both the gardener and the cook in you!

Skagway Street Car



Approximately 2 hours • \$

Take a seat aboard a beautiful, yellow, 1927 sightseeing motorcar and travel with a costumed conductor around the waterfront, along the boardwalks of downtown’s Historic District, and up to the scenic overlook for a panoramic view of the town, the ship, and surrounding glaciers and peaks. Hear the inside story about Skagway’s geography and harsh winters. Explore the Gold Rush Cemetery, and have your camera ready for a recounting of the famous Soapy Smith gunfight. Motor through the residential neighborhoods of Skagway, the “Garden City of Alaska,” then follow in the footsteps of Presidents Warren G. Harding and Teddy Roosevelt by becoming an honorary member of the Arctic



Brotherhood, and watching a command performance at the Club House Theater. You will see *The Skagway Story* highlighting the history of this gold rush town and the pioneer families that built it. All aboard the Skagway Street Car!

Soapy Smith & the Dangerous Days of '98



Approximately 2½ hours • \$

During the Klondike Gold Rush of 1898, Skagway was home to the largest criminal gang in North America, led by Soapy Smith. Step into the shoes of a gold-crazed stampeder and relive the exciting days of saloons and dancehalls, of shoot-outs, and of floozies and Can Can girls. You’ll witness the final events leading up to the demise and dramatic death of the villain that Skagway loves to hate. Travel through the Historic District and stop at the Historic Eagles Hall for the *Days of '98 Show* of song, dance, love, rejection, comedy and drama, which truly brings Skagway’s colorful history to life. Head out to the Gold Rush Cemetery and visit the graves of Soapy Smith and the man who killed him. Examine the City Museum’s collection of unusual artifacts—hard evidence of the stories you’ll see and hear on tour. You can stay in town and take the complimentary City Shuttle back to the ship later, or transfer directly from the museum to the ship.

Experience the Yukon & Suspension Bridge



Approximately 7½ hours • \$\$\$

You’ve traveled so far already, it’s easy to make the 65-mile journey into the Yukon Territory! Climb aboard a deluxe motor coach and experience the magic and the mystery of the famed Yukon. Your adventure begins with a climb on the South Klondike Highway to the top of the White Pass, 3,292 feet above sea level. Majestic peaks, waterfalls, and glaciers line the way on this incredible drive. Leaving the White Pass and the USA behind, you’ll enter Canada. Enjoy the unspoiled and untamed beauty en route to the Yukon Suspension Bridge. This is the country that you’ve heard about—pristine air, wild berries in season, the roar of raging white water. Thrill to the sensations of a swaying walkway more than 60 feet above the rapids. Lively graphic panels and displays will explain the land and the wildlife. Interpreters from the Tagish First Nation will be on hand to tell



stories, demonstrate local crafts and answer questions. Then, marvel at the chain of lakes that form the headwaters of the Yukon River and explore the rustic town of

Caribou Crossing (Carcross), snap a quick photo of “the world’s smallest desert,” and enjoy the tales of the Klondike Gold Rush told by your guide throughout your journey. While at Caribou Crossing you will be treated to a delicious chicken barbecue lunch, complete with grandma’s famous homemade donuts. After your meal, you’ll want to tour the Yukon’s most complete museum exhibit of local wildlife including an Ice Age woolly mammoth. From Carcross, continue by motor coach down the west side of the White Pass canyon. You’ll see picturesque points such as Tormented Valley and Pitchfork Falls. Back in Skagway, your coach will make a stop at the Skagway Sculpture Park, featuring 27 bronze sculptures including a life size Alaskan grizzly bear and a 1.6-scale horse (a tribute to Dead Horse Gulch) and the three-ton Dream Chaser. This 11-foot-wide, 30-foot-long, and 20-foot-tall Austin Deuel sculpture magnificently depicts one prospector’s courageous journey into the Klondike Gold Fields. Browse in the historic town of Skagway on your own or take the transportation provided back to the ship.

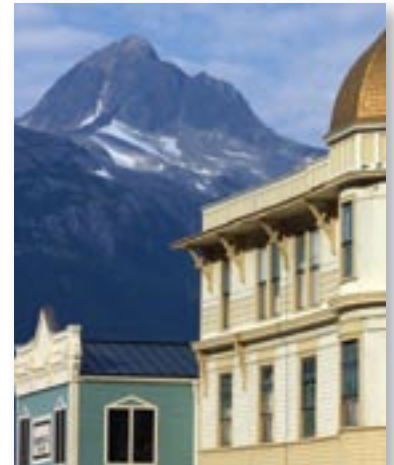
Please note: As this adventure crosses the US/Canadian border, you must bring the following identification with you: US & Canadian citizens must carry a passport, or valid driver’s license and birth certificate, and carry their ship ID. All other nationalities must have a valid passport, visa and ship ID.

Evening Gold Rush Tour & Salmon Bake



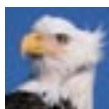
Approximately 2½ hours • \$\$

For a dining experience you’ll never forget, board a motor coach for a trip to the Liarsville Gold Rush Trail Camp, located on the outskirts of Skagway. Your meal is prepared over an open wood-fire using recipes handed down by the women who cooked in the camps and goldfields of 1898. Sit down for a freshly grilled fillet of Alaskan salmon, served with baked beans, potatoes, coleslaw, sourdough rolls, coffee, lemonade, and for dessert, hot apple strudel. After your meal, gather at the Liarsville Hippodrome where a cast of sourdoughs and dancehall girls will



dazzle you with melodrama, recite Robert Service poetry and teach you the art of gold panning. You are guaranteed to find gold in every pan! Once you’ve made your fortune, take time to wander through the camp and visit the general store, saloon, bordello and laundry tents to view the antiques and vintage clothing left behind by the miners and the ladies of the evening. Be sure to have your picture taken with one of the dancehall girls or the camp mascot—a lovable freight husky. From the vantage-point of Skagway’s scenic overlook, photograph the valley below and the tiny town that once teemed with more than 15,000 men and women, 80 saloons and just as many gambling houses and dancehalls. This behind-the-scenes tour brings to life an era of great glamor and intrigue.

Please note: The trail camp is wheelchair accessible with assistance.



ADVENTURE

Musher's Camp & Sled Dog Experience



Approximately 2¼ hours • \$\$

Get a glimpse of a truly northern pastime and learn about the life of sled dogs and their musher. You will see these powerful dogs in action as they pull you through the backcountry of a historic Gold Rush site. During your van ride out of Skagway, your guide



will acquaint you to the area's Gold Rush history and the present-day community. Arriving at the dog camp, you will meet the dogs and climb on to a wheeled sled that

has been custom made for running during the snowless summer months. The husky team will whisk you along a one-mile wooded trail through some of the Southeast Alaska's temperate rain forest. Spruce and hemlock trees, thick spagnum moss, glacially fed waterfalls and views of the Taiya Inlet tidal flats surround you on this unique excursion. There will be time to cuddle husky puppies and take a guided walk through the musher's camp as you learn about the equipment, hard work, and the physical strength that goes into the life of dog sledding in the wild, rugged North.

Please note: Each land sled seats six people. This tour is not conducted on snow.

Yukon Jeep® Adventure



Approximately 5 hours • \$\$\$

Travel the route of the Trail of '98 into the Yukon Territory behind the wheel of a four-wheel-drive Jeep Wrangler®. Groups of four will be combined to drive your Jeep® into the heart of the fabled gold rush legends of Robert Service. Your guide will entertain you with the lore of the gold rush era by interactive radio system. Amazing vistas accessible only by off-road vehicle await!

View Pitchfork Falls, Moore Bridge, Dead Horse Gulch, Bracket Wagon Trail, and Tormented Valley en route to the historic village of Carcross, named after the narrow caribou crossing at the headwaters of the mighty Yukon River. There are several points along this 140-mile adventure to switch drivers. Bring your camera on this fun drive into Gold Rush country!



Please note: As this adventure crosses the US/Canadian border, you must bring the following identification with you: US & Canadian citizens must carry a passport, or valid driver's license and birth certificate, and carry their ship ID. All other nationalities must have a valid passport, visa and ship ID. Drivers must be at least 25 years old, are required to show a valid driver's license, and must sign a liability waiver. Canadian residents may not drive the vehicles into Canada due to current regulations. Operates in all weather conditions. Comfortable attire is recommended. The majority of this tour is driven on paved roads and highways.

Chilkoot Trail Hike & River Float



Approximately 4¼ hours • \$\$

Hike the Chilkoot Trail—a tranquil place of incredible beauty with lush rain forest, streams teeming with spawning salmon (in season) and birds, animals, wild flowers and edible berries. An easy pace allows plenty of photo stops. The trail brings you to the banks of the Taiya River, where your 35-minute float trip (with no whitewater) begins. The ride culminates at the tidal estuary where the forest gives way to fields of beach greens and wild iris. The granite walls of the



ford rise up steeply, becoming snow-capped peaks serrated by hanging glaciers. Enjoy a riverside snack before returning to your ship.

Please note: This float trip has no white water. Guests must be in good health and able to hike approximately 1.6 miles over uneven terrain with an elevation gain of about 700 feet. Bring a warm jacket, comfortable walking shoes, hat, and gloves. Minimum age is 7 years.

Klondike Rock Climbing & Rappeling Adventure



Approximately 3¼ hours • \$\$

Join professional mountain guides for an exciting climbing adventure on the smooth granite walls of fabulously scenic White Pass. From the Klondike Highway, you'll hike for a few minutes



to the base of majestic rock cliffs, and don rock climbing shoes, helmet and harness. After a climbing introduction from the guides, you'll rope up and start climbing the clean granite. There are more than a dozen routes from which to choose—some very easy, and others offering more of a challenge, but each ends with a stunning view of the

Skagway River, the White Pass & Yukon Route Railway, and the surrounding wilderness. Additionally, you can experience rappeling down the high cliffs. This adventure is perfect for those looking for a first climbing experience, or for experienced climbers. None of the climbing is mandatory, and everyone will enjoy the cliffside snack and stunning views.

Please note: Participants need to be able to hike for a few minutes over uneven terrain, and should dress in warm clothing that allows for good flexibility. Minimum age is 8 years. Climbing shoes, helmet and harness are provided.

White Pass Train & Bike



Approximately 4¼ hours • \$\$\$

For the active adventure seeker, this tour begins with a spectacular narrow-gauge train ride up to scenic White Pass, at an elevation of 2,865 feet. Along the way you'll marvel not only at this engineering masterpiece, but also at the rugged and beautiful scenery. At Fraser, British Columbia, a van driver will take you up the Klondike Highway to the 3,292-foot Klondike Summit. Here your guide will familiarize you with the bikes, equipment and safety gear. Then it's down, down, down! Your guides will keep the group at a safe pace as you wind your way from above the tree line down into the lush rain forest of Southeast Alaska. You'll stop at waterfalls and spectacular overlooks before heading back to your ship. A couple of short rises along the highway will require some effort to climb.

Please note: As this adventure crosses the US/Canadian border, you must bring the following identification with you: US & Canadian citizens must carry a passport, or valid driver's license and birth certificate, and carry their ship ID. All other nationalities must have a valid passport, visa and ship ID. Minimum age is 16 years. Minimum height is 4' 8". Must be physically fit and active.

Glacier Lake Kayak & White Pass Rail Experience



Approximately 5 hours • \$\$\$

Ride the historic White Pass & Yukon Route Railroad and explore the crystal clear waters of a glacially-carved lake by kayak. Your adventure begins aboard the "Scenic Railway of the World," whose route was carved out of the rugged Coastal Mountains. This ride is truly unforgettable, complete with stunning views of waterfalls, trestles, mountains, glaciers and the



original Trail of '98. Experience the beauty of the wilds of northern British Columbia at the White Pass Summit before disembarking at Lake Bernard. The kayaking begins with a "gear grab" and instruction in the use of stable, state-of-the-art, two-person kayaks. Paddle across the cold, pristine waters that stamperders plied more than 100 years ago in search of gold and riches in the Yukon. Enjoy unobstructed views of snow capped mountains that rise in all directions. Your experienced and knowledgeable professional guide thrills you with tales of the gold rush, natural history, flora, and fauna. Watch for bear, mountain goat, caribou and eagles amid the alpine terrain of the Tormented Valley. After paddling, enjoy a light snack before boarding a motor coach for your return to Skagway. Your driver provides narration of the history and scenery of the route down the Klondike Highway.

Please note: As this adventure crosses the US/Canadian border, you must bring the following identification with you: US & Canadian citizens must carry a passport, or valid driver's license and birth certificate, and carry their ship ID. All other nationalities must have a valid passport, visa and ship ID.

Yukon Saddle & Paddle: A Horseback & Canoe Adventure



Approximately 6½ hours • \$\$\$

Experience the beauty of Canada's Yukon Territory by highway, horseback, and canoe. With your mountain guide at the wheel, your mini-bus climbs the Klondike Highway, following the White Pass Trail of '98. You'll view pretty waterfalls, glaciers, and peaks that adorn this famous thoroughfare. Crossing the summit,



you'll follow a string of jewel-like lakes into Canada's Yukon Territory. Saddle up at the corral for a guided trail ride to the edge of the Watson River to see the remnants of mining days. Back at the lodge, meet the Dutch family that has made their home here in the Yukon, and enjoy a hearty meal complete with your host's famous apple pie! Then it's a short stroll down to the

lake where your two-person canoes await for a scenic guided paddle on picturesque Spirit Lake. On your return, stay in downtown Skagway for shopping, or return to your ship with plenty of time for other activities.

Please note: As this adventure crosses the US/Canadian border, you must bring the following identification with you: US & Canadian citizens must carry a passport, or valid driver's license and birth certificate, and carry their ship ID. All other nationalities must have a valid passport, visa and ship ID. There is a maximum weight limit of 250 lbs for this excursion. Minimum age is 13 years.

Glacier Point Wilderness Safari



Approximately 5½ hours • \$\$\$

This wilderness safari is a photographer's paradise—an exciting journey through deep fjords, lush rain forests, colorful wildflowers and towering mountains, ultimately taking you face-to-face with the majestic Davidson Glacier. Enjoy the fresh air and exercise; it's an experience you will never forget. Begin with a



spectacular 40-minute catamaran cruise through Alaska's deepest fjord. Watch for whales and sea lions en route to a remote beach landing at Glacier Point. After a short, scenic drive by bus, and a fascinating ¼-mile walk, the forest suddenly opens to a breathtaking view of the glacier. A 31-foot canoe waits for you to paddle yourself along on a voyage of discovery to the face of the glacier.

Please note: Participants must be in good health and able to hike over uneven terrain. Dress warmly; bring a hat and gloves, and wear comfortable walking shoes. Minimum age is 7 years. A box lunch will be provided.

60° N Yukon Golf & Scenic Drive



Approximately 8 hours • \$\$\$

Venture into the Yukon for a far north scenic and sporting adventure. Enjoy a narrated drive through boisterous Skagway and up the Klondike Highway on a route paralleling the fabled White Pass railroad. The unrivaled scenery includes alpine lakes and streams set amid towering mountain peaks. Keep an eye out for some of the region's diverse wildlife. Entering Canada, pass spectacular Emerald Lake and the historic town of Carcross. Note the dramatic change in vegetation as you leave the coastal rain forest and enter the arid interior. A professionally maintained, 9-hole golf course is set at latitude 60 degrees north, surrounded by mountains, lakes and boreal forest. Gear up with clubs and cart, and tee off for a morning of golf. The regulation 36-par course features 6,000 square feet of USGA standard greens. Each hole offers four sets of tees with holes ranging from 70-500 yards ensuring golfing enjoyment for both advanced and beginning players. The layout is both visually intriguing and varied with forest, water hazards and unusual topography for some added fun. The challenging course and the stunning scenery make for a memorable round. Afterwards, enjoy a buffet-style lunch in the charming log clubhouse before you return to Skagway.

Please note: Limited ride-along seats are available to companions who want to enjoy the scenic ride and meal but not golf. Please see the Shore Excursions Office on board for availability. Golf cart, shoes, graphite Spalding clubs, lunch and souvenir golf balls

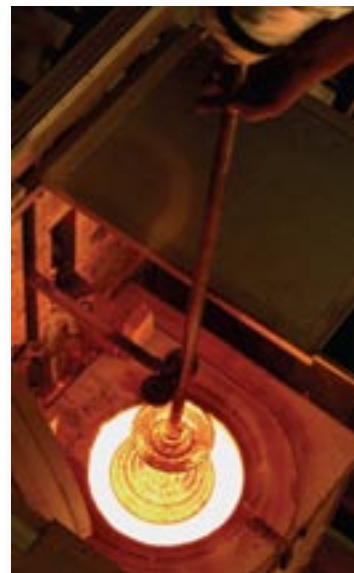
included. As this adventure crosses the US/Canadian border, you must bring the following identification with you: US & Canadian citizens must carry a passport, or valid driver's license and birth certificate, and carry their ship ID. All other nationalities must have a valid passport, visa and ship ID.

Golden Glassblowing Experience



Approximately 3 hours • \$\$\$

This unique hands-on adventure offers a truly unusual opportunity to blow your own glass art in the Last Frontier—complete with real gold in your finished piece. You'll keep the glass you make, and your masterpiece will be shipped, after it cools, to anywhere in the world. From the moment you leave the pier you'll know you're on a very different kind of excursion—this experience has been carefully designed to be an exciting learning adventure on a very personal scale. Upon arrival at the studio, your guide will give you a private orientation tour of the spectacular Northern Show Garden and the Hot Shop where you will learn the ancient art of working with molten glass to create your ultimate Alaskan memento—an ornament for hanging in a window or on your Christmas tree



or to use as a float in your garden pond. You are the designer, so your creation will be entirely unique. Before blowing your piece you will choose your color combinations and whether you want stripes, swirls or spots. In the spirit of the Gold Rush, there's even the chance to incorporate 24 karat gold for a spectacular effect! Following the Hot Shop studio experience you will be treated to a delicious tea service, lunch, or light dinner (depending on the time of day) before returning to your ship.





VISIT HAINES

Add another port to your Alaska cruise itinerary. From Skagway, you can visit Haines—famous for the nearby Chilkat Bald Eagle Preserve and Fort Seward, Alaska’s historic military base. The following tours depart Skagway on a high-speed, 35-minute, fully narrated scenic ferry cruise on the Lynn Canal—a daylight cruise on North America’s longest and deepest fjord—to the town of Haines. After participating in your shore excursion, re-board the ferry for the return trip to Skagway. Your cruise ship will be waiting for your arrival.



ADVENTURE

Haines Eagle Preserve Wildlife River Adventure



Approximately 6½ hours • \$\$\$

Take the fast ferry from Skagway to Haines and experience the world famous Chilkat Bald Eagle Preserve, home of nesting bald eagles and the best moose habitat in the valley with more than 1,500 moose sightings in the 2007 summer season. The Preserve is 48,000 acres of wilderness and today you will access the roadless portion of it in a specially-designed, flat-bottom riverboat, and travel miles of different channels of the Chilkat River. These boats are designed for this silt-laden river and the guide is easily able to hold against the current or turn around to give you the best photo opportunities. The animals are used to human presence, so bring your camera for your wilderness adventure in the heart of the Preserve. You will be surrounded by towering mountains, cascading waterfalls, hanging glaciers and unspoiled wilderness. The boats are uncovered for better wildlife viewing

and photographic opportunities, but extra jackets and large waterproof, windproof lap blankets keep you warm and dry on your adventure.

Join your hosts at their private property, with all amenities such as modern bathroom facilities. Cook your own hot dog over the open barbecue pit or campfire and enjoy your meal in the covered, heated lunch pavilion or sit by the campfire and visit with your fellow adventurers.

Please note: Jackets are provided for inclement weather. Hats and gloves are also provided. Wildlife sightings are likely but are not guaranteed.



Haines Sub-Alpine Mountain Exploration



Approximately 6½ hours • \$\$\$

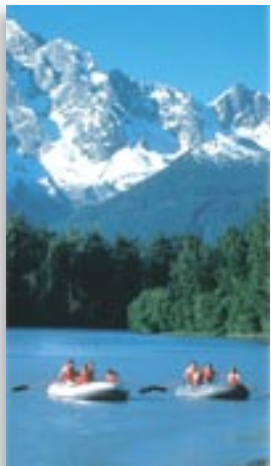
Take the wheel of a four-wheel-drive Kawasaki “Mule” and get ready for an Alaskan wilderness adventure on the Takshanuk Mountain Trail. Your journey begins with a scenic cruise aboard a high-speed catamaran down North America’s longest and deepest fjord to Haines. Your guide will transfer you on a short and scenic ride to the Takshanuk (“land of falling waters”) trail head, and will show you how to operate your automatic transmission, all-wheel-drive Kawasaki Mule, best described as a heavy-duty golf cart. The Mules are equipped with seat belts and offer easy accessibility. This tour allows adventurous guests, as well as semi-ambulatory guests or families with children, to experience the breathtaking views from an unspoiled Alaskan mountain wilderness. Beautiful waterfalls and crystal-clear creeks are just part of the natural scenery you’ll drive through on your way to the panoramic views at the 1,500-foot elevation sub-alpine meadows. On the way down, you’ll stop at an exclusive mountain lodge to enjoy a warm fire, stunning views and a gourmet meal before descending the rest of the trail.

Please note: Four guests or up to five family members can be accommodated per Mule. Restrooms are at the rest stop area. To drive the Mules you must be age 21 or over and must bring a driver’s license.

Haines Eagle Preserve Float Adventure & Lynn Fjord Cruise



Approximately 6½ hours • \$\$\$



Enjoy a spectacular fjord cruise to Haines. Upon arrival, you'll travel to the world famous Chilkat Bald Eagle Preserve, which boasts the world's largest gatherings of bald eagles. It is also home to moose, bears, wolves, and a host of other animals. You'll journey through the Preserve by raft, floating quietly down the river, through the heart of it all. Throughout your adventure you will be surrounded by towering mountains, hanging glaciers, lush forests, and fresh air.

This is an unforgettable adventure into the grandeur of Alaska! Return to Skagway aboard the ferry.

Please note: Minimum age is 7 years. A buffet-style deli lunch will be served during the tour.



Vancouver,
B.C., Canada



SIGHTSEEING

Highlights of Vancouver & Granville Island



Approximately 3½ hours • \$\$

Discover the highlights of Vancouver, a city of mountains, seascapes, forests and unique architecture, including the soaring cedars of Stanley Park, exotic Chinatown and historic Gastown. Your motor coach will proceed directly to Stanley Park, which covers 1,000 acres, of which 800 acres are forested. There will be a short stop at the totem pole collection before you continue past Brockton Point Lighthouse to Prospect Place for a glimpse of the North Shore Mountains, West Vancouver and the Lion's Gate Bridge. Meandering through the park toward English Bay, you will travel through downtown Vancouver to historic Gastown, the city's oldest neighborhood. On your way out of the downtown area, you will pass through the second largest Chinatown in North America. Cross the bridge to Granville Island for some free time to explore the area that was once a mudflat on False Creek inlet, and now boasts three theatres, a hotel, galleries, boutiques, restaurants, marine stores and a brewery.



Please note: This tour is available only to those guests whose cruise does not begin or end in Vancouver.

Stanley Park & Scenic Grouse Mountain



Approximately 4 hours • \$\$

Tour Vancouver's famous Stanley Park to marvel at the 1,000 acres of forest, trails, gardens, restaurants and beaches surrounded by a six-mile sea wall. Stopping in the park at the totem poles,



learn about and photograph these native carvings. Crossing the magnificent Lions Gate Bridge, you will head to Vancouver's North Shore suburban neighborhoods. You will drive to Grouse Mountain, one of Vancouver's most beautiful local mountains, for a gondola ride to the top of the mountain where you can enjoy incredible views of the city and surrounding areas. Returning to Stanley Park, you will stop at Prospect Point to take in the ocean views and the islands in the

distance. Pass English Bay beach and the densely populated West End residential area, and cross the Burrard Street Bridge to drive through the prestigious Shaughnessy neighborhood en route back to the ship.

Please note: This tour is available only to those guests whose cruise does not begin or end in Vancouver.



TRANSFERS

Vancouver City Tour with Airport or Hotel Transfer



Approximately 3½ hours

With/without prepaid transfer voucher – \$\$

For guests departing Vancouver on flights late in the day, this excursion provides an excellent opportunity to visit one of Canada's most beautiful and cosmopolitan cities. View highlights from Vancouver's varied urban scenes, including bustling downtown, historically renovated Gastown district, exotic Chinatown and Stanley Park—nestled near the city center and resplendent with its lush forests, totem poles and scenic promenades. This tour includes Robson Street and Vancouver's business district. Your tour concludes at Vancouver Airport or one of the Holland America Line's Vancouver Hotel Properties (Pan Pacific, Fairmont Waterfront Centre, Fairmont Vancouver Airport).

Please note: This tour is only available to disembarking guests transferring to Vancouver Airport with flights after 4:00pm, or transferring to Holland America Line Vancouver hotel properties.

Motor Coach Transfer to Seattle



Approximately 3¼ hours • \$\$

Transferring to Seatac Airport (flights after 2:00pm only)

As a convenience to interested guests, a motor coach transfer service is available from dockside to SeaTac Airport. While not a sightseeing tour, this transportation also serves the downtown Seattle Sheraton and Fairmont Olympic hotels.

Vancouver Airport Transfer



Approximately 40 minutes • \$

Transferring to Vancouver Airport (flights after 11:15am only)

As a convenience to guests who have not pre-booked an airport transfer, we offer transportation to the airport for guests with flights departing Vancouver on the day of disembarkation.

Victoria, B.C., Canada

Most of Holland America Line's Victoria calls occur in the evening hours—the perfect time to view this city at its most beautiful when its neoclassical and Victorian-era buildings, gardens and quaint streets are all lit up. These tours are specifically designed to operate in both the daytime and evening, with variations as noted.



SIGHTSEEING

Butchart Gardens & Short City Drive (Daytime Calls)



Approximately 3½ hours • \$\$

This tour provides you with the very best of Victoria, combining the city's unique highlights with a visit to the world-famous Butchart Gardens. Take in Chinatown and the Gates of



Harmonious Interest, along with Olde Towne and scenic Marine Drive. At the Butchart Gardens, see how the Butchart family transformed the Gardens from a barren rock quarry to what is now one of the world's best known horticultural attractions, covering more than 55 acres. The Gardens are a lush paradise of flowers, rare trees and winding paths created more than

100 years ago. Enjoy the cascading fountains and foot bridges connecting the many themed gardens, including the beautiful Sunken Garden, the Japanese Garden and the Rose Garden. A map will help you on your self-guided tour.

Please note: This tour operates only during daytime calls in Victoria.

Enchanting Butchart Gardens (Evening Calls)



Approximately 3½ hours • \$\$

As darkness falls, an extraordinary world comes to light at the Butchart Gardens near Victoria. Colored lights provide an interplay of light and shadow, transforming the famous Gardens into a fairyland scented with summer blooms. One of the largest underground wiring installations in North America helps this vibrant wonderland of flowers, rare trees and winding paths to take on an enchanted aspect. The



magnificent Ross Fountain, the centerpiece of these lush gardens, dances with creative lighting effects. Enjoy cascading fountains, footbridges, music and outdoor entertainment while you learn how a barren rock quarry metamorphosed into a world renowned horticultural attraction. On select dates in July and August on Saturday evenings you may be treated to the Butchart Gardens fireworks display, choreographed to music. During early May and September, daylight is limited and this tour is operated predominately in low light with subtly illuminated gardens.

Please note: This tour operates only during evening calls in Victoria.

Victoria Highlights & Craigdarroch Castle



Approximately 2½ hours • \$\$

Discover Victoria's rich history on a tour of this charming Provincial Capital. Driving through the stately downtown core you will see Government Street, the Legislative buildings, and



Chinatown's Gates of Harmonious Interest. See the last remnants of Fort Victoria in Olde Towne together with Bastion Square, the home to the "Hanging Judge." Follow Antique Row to Craigdarroch Castle. This Canadian National Historic Site was built in the 1800s. It is a

39-room, 20,000-square-foot mansion featuring the finest building materials. Marvel at the intricate paneled woodwork, stained-glass windows and Victorian-era furniture. Climb the tower for a superb view of the surrounding areas including the Lieutenant Governor's mansion. Marine Drive leads you back to the ship with vistas of the Olympic Mountains and Strait of Juan de Fuca.

Grand City Drive & Empress High Tea



Approximately 2½ hours • \$\$

This elegant excursion takes in the finest of Victoria's English traditions. Travel through the exclusive Uplands and Oak Bay residential areas with lovely manicured private gardens. Enjoy stunning views along Marine Drive with Mt. Baker and the Gulf Islands as a backdrop. You will stop high atop Mt. Tolmie with vistas of Victoria and its surrounding sea and mountain panoramas. The next stop is the landmark Empress Hotel, where the rich and famous and genuine royalty have enjoyed the Victoria tradition of High Tea at the Empress. Pastries, Devonshire cream, jellies and other fare combine with the Empress Hotel's



own private blend of tea to create the atmosphere of a bygone era. Seated in the Tea Lobby, you will discover the fine dining ambience that embodies all that is Victoria.

During evening calls, the Empress Tea is available exclusively through Holland America Line.

Ale Trail & Pub Tour



Approximately 3¾ hours • \$\$

Victoria is perhaps best known for its flowers and gardens, but it has a secret treasure that few visitors have time to really enjoy—pubs! Some are in the traditional English style; others are truly Canadian.

Three separate pubs and select samples of local brews at each location are included. Enjoy some of the finest brews found in Canada as you tour with

new friends and old! Light appetizers are provided at two of the stops; other food and beverage items may be purchased.

Please note: Minimum age is 19 years.



A Taste of Victoria: City Lights, Wine & Chocolate



Approximately 2½ hours • \$\$

Take an orientation of Victoria, departing from Ogden Point. Your guide will point out the majestic Legislative Building, the Empress Hotel and the picturesque inner harbor. Continue to Chinatown (the oldest in Canada) passing through the Gates of Harmonious Interest and Antique Row, with a wealth of history dating to the gold rush days. Then, you will continue through

scenic farmland to the Church & State Winery. On arrival you will be greeted with a sampling of wine and introduced to the winery. From here you will proceed to the barrel room where you will learn about the wines and hear about the latest taste sensation which involves wine tasting and pairing with chocolate truffles. Enjoy some



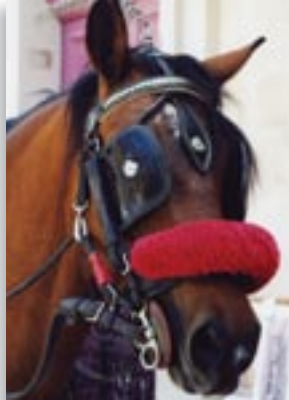
free time browsing the wine/gift shop or simply stroll through the winery at your leisure.

Victoria by Horse-Drawn Trolley



Approximately 1 hour • \$\$

Experience Victoria at the pace of yesteryear. Your horse-drawn trolley awaits, with blankets to keep you warm in the cool evening breeze. The trolley is drawn by two magnificent draught horses dressed in fine harness and the passenger area is covered to provide protection in the unlikely event of a summer shower. Your guided tour heads out from the pier along the Victoria waterfront and then travels through the historic James Bay residential neighborhood. You will wind your way back along the harbor with stunning views of the thousands of lights trimming the Legislative Buildings.



Victoria Highlights



Approximately 2 hours • \$

Discover Victoria's rich history and scenic beauty on a tour of this charming provincial capital. Driving through the stately downtown core you will see Government Street, the Legislative Buildings, Chinatown and the last remnants of Fort Victoria. Follow Antique Row before passing Craigdarroch Castle and the Lieutenant Governor's mansion. The Mt. Tolmie Lookout high above the city offers breathtaking views of downtown Victoria and the surrounding countryside. Come away with lasting memories of this delightfully "British" city.



ADVENTURE

Orca Whale Watching by Day or by Evening

Although sightings can't be guaranteed, these excursions boast a 90% success rate of seeing seals, sea lions, porpoises and numerous species of sea birds, as well as the killer (orca) whales that make their home in these waters. The high-speed Expedition catamaran is the best platform for viewing whales and offers comfort second to none. Experienced naturalists on board use hydrophones so you can hear the whales communicate in their natural environment. See the unique habitat that is also a haven for a myriad of bird life combined with the natural beauty of the Pacific Northwest.

Orca Whale Watching by Day



Approximately 3½ hours • \$\$

Tour Victoria's Inner Harbour and surrounding coastline in an enclosed, high-speed boat, then head for open water to observe the abundant local wildlife as described above.

Orca Whale Watching by Evening



Approximately 3½ hours • \$\$

Evening is often feeding time for the more than 80 resident killer (orca) whales living in these waters. Head for open water to observe the abundant local wildlife as described above.



GUIDES, SERVICES & TRANSPORTATION:

In certain interesting but off-the-beaten-track places, professional guides and vehicles are at a premium. The best available are engaged. For all tours other than the Signature Collection, it is exceptional for drivers of public hire vehicles to speak any language but their own and it is not always possible to obtain air-conditioned buses or taxis in many ports. However, we do our utmost to find the very best excursion packages for your touring pleasure. Guests who leave during a tour for which transportation is included must thereafter provide for their own transportation and services at their own expense. Transportation standards vary from country to country.

SELF-GUIDED EXCURSIONS:

Guests who do not join these prearranged shore excursions must rely on whatever transportation is available in each port. If you choose to devise your own excursion, we suggest that you remind the driver or tour escort of the ship's sailing time. Of course, the ship's facilities are fully available to guests while in port.

CONDITIONS:

Shore excursions are "Non-Holland America Line Services" for the purposes of your Cruise Contract. This means that shore excursions are not owned or operated by Holland America. Refer to your Cruise Contract for a full statement of your rights and obligations as well as those of the Owner of the Ship, Holland America Line Inc. and certain other persons and entities with respect to Non-Holland America Line Services. In particular, please note that you are assuming the entire risk of utilizing Non-Holland America Line Services subject only to whatever terms or arrangements are made by you or on your behalf with the third party furnishing the Non-Holland America Line Services. Holland America does not assume liability for injuries or damages that occur during or as a result of shore excursions, nor is Holland America Line liable for loss of or damage to any baggage or other property which occurs ashore, for any reason whatsoever. Shore excursions are subject to cancellations or changes. Shore excursion operators reserve the right to deny participation to guests based on such criteria as they may establish. Children under 18 must be accompanied by a parent or responsible adult aged 21 or older.

ABOUT PRICING, REFUNDS & CANCELLATIONS:

Rates and descriptions are current as of the printing date. Prices are subject to change without notice and descriptions may vary from the actual tour provided. All cancellations that are made less than 10 days prior to cruise departure are subject to a 10% cancellation fee. There will be no exceptions. In addition, if you cancel your tour reservation after the booking deadline stated in the Shore Excursions Order Form on board, a 100% cancellation fee will apply since transportation and services will have already been arranged.