

► ms Nieuw Amsterdam

we invite you to experience
our newest signature-class ship



Holland America Line

A Signature of Excellence



Digital Workshop



Cabana Club



Queen's Lounge and Culinary Arts Center

> elegance, evolved

We are delighted to launch our newest Signature-class ship, the fourth in Holland America Line's rich history to bear the proud name *Nieuw Amsterdam*.

As such, she carries forward a legacy of glamour and style begun in the '40s when guests such as Katherine Hepburn, Spencer Tracy and Albert Schweitzer sailed aboard the *Nieuw Amsterdam II*. Yet this new ship raises the bar for 21st-century elegance with dozens of innovative amenities.

What's notable: light-filled spaces inspired by global trends in modern design. A variety of specialty restaurants offering cuisine from around the world. Luxe amenities like an upscale jewelry boutique, private poolside cabanas and wellness-oriented Spa staterooms. And a wealth of fascinating options that enable today's discriminating guests to relax, recharge and rediscover life at its best.

TOP (LEFT TO RIGHT)

Digital Workshop, powered by Windows[®], offers informative, free sessions on editing photos, making videos, sharing through your social network and more.

Reserve a private cabana at the Cabana Club or around the Lido Pool and enjoy chilled water and fresh fruit skewers, Evian[®] spray misters, iPods[®] and more.

Attend a hands-on cooking class with our talented chefs in the Culinary Arts Center, presented by *Food & Wine* magazine.

Curtain time: Musical productions starring performers from Broadway shows dazzle audiences in The Showroom at Sea.

Unwind before or after your spa appointment on a heated ceramic lounge chair facing the sea.

RIGHT

Design on board recalls the glamour of New York City, originally a Dutch settlement named Nieuw Amsterdam, as evidenced by the atrium's inverted skyline sculpture.



The Showroom at Sea



Greenhouse Spa & Salon



The Atrium



Pinnacle Bar



Manhattan Dining Room



Pinnacle Grill



Canaletto



Tamarind

> taste the world

What extraordinary dining choices await guests aboard the *Nieuw Amsterdam*! Crisp white table linens and polished silver set the stage for five-course dining drama in the elegant Manhattan Dining Room. Our popular Lido Restaurant offers delicious made-to-order entrées in a casual setting, while flavors of aged Sterling Silver Beef® and premium seafood grace the menu of the intimate Pinnacle Grill.

For inspired Pan-Asian cuisine, discover Tamarind, a dramatic venue at the top of the ship offering sweeping views of the sea. Lunch (complimentary) features tantalizing items such as steamed dim sum and spicy crab Rangoon. For dinner, guests can savor the ceremony of Rijsttafel, a Dutch/Indonesian specialty, or order from a menu of exotic dishes created by Master Chef Rudi Sodamin exclusively for Tamarind.

Canaletto, a casual Italian restaurant, comes to life each evening, featuring pastas, veal Milanese, chicken Marsala, seafood and more in a relaxed setting (complimentary).

Throughout the day, the coffeehouse atmosphere of Explorations Café, powered by *The New York Times*, is perfect for pastries or espresso drinks.

Slice, a new upscale pizzeria next to the pool, serves gourmet pizza by the slice.

And for lunch or a snack, visit the Terrace Grill, serving delicious burgers, fresh garden wraps and grilled panini.



TOP (LEFT TO RIGHT)

The new Pinnacle Bar, offering an extensive wine menu and innovative cocktails.

Exquisite dining in the Manhattan Dining Room.

The freedom each day to dine As You Wish®

Canaletto, the destination for casual Italian cuisine.

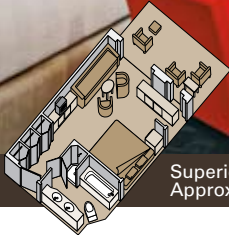
A touch of the exotic: Tamarind, for Pan-Asian cuisine.

OPPOSITE

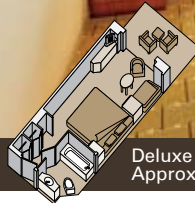
Luxurious appointments characterize the intimate ambiance of the Pinnacle Grill.



Superior Verandah Suite
Approx. 398 sq. ft. with Verandah



Deluxe Verandah Ocean-view
Approx. 254 sq. ft. with Verandah



► spacious staterooms

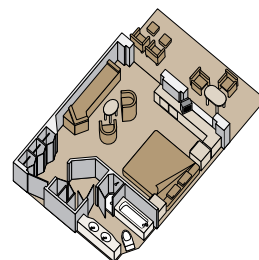
Staterooms and suites aboard will carry an inspired and sophisticated décor, as well as refined amenities such as our plush Euro-Top Mariner's Dream™ beds, finely woven linens, fragrant Elemis bath products and flat-panel TVs. In addition, guests aboard the *Nieuw Amsterdam* can opt for the serenity of a Spa Suite or Stateroom patterned after the latest trends in spa design. Located near the Greenhouse Spa & Salon, each Spa Stateroom or Suite will feature organic cotton bathrobes and slippers, a counter-top water feature, yoga mats, a minibar stocked upon arrival with specialty waters, an iPod® docking station and access to a special Spa concierge for booking treatments throughout your cruise.

In every gracious stateroom

- Spacious, elegantly appointed staterooms, 67 percent with private verandahs
- Our signature Mariner's Dream™ bed featuring plush Sealy® Posturepedic Euro-Top mattress and finely woven cotton linens
- Luxurious bathrobes for use during your voyage
- 100% Egyptian cotton towels
- Premium massage showerhead
- 5x magnifying lighted make-up mirror and salon-quality hair dryer
- Fragrant soaps, lotions, shampoo and other bath amenities from Elemis Aromapure
- Complimentary fresh fruit on request
- Flat-panel TV and DVD player
- Ice service, shoeshine service
- Nightly turndown service with pillow chocolates

Suite accommodations

For guests choosing suite accommodations, Holland America Line offers a host of complimentary services that will forever spoil you for any other stateroom class.

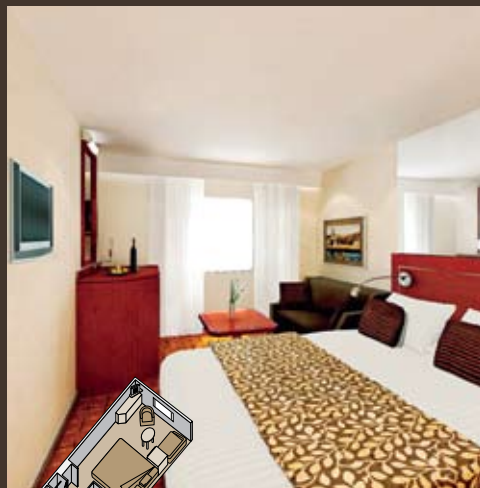


OPPOSITE

Deluxe Verandah Suite
Approx. 510–700 sq. ft.
with Verandah



Deluxe Verandah Ocean-view Spa
Approx. 254 sq. ft. with Verandah



Large Ocean-view
Approx. 185 sq. ft.



Large Interior
Approx. 170–200 sq. ft.



> inaugural season

We invite you to travel to the ends of your imagination. After launching July 2010 in Europe and sailing a summertime series of romantic itineraries to and from Venice, the *ms Nieuw Amsterdam* will embark on her first transatlantic voyage encompassing the enchanting ports that line the Mediterranean en route. Then it's on to the warmth and beauty of the Caribbean in the winter. Come aboard to discover idyllic beaches that rim Eastern Caribbean islands or the Western Caribbean's colorful reefs and Mayan worlds.

ms Nieuw Amsterdam July 2010–April 2011 Sailing Schedule at a Glance

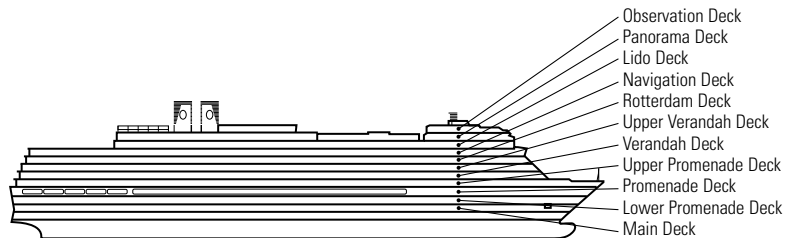
	July	August	September	October	November	December	January	February	March	April	
<i>ms Nieuw Amsterdam</i>	Europe					Caribbean					Europe

Rooms from intimate to grand

With 11 spacious decks, the *ms Nieuw Amsterdam* has plenty of options for relaxation and enrichment.

SHIP SPECIFICATIONS & FACILITIES

- 2,106 Guests
- 86,700 Gross Tons
- 936 Feet Long
- Automatic Stabilizers
- 11 Guest Decks
- 14 Guest Elevators (four are outside elevators)
- 5 Restaurants
- Two Show Lounges
- Outdoor Swimming Pools (one with sliding glass roof)
- Spa & Salon
- Fitness Center
- Suite Lounge
- Duty-free Shops
- Internet Center
- Library
- Casino
- Basketball Court
- Volleyball Court



ROOM CAPACITIES


Public Spaces

Cabana Club	40	Lido Bar	31
Canaletto	64	Lido Restaurant	470
Casino Bar	50	Manhattan Dining Room	1,114
Club HAL	80	Ocean Bar	147
Crow's Nest	165	Piano Bar	65
Explorations Café	113	Pinnacle Bar	36
Explorer's Lounge	47	Pinnacle Grill	112
Explorer's Bar	21	Queen's Lounge & Culinary Arts Center	166

Sea View Bar	163
Silk Den Lounge	50
Tamarind	142
Terrace Grill	46
The Atrium	30
The Northern Lights	46
The Showroom at Sea	890

Meeting Rooms

Half Moon Room	15–25
Hudson Room	40–50
King's Room	35
Stuyvesant Room	20–30
Screening Room	36

 Holland America Line produced this brochure with paper containing 10% post-consumer waste.

SPACIOUS, ELEGANT SHIPS • GRACIOUS, AWARD-WINNING SERVICE • WORLDWIDE ITINERARIES
EXTENSIVE ACTIVITIES AND ENRICHMENT PROGRAMS • SOPHISTICATED FIVE-STAR DINING

Effective November 24, 2009 NA16499 Printed in U.S.A. ©2009 Holland America Line Inc.

 **Holland America Line**
A Signature of Excellence